

SAN DIEGO ZOO





FROM LOS ANGELES



FROM RIVERSIDE



FROM PHOENIX

ALT.



EL CAJON

MIDWAY

ROSE CRANS

BARNETT

FREWAY PACIFIC HWY.

WASHINGTON

UNIVERSITY

HARBOR DRIVE

SAN DIEGO

STATE STREET

SIXTH AVENUE

CABRILLO

BALBOA PARK

PARK BLVD.

PERSHING DR.

30TH STREET

12th AVE

BROADWAY

MARKET STREET

IMPERIAL AVENUE

HARBOR DR.

28th

CORONADO

ORANGE AVE.

FROM Tijuana

PACIFIC OCEAN

STRAND FROM TIJUANA

- ① AIRPORT
- ② CIVIC CENTER
- ③ R.R. STATION
- ④ CHAMBER OF COMMERCE
- ⑤ TOURIST BUREAU
- ⑥ AUTO CLUB
- ⑦ BUS STOP — LINE NO. 7

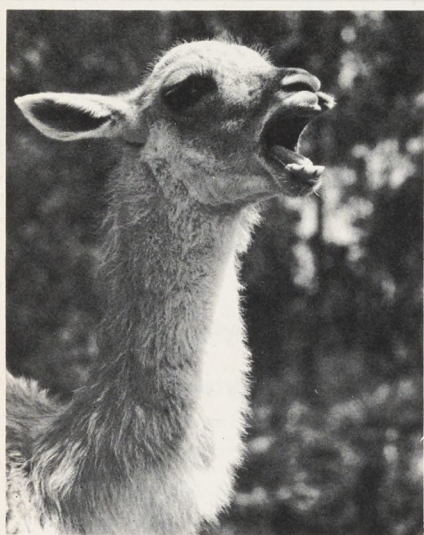
MAIN THOROUGHFARES
AND BUS LINES
LEADING TO
SAN DIEGO ZOO



San Diego Zoo

BALBOA PARK

San Diego, California



DANNY GUANACO SAYS
"WELCOME TO THE ZOO."

OFFICIAL GUIDE BOOK

of the San Diego Zoological Garden, Published by the
Zoological Society of San Diego, Inc.

Box 551

San Diego 12, California



ROCK HYRAX: Closest living relative of the elephant.

Elephants

The elephants are the only living representatives of the order Proboscidea. They are the largest of all land mammals and are represented by two species, one in southern Asia and one in Africa. Formerly, however, they were widespread and occurred not only in Europe but also in North America. Fossil remains have been recovered from southern California deposits. Despite tales to the contrary, the average longevity of elephants is less than that of man. Much longer in proportion is the gestation period which varies from 18 to 22 months. The **Bush Elephant** is the race of African elephant that is represented in our collection. This large rangy beast is native to eastern Africa from Kenya to the Cape. Closely related races inhabit central and western Africa. The African elephant may attain a weight exceeding five tons and a shoulder height of eleven feet. A single tusk from a bull weighed 236 pounds. The African elephant is characterized by its large ears and by the presence of two finger-like processes at the end of the trunk. Cows as well as bulls usually have tusks.

The **Indian Elephant** is native to southeastern Asia, Sumatra and Borneo. This is the species usually seen in circuses and zoos. This species is smaller and less lanky than its African relative, seldom reaching a weight of four tons. At birth it weighs

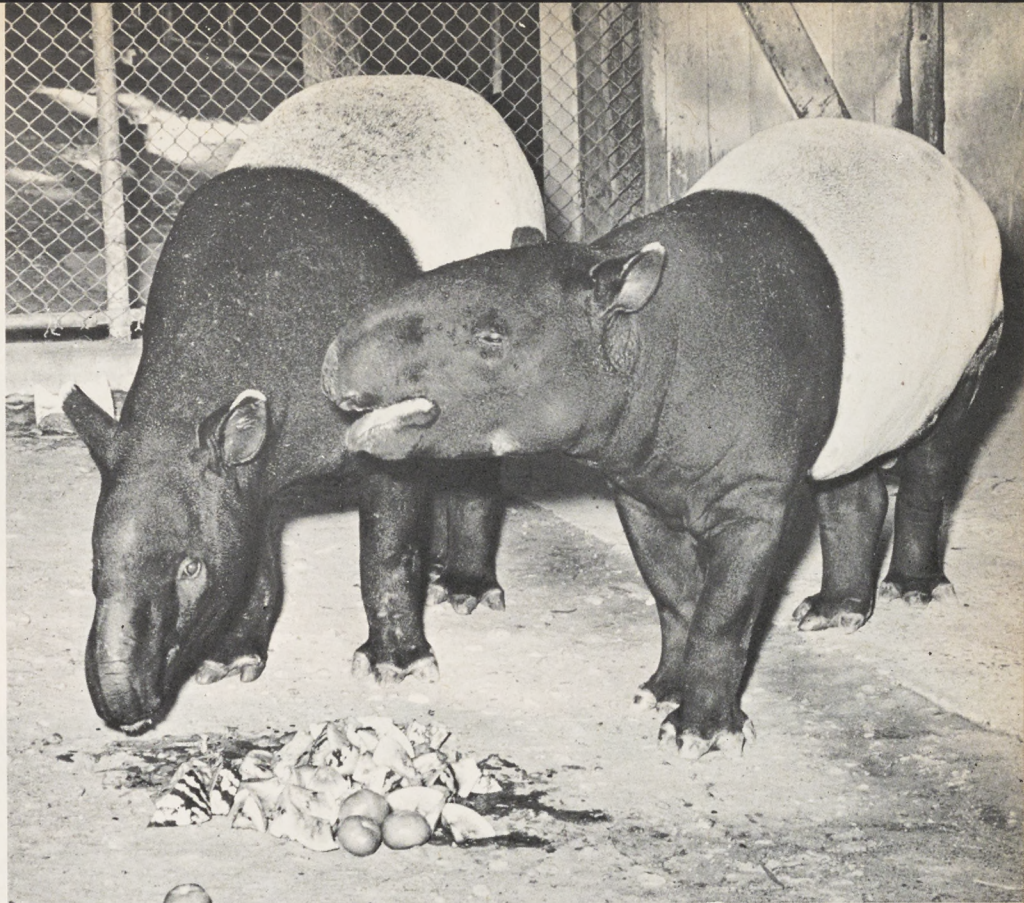
around 200 pounds. This elephant has smaller ears than the African variety, only one finger-like projection at the tip of the trunk, and usually only the bulls develop visible tusks. It is used as a riding and work animal.

Hyraces

Strange as it seems, the little, superficially rodent-like hyraces appear to bear a closer relationship to elephants than any other living creature. Native to Africa and Asia Minor, these are the creatures referred to as coney in the Scriptures. Their hoof-like nails and a pair of tusk-like teeth indicate their relationship to the pachyderms. The species usually exhibited here is the **East African Rock Hyrax**.

Odd-toed Ungulates

Most hoofed mammals are placed in one of two categories: those with an odd number of toes and those with an even number. All of the cloven-hoofed mammals belong to the second group. The odd-toed mammals include the horses, tapirs, and rhinoceroses. The most commonly exhibited members of the horse family are the zebras from the plains of eastern and southern Africa. Zebra markings are often compared with human finger prints in that no two animals are striped exactly alike. These animals are extremely nervous and can be savage and dangerous in captivity. Largest of the group is **Grevy's Zebra** of northern Kenya and Abyssinia. This large-eared, mule-like creature is characterized by extremely narrow stripes. It inhabits semi-arid scrubby areas. It was named after Jules Grevy, once president of France. The Burchell's zebras are distributed from northern Kenya south into South Africa. They are chunkier, smaller animals than the Grevy's and their stripes are much broader. A number of races of this species are recognized. **Chapman's**



The MALAY TAPIR is also called the "SADDLE-BACKED" TAPIR.

Zebra of south central Africa and Grant's Zebra of the highlands of British East Africa are usually exhibited here. The first is distinguished by tan interspaces between stripes and brown shadow stripes on flanks.

Of the many types of tapirs that existed in prehistoric times, only four have survived; one in southeastern Asia and three in tropical America. These are long-snouted, heavy bodied mammals, semi-aquatic in habit. A large part of the diet is composed of aquatic vegetation. The South American Tapir of tropical South America stands about three feet high and has a sparse coat of coarse brown hair and a short, bristly mane. The Malayan Tapir is also known as the Saddle-backed Tapir

because of a large, sharply defined area of gray on its back and sides. Elsewhere the body is black. This tapir stands about 40 inches at the shoulders and weighs about 520 pounds. It inhabits swampy forests from Malaya north to Tenasserim and occurs in Sumatra as well.

The rhinoceroses are confined to the Old World. Three species occur in southern Asia and adjacent islands, two are native to Africa. All are characterized by large size, nearly naked skin and by the presence of horn-like structures on the



Sally and Barney, our African **BLACK RHINOCEROSSES**, in one of their more affectionate moods.

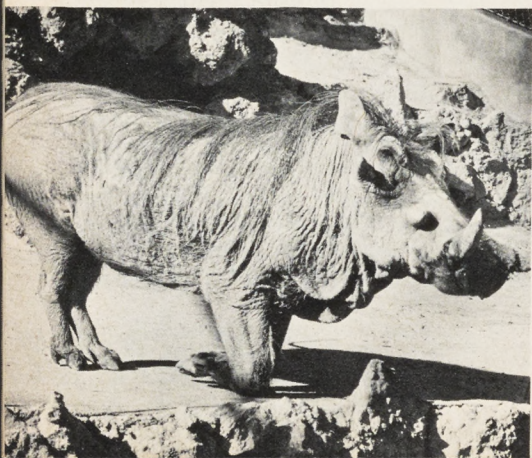
muzzle that are composed of agglutinated hair. The **Black or Hook-lipped Rhinoceros**, now becoming rare but once common throughout Africa south of the Sahara, is characterized by a prehensile, pointed upper lip and by the presence normally of two horns, the front one usually being the longer. Rhinos feed entirely on vegetation. Despite their formid-

able reputation, they are not vicious. Their hysterical charges are generally attributed to panic that results from singularly poor eye-sight.

AFRICAN WART HOG: Note the two pairs of wart-like knobs on its face.

Even-toed Ungulates

This order of cloven-hoofed mammals contains many families that include cattle, goats, sheep, swine, camels, deer, giraffes, antelope, and others. The true swine are native to the Old World, but domestic varieties have been introduced into all parts of the world. Africa is inhabited by a number of these mammals, only one of which is active during the daylight hours. This exception is the grotesque **Wart Hog**



which ranges through much of the continent south of the Sahara. The wart-like protuberances on the face are composed of fat. Males of this species stand about thirty inches high at the shoulder and may reach a weight of 210 pounds. The New World counterparts of the swine are known as peccaries. They are distinguished from their Old World relatives by small size, the presence of three instead of four toes on each hind foot, a well developed musk gland on the back, and short straight tusks. The **Collared Peccary** or **Javelina** ranges from the South American pampas north to Arizona. It weighs forty to fifty pounds when adult. These animals roam in packs and can be dangerous when provoked.

Although the hippopotamuses resemble big pigs, they belong to a family all their own. The family, containing two species, is confined to Africa. The **Nile Hippopotamus** is native to most of Africa's major rivers. Due to man's encroachment, it has disappeared from many of its former haunts, but is still abundant in some areas. The semi-aquatic monster lives in groups and is generally inoffensive where man is concerned, though it can be quite savage when persecuted. Weighing only sixty to ninety pounds at birth, it may reach a weight of four or five thousand pounds when adult. A number of hippos have been reared in the zoo. The other representative of this family is the rare **Pigmy Hippopotamus** of Liberia and Sierra Leone. Weighing 400-600 pounds, this species is far less aquatic than its large relative and prefers to roam alone or in pairs.

NILE HIPPOPOTAMUS: Many young have been born here.

