

WITH MR. ROOSEVELT IN TROPICAL AFRICA

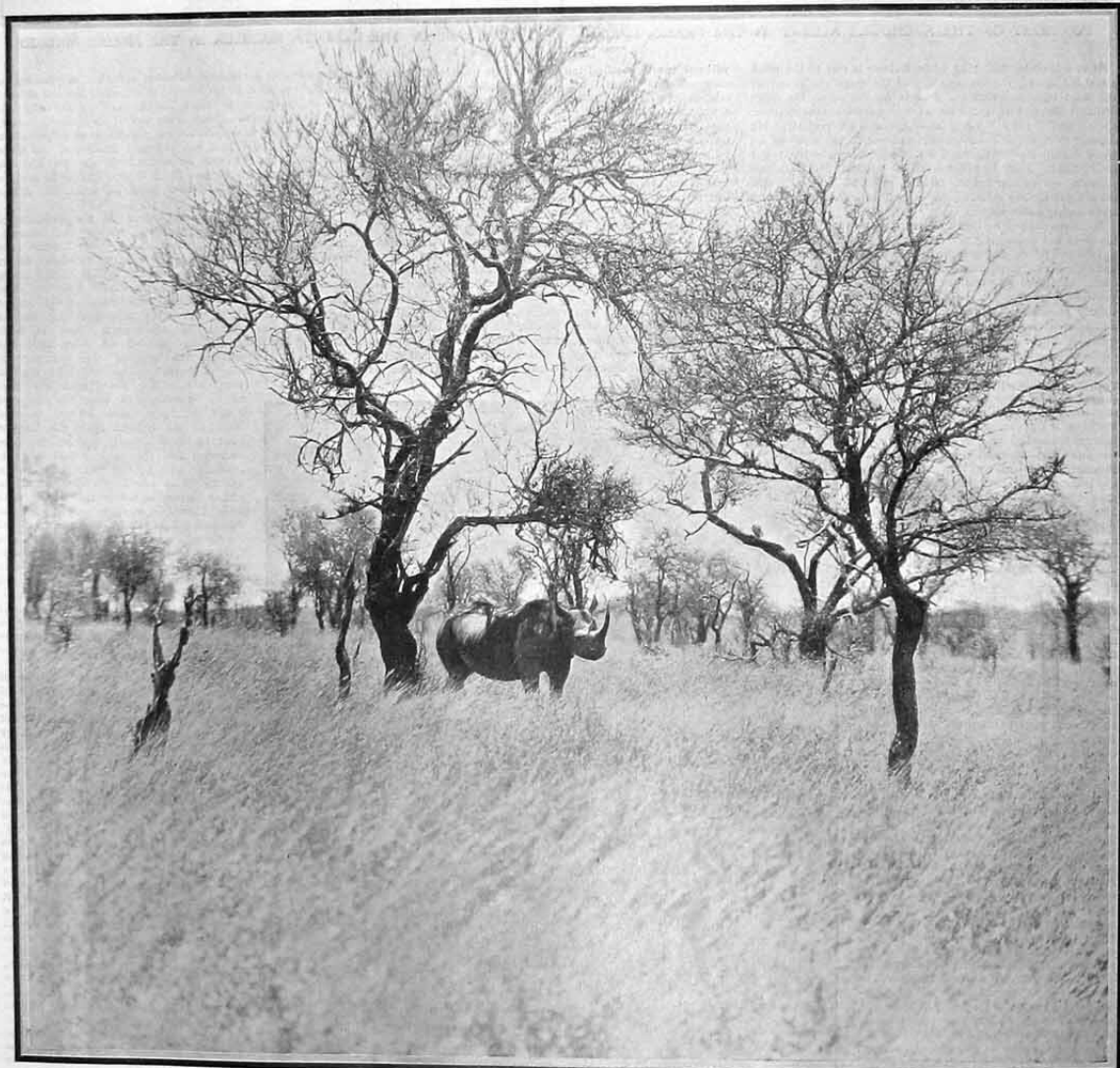
Types of Big Game Shy and Savage

These two pictures were taken by our correspondent in British East Africa, who has been investigating big game on Mr. Roosevelt's hunting grounds. They illustrate two different types of big game—the shy and the savage—both of which present unusually troublesome "stunts" to the photographer who would make them pass in their natural surroundings.



Mr. Dugmore experienced extraordinary difficulty in getting near enough to the herd of giraffes even to "telephoto" them at 350 yards, whereas on more than one occasion he had just about as much difficulty in getting away from a rhinoceros, perhaps the most dangerous of all the big game to be met with in Tropical Africa.

A HERD OF GIRAFFES ON THE MOVE. TAKEN BY A TELEPHOTO LENS AT 350 YARDS



A RHINOCEROS HESITATING WHETHER OR NOT TO CHARGE. FOUR OTHERS WERE WITHIN 80 YARDS WHEN THIS PICTURE WAS TAKEN

Copyright in the U.S.A. by A. R. Dugmore. All rights reserved.