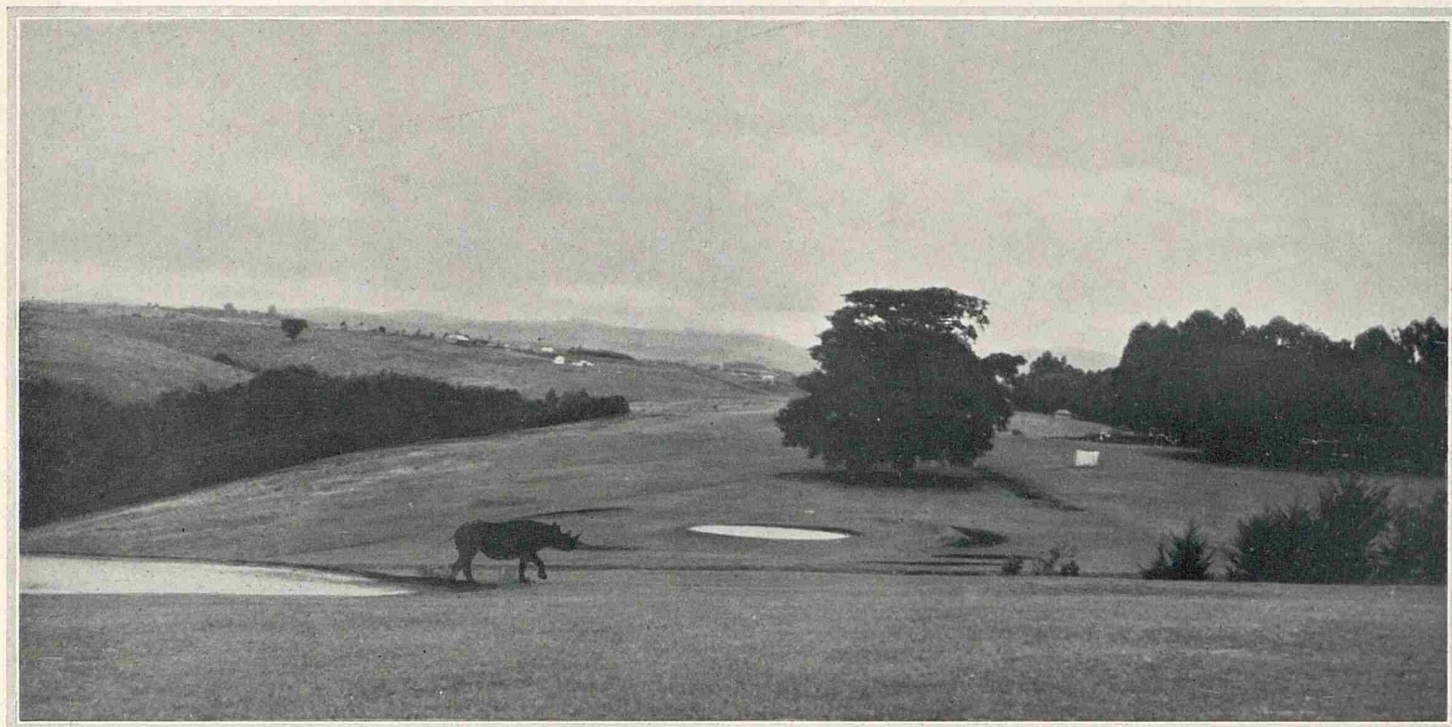
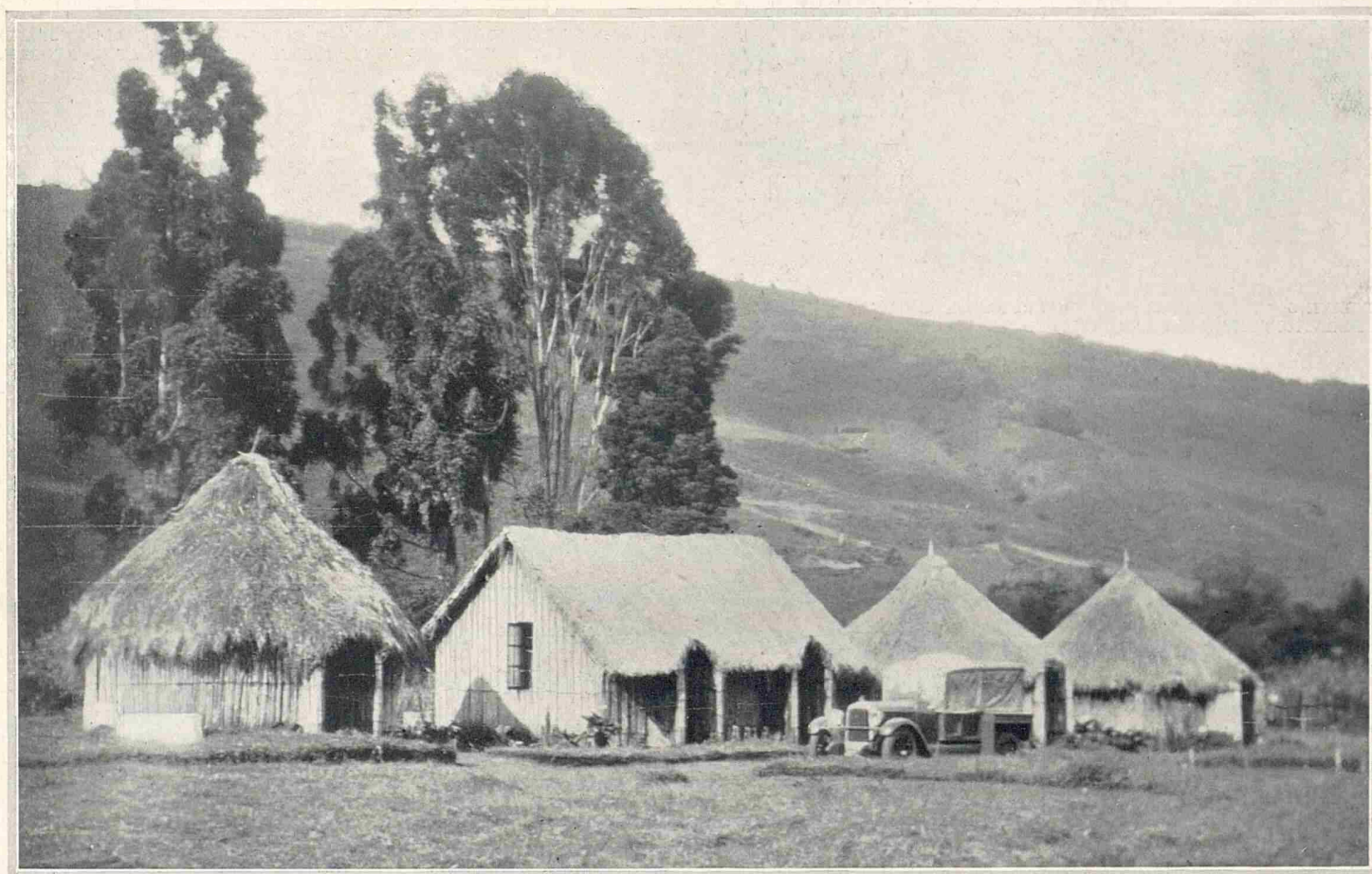


WHO CALLED FORE? RHINOCEROS ON THE FAIRWAY IN KENYA.



A LEISURELY EVENING VISITOR TO THE LINKS AT NYERI: A RHINOCEROS TRESPASSES ON THE FAIRWAY OF A GOLF COURSE IN KENYA COLONY.



A TYPICAL MOUNTAIN FISHING CAMP IN KENYA: THATCHED BAMBOO COTTAGES AT TUSO IN THE NEIGHBOURHOOD OF SOME FIRST-CLASS TROUT STREAMS.

The rhinoceros is not such a common trespasser as the hippopotamus on the golf courses of Kenya, but here is a case where one has wandered on the links at Nyeri. Hippo are commonly seen in the early morning or evening on the links at Jinja, by the Ripon Falls on the Victoria Nyanza. Kenya supplies some magnificent river fishing and trout have become perfectly acclimatised in the highlands of the Colony. The best streams are in high ground running amid a mixture of homely bracken and such tropical vegetation as tree ferns. Tusso camp is 8,000 feet up. The huts are built of bamboo, with the walls padded in with bracken, and thatched with banana leaves.

[Photographs by A. H. Wardle and F. M. Sanders.]