

# Blank Park Zoo

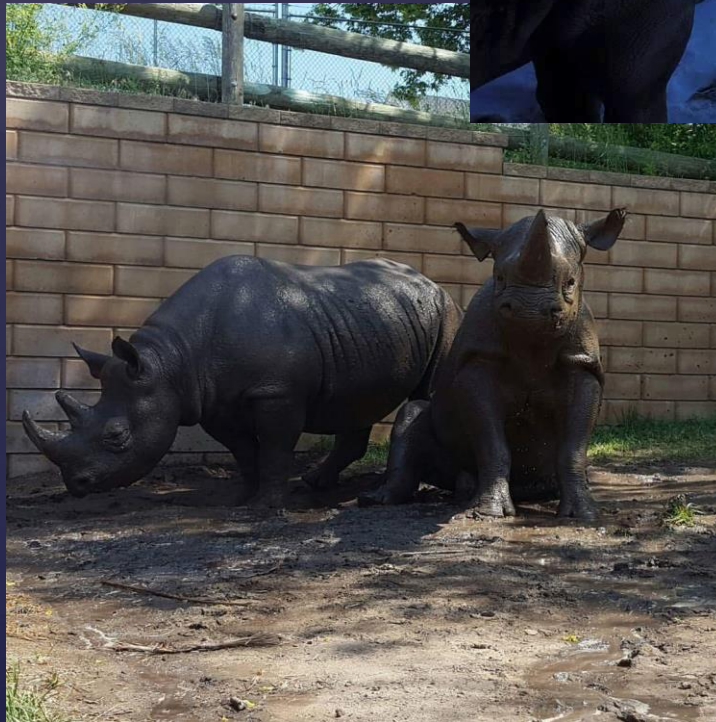


Shalini Babu  
Large Mammal Keeper  
[Shbabu@blankparkzoo.net](mailto:Shbabu@blankparkzoo.net)

# Blank Park Zoo

## Des Moines, Iowa

- Barn built in 2012
- Recommended breeding pair came to us in 2012
- 1.2 Eastern Black Rhinos





# Kiano (male)

- From Great Plains Zoo
- Age- 6 years old
- Weighs- ~2300lbs
- Wants to be everyone's best friend





# Ayana (Female)

- From Zoo Miami
- Age: 6 years old
- Weighs: ~2600lbs
- Independent woman, great first time mom!



# Prepping for our new arrival

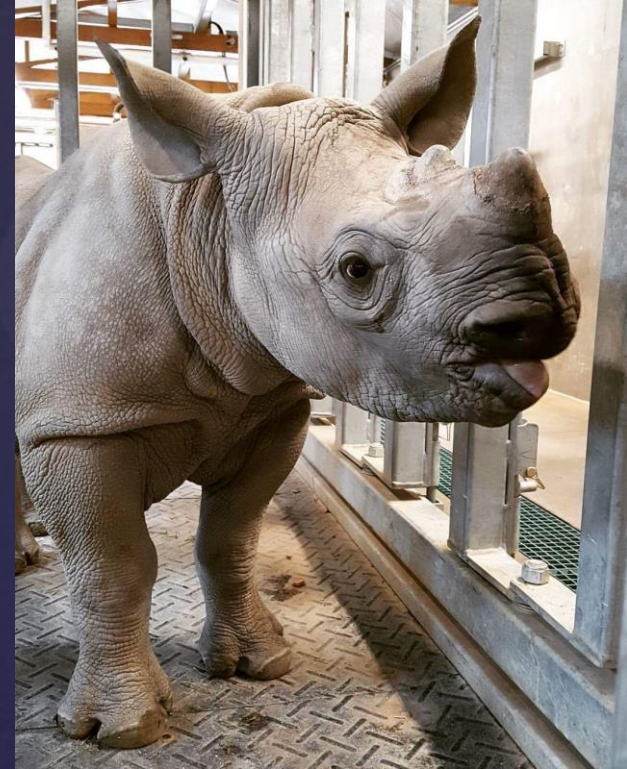
- Double plywood panels around stalls
- Hay/mulch bed
- HD cameras in every stall





# Tumani (Female)

- Age: ~ 10 months
- Weight: ~ 800lbs
- Our pride and joy



# Highlights of Facility and Program

- Barn set-up
- Docile rhinos
- Training Program
- Team





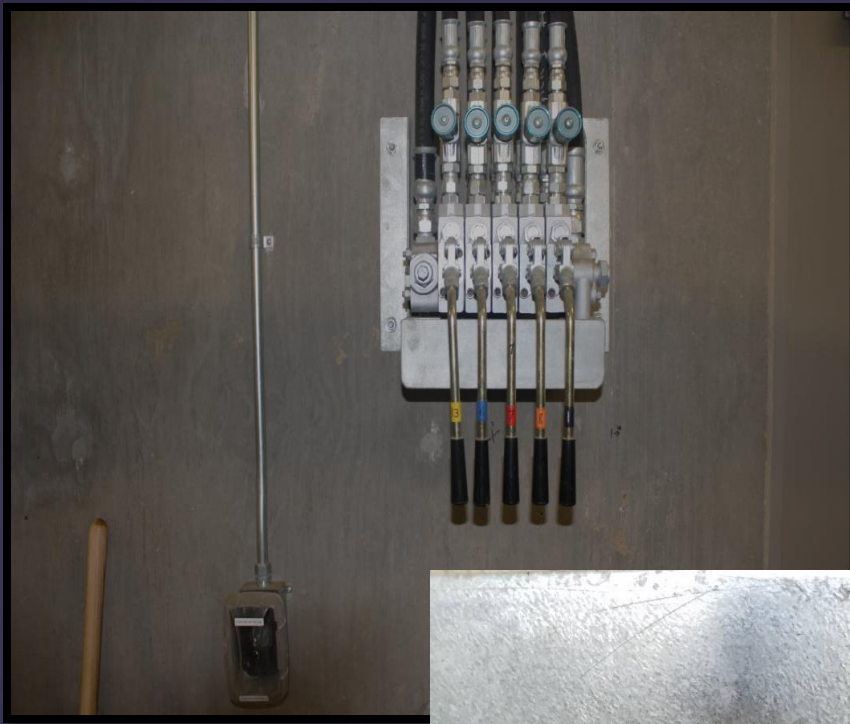
# Our barn

- 6 stalls
- Rubberized/concrete floors
- Stall showers
- Under floor heating
- Fauna Tamer restraint device
- Enrichment hanging devices in stalls
- Indoor public viewing (2 large stalls)
- Hydraulically powered doors















# Our Yards







# Diet and Daily Supplements

## Rhino 2509 (1.0 'Kiano') Diet (28 February 2017)

### WINTER (inside barn)

#### At Opening

- 2 lb. alfalfa hay
- 1 lb. grass hay
  - Fluff and mix alfalfa and grass hay thoroughly
- 2 lb. Mazuri Browser Rhino (SZ1P)
- 6 tabs Vitamin E

#### 1st Shift Onto Exhibit – 10am

- 3 lbs. alfalfa hay
- 3 lb. grass hay
  - Fluff and mix alfalfa and grass hay thoroughly
- 1 lb. Mazuri Browser Rhino (SZ1P)

#### On Exhibit – 2-3pm

- 2 lbs. alfalfa hay
- 1 lb. grass hay
  - Fluff and mix alfalfa and grass hay thoroughly
- 1 lbs. Mazuri Browser Rhino (SZ1P)

#### PM (offered in holding stall)

- 16 lbs. alfalfa hay
- 10 lbs. grass hay
  - Fluff and mix alfalfa and grass hay thoroughly
- 8 lbs. Mazuri Browser Rhino (SZ1P)
  - Fill belt feeder with portion of grain
- ½ cup Biotin (mix with grain)

#### IN ADDITION:

- Free choice white salt brick
- Browse as available
- Fresh water at all times
- Produce for training
  - Apple, sweet potato, carrot, banana, pear
    - No citrus or melon
    - Gut pumpkins before offering

### SUMMER (outdoor exhibit)

#### At Opening (offered in holding stall)

- 3 lbs. alfalfa hay
- 1 lb. grass hay
  - Fluff and mix alfalfa and grass hay thoroughly
- 4 lb. Mazuri Browser Rhino (SZ1P)
- 6 tabs Vitamin E

#### On Exhibit

#### (mix with Rhino 2508's diet if together)

- 4 lbs. alfalfa hay
- 4 lbs. grass hay
  - Fluff and mix alfalfa and grass hay thoroughly

#### PM (offered in holding stall)

- 16 lbs. alfalfa hay
- 10 lbs. grass hay
  - Fluff and mix alfalfa and grass hay thoroughly
- 8 lbs. Mazuri Browser Rhino (SZ1P)
  - Fill belt feeder with portion of grain
- ½ cup Biotin (mix with grain)

## Rhino 2508 (0.1 'Ayana') Diet (20 April 2017)

### WINTER (inside barn)

#### At Opening

- 1 lb alfalfa hay
- 1 lb grass hay
  - Fluff and mix alfalfa and grass hay thoroughly
- 1 lb Mazuri Browser Rhino (SZ1P)
- 6 tabs Vitamin E

#### 1st Shift Onto Exhibit – 10am

- 5 lb alfalfa hay
- 5 lb grass hay
  - Fluff and mix alfalfa and grass hay thoroughly
- 2 lb Mazuri Browser Rhino (SZ1P)

#### On Exhibit – 2-3pm

- 1 lb alfalfa hay
- 1 lb grass hay
  - Fluff and mix alfalfa and grass hay thoroughly
- 1 lb Mazuri Browser Rhino (SZ1P)

#### PM (offered in holding stall)

- 14 lb alfalfa hay
- 13 lb grass hay
  - Fluff and mix alfalfa and grass hay thoroughly
- 8 lb Mazuri Browser Rhino (SZ1P)
  - Fill belt feeder with portion of grain
- ½ cup Biotin (mix with grain)

#### In Addition:

- Free choice white salt brick
- Browse as available
- Fresh water at all times
- Produce for training
  - Apple, sweet potato, carrot, banana, pear
    - No citrus or melon
    - Gut pumpkins before offering
  - Minimal produce for enrichment

### SUMMER (outdoor exhibits)

#### At Opening (offered in holding stall)

- 1 lb alfalfa hay
- 1 lb grass hay
  - Fluff and mix alfalfa and grass hay thoroughly
- 4 lb Mazuri Browser Rhino (SZ1P)
- 6 tabs Vitamin E

#### On Exhibit

#### (mix with Rhino 2509's diet if together)

- 6 lb alfalfa hay
- 6 lb grass hay
  - Fluff and mix alfalfa and grass hay thoroughly
  - Offer in slow-feed enrichment device if possible

#### PM (offered in holding stall)

- 14 lb alfalfa hay
- 13 lb grass hay
  - Fluff and mix alfalfa and grass hay thoroughly
- 8 lb Mazuri Browser Rhino (SZ1P)
  - Fill belt feeder with portion of grain
- ½ cup Biotin (mix with grain)



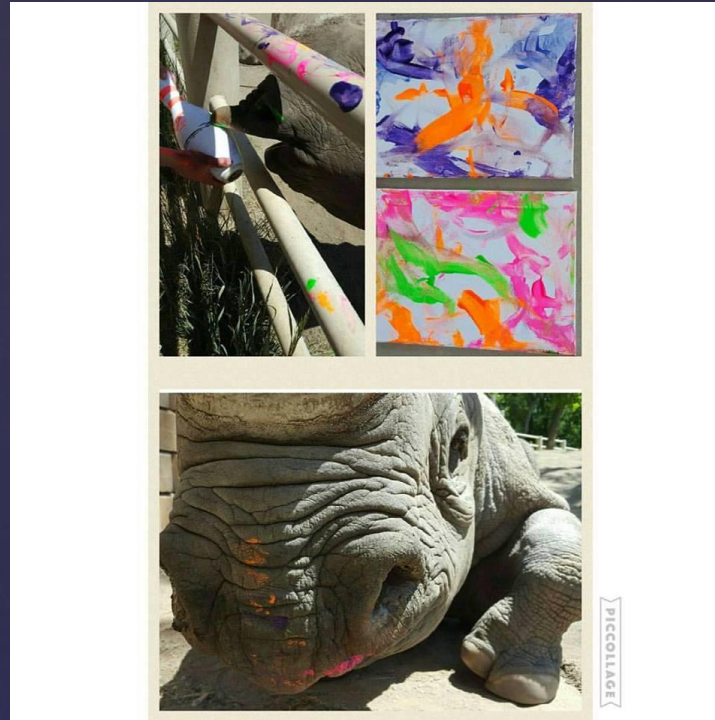
# Belt feeder for overnight grain

- Timed feeder
- Grain falls into 2 stalls throughout the night



# Daily Training

- 2 keepers, fist as “target” , usually in the RRD
- Behaviors: Come, target, head up, Open (mouth) Side present, over, desense
- Painting
- Voluntary blood draw, transabdominal/rectal ultrasound, enema, neck injections











# My Amazing Team!



# Challenges

- Urine deposits on walls, ballards
- Slowing down feeding for Ayana
- Dry skin on Kiano during the summer





# Questions?

