

ILLUSTRATED CATALOGUE
OF AN IMPORTANT COLLECTION OF
ANTIQUE CHINESE PORCELAINS

ANCIENT POTTERY, FINE JADES AND AGATES, CLOISONNÉ ENAMELS
BEAUTIFUL SNUFF BOTTLES, CARVED RHINOCEROS HORN
BRONZES AND OTHER OBJECTS

FORMED BY

ERNEST MARSH, J. P.
OF HASELMORE, SURREY, ENGLAND

AND RECENTLY ON LOAN EXHIBITION AT THE PUBLIC MUSEUM
AND ART GALLERY, KINGSTON-UPON-THAMES

TO WHICH HAVE BEEN ADDED

NEARLY ONE HUNDRED FINE

OLD CHINESE RUGS AND CARPETS

WHICH HAVE BEEN CONSIGNED BY THE LONDON HOUSE OF
MESSRS. YAMANAKA & COMPANY

THE ENTIRE COLLECTION TO BE SOLD
AT UNRESTRICTED PUBLIC SALE
ON THE AFTERNOONS HEREIN STATED

CATALOGUE WRITTEN BY MR. DANA H. CARROLL

THE SALE WILL BE CONDUCTED BY
MR. THOMAS E. KIRBY
AND HIS ASSISTANT, MR. OTTO BERNET, OF THE
AMERICAN ART ASSOCIATION, MANAGERS
MADISON SQUARE SOUTH
NEW YORK

RHINOCEROS HORN CUPS OF THE CH'IENTUNG PERIOD

167—SMALL RHINOCEROS HORN CUP

With Shou-lao riding on a stork and the eight Taoist immortals, all carved in relief around the exterior.

Length, 3½ inches.

168—RHINOCEROS HORN SHALLOW COUPE

In form of a curling lotus leaf, in translucent rhinoceros horn of tortoise-shell mottling, with brilliant polish.

Diameter, 4½ inches.

169—RHINOCEROS HORN TALL CUP

Carved in relief and undercutting with Chinese nobles who in a mountain gorge among pine trees reach a state of blissful forgetfulness in contemplation and study of the beautiful. Incised inscription.

Height, 5⅜ inches.

170—RHINOCEROS HORN TRIPOD LIBATION CUP

After a bronze form, carved in relief in the ogre motive and with lizard dragons mounting the sides.

Height, 4⅝ inches.

171—RHINOCEROS HORN CUP

Carved in the motives of ancient bronzes, with reliefs on an incised fret ground, fret borders, and scrolled dragons in undercutting.

Length, 6 inches.

172—RHINOCEROS HORN CUP WITH HANDLE

Dragons mount from the handle over the edge of the cup, and a relief band in the ogre motive with dentated ridges encircles it.

Height, 4¾ inches.

173—RHINOCEROS HORN CUP

Pine, bamboo and plum trees carved in relief and undercutting; lizard dragon in relief on the inner surface.

Length, 6½ inches.

174—RHINOCEROS HORN TALL CUP WITH CHRYSANTHEMUM BUSH
HANDLE

Carved with ogre and dragon bands in relief, and plantain leaf borders lightly incised.

Height, 5⅛ inches.

175—RHINOCEROS HORN TALL CUP

Carved in relief and openwork in the lotus motive throughout.

Height, 6⅝ inches.

176—RHINOCEROS HORN CUP

An old man and two horses, one of them rolling, are seen among mountains and pine trees, trees furnishing an openwork handle.

Height, 5¼ inches.

176A—RHINOCEROS HORN CUP

Elliptical and shallow, in light brown horn, brilliantly polished, pine tree handle in relief and undercutting.

Length, 6⅝ inches.

177—LARGE RHINOCEROS HORN CUP

Mottled horn, with bold and rich carvings of peonies, chrysanthemums, fruit trees and a butterfly.

Height, 5½ inches.

178—LARGE RHINOCEROS HORN CUP

Boldly carved with a wooded mountain gorge, through which a boat with passengers is rushing down rolling waters.

Height, 4⅞ inches.



179—RHINOCEROS HORN CUP

Elliptical trumpet-shape; intricately carved in relief and undercutting with scenes of the Taoist Paradise, presenting various immortals and attendants, and on the interior an imperial dragon among clouds.

Height, $5\frac{1}{4}$ inches.

180—RHINOCEROS HORN CUP

Carved with trees and a stream among the mountains.

Height, 4 inches.

181—RHINOCEROS HORN CUP

Leaf-shape, with angular foliations; carved in ancient bronze style, with ogre heads and dragons on an incised thunder-scroll ground.

Length, $6\frac{5}{8}$ inches.



182—RHINOCEROS HORN LONG COUPE

Shaped as a dug-out boat formed of a tree stump, and bearing a worthy reclining against gnarled branches.

Length, 12 $\frac{3}{8}$ inches.

183—RHINOCEROS HORN CUP

Carved with the lotus and shell fish and a leaping-wave base.

Height, 4 $\frac{3}{4}$ inches.

184—RHINOCEROS HORN CUP

Carved as a dug-out boat formed from a tree stump, with a seated figure holding a sceptre and embowered in branching coral, and the lotus and prunus in blossom.

Length, 7 $\frac{7}{8}$ inches.

184A—RHINOCEROS HORN CUP

Relief carvings of Taoist immortals and Shou-lao mounted on a stork, with trees of the peaches of longevity forming a double handle.

Height, 4 $\frac{1}{4}$ inches.

**CARVED IVORY BOXES OF THE CH'IENTUNG
PERIOD WITH COVERS**

185—IVORY CYLINDRICAL BOX

Carved with archaic dragons, sceptre-heads and flowers, tinted, on a perforate ground of intricate diaper.

Diameter, $2\frac{3}{4}$ inches.

186—IVORY OCTAGONAL BOX

Carved with dragons and flowers, bats and dogs Fu, squirrels among the grapes, and a phoenix on a peony tree, on a pierced diaper ground.

Length, $2\frac{7}{8}$ inches.

187—IVORY CYLINDRICAL BOX OR CRICKET CAGE

Carved with the flowers of the four seasons, tinted, on a ground of reticulate diaper.

Diameter, $3\frac{1}{8}$ inches.

188—IVORY DOMED BOX

All-over pattern of a highly conventionalized lotus scroll, the dome pierced.

Diameter, $3\frac{1}{2}$ inches.

189—IVORY CASKET WITH HINGED COVER AND LOCK

Quadrilateral, on four bat feet. Sides incised with a swastika lattice, enclosing foliate medallions in cavo-rilievo, between corner posts carved with bamboo in relief; the cover in alto-rilievo with palace gardens and the "thousand personages."

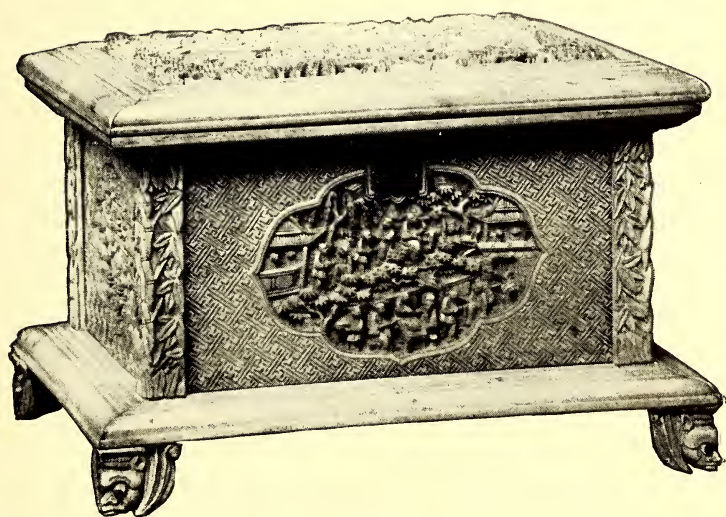
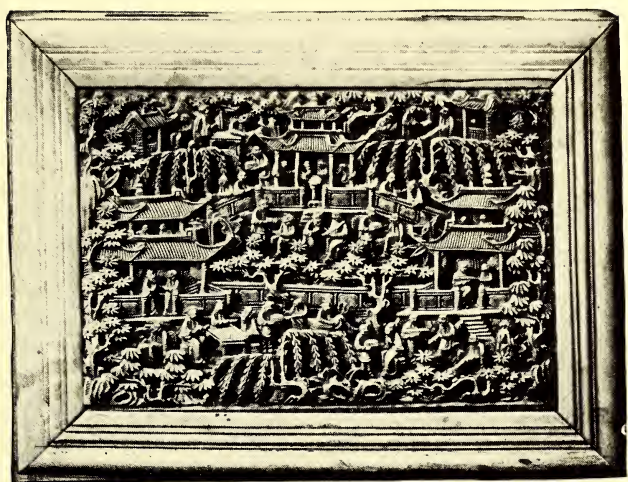
Height, $4\frac{1}{8}$ inches; length, $6\frac{1}{8}$ inches; width, $4\frac{3}{4}$ inches.

(Illustrated)

190—IVORY-PANELED TABLE SCREEN

The ivory carved with peonies in bud and blossom in relief.

Height, $10\frac{1}{2}$ inches.



First Afternoon

191—Ivory QUATREFOIL BOX

Incised and relief carvings of palace gardens, figures, flowers and emblems, delicately tinted; bat and peaches in cavo-rilievo. (Repaired.)

Diameter, $3\frac{7}{8}$ inches.

192—Ivory GLOBULAR BOX OR CRICKET CAGE

Perforated ground throughout the sphere, the diaper in the polar zones differing from that of the main surface, which displays peony, peach and gourd sprays, bats and butterflies, in low relief and soft tones.

Diameter, $3\frac{1}{4}$ inches.

193—Ivory RECTANGULAR CASKET

Oblong with metal corners and feet. Exterior carved with Chinese gardens, pavilions and travelers; interior with melon vines and butterflies on a tinted basket-work ground. On the cover the peony, lotus, plum and magnolia, and the melon vine with melons as handle.

Length, 7 inches.

Shown at the Burlington Fine Arts Club, London, Exhibition of Chinese Art, 1915.

CARVED IVORY FIGURES OF THE MING PERIOD

194—Ivory STATUETTE

Seated figure of Kuan-yin with rosary; richly colored by the fumes of incense.

Height, $3\frac{7}{8}$ inches.

195—Ivory STATUETTE

Kuan-yin seated, with man-child on her knee; dark mahogany coloring.

Height, $3\frac{1}{2}$ inches.

196—Ivory Statuette

Kuan-yin standing, holding the curative vase; light brown mottling.

Height, 5½ inches.

197—Ivory Figure Group

Chinese lady standing, holding a boy on her arm. Rich yellow and dark mahogany mottling.

Height, 6 inches.

198—Ivory Statuette

Shou-lao standing, holding a peach of longevity in his hand.

Height, 6¾ inches.

199—Ivory Statuette

Kuan-yin seated on a rock throne, one hand laid over the other. White, warm yellow and rich mahogany-red, with brilliant polish.

Height, 6¼ inches.

200—Ivory Statuette

Standing figure of bearded Daruma, in flowing robes, the color a rich and brilliant mahogany-brown throughout, with yellowish mottlings.

Height, 8⅝ inches.

201—Ivory Statuette

Standing figure of Idaten, with warm mahogany-red and yellow mottlings. Traces of gilding.

Height, 9 inches.

202—Ivory Statuette

The god of longevity with staff and fan; mellow, mottled color.

Height, 10¼ inches.

203—IVORY STATUETTE



203

An emaciated priest, his robes delicately engraved, leaning on a staff, a rosary on his wrist. Rich brown, with yellow mottling.

Height, 7 $\frac{5}{8}$ inches.

Shown at Burlington Fine Arts Club, Exhibition of Chinese Art, London, 1915.

204—IVORY STATUETTE

Kuan-yin carrying child holding lotus bud, her hair and rosary-tassel engraved and blackened; warm, rich and mellow coloring.

Height, 10 inches.

205—IVORY STATUETTE

Confucius standing, in girdled robe, his hands folded; delicate carving at the back. Mellow, brilliant color. (Chipped at head and foot.)

Height, 9 $\frac{7}{8}$ inches.

Shown at Burlington Fine Arts Club, London, Exhibition of Chinese Art, 1915.

206—IVORY STATUETTE

Kuan-yin with the vase, standing; soft grayish and mellow brown tones.

Height, 10 inches.

Shown at the Burlington Fine Arts Club, London, Exhibition of Chinese Art, 1915.

207—IVORY STATUETTE

Standing sage, with folded arms, in warm and mellow coloring.

Height, 11 inches.

Shown at Burlington Fine Arts Club, Exhibition of Chinese Art, London, 1915.

208—IVORY STATUETTE

Shou-lao holding a branch of the peaches of longevity, which encircles his head. Brilliant, soft and mellow color.

Height, 11 $\frac{5}{8}$ inches.

209—IVORY STATUETTE

Shou-lao, clutching his staff in one hand and a peach, his emblem, in the other, in rich dark mahogany coloring.

Height, 11 inches.

210—IVORY STATUETTE (*Ch'ien-lung*)

Standing figure of a Lohan girdled with leaves, carrying a gourd, and leaning on a staff, left arm upraised; white and yellow coloring.

Height, 10 $\frac{7}{8}$ inches.

211—IVORY STATUETTE

Shou-lao with staff and fan, in warm yellow and rich mahogany brown, brilliant coloring.

Height, 10 $\frac{1}{8}$ inches.

212—IVORY STATUETTE

The god of longevity with fan and staff, with rich and brilliant patina of soft and warm coloring. Black cap.

Height, 13 $\frac{1}{2}$ inches.

First Afternoon

213—Ivory Statuette

Shou-lao leaning slightly forward, one hand beneath his robe, the other in the attitude of holding his staff. Ripe, mellow coloring, with areas of warm mahogany-red.

Height, 13 inches.

Shown at Burlington Fine Arts Club, Exhibition of Chinese Art, London, 1915.

214—Ivory Statuette

Shou-lao caressing a peach, in ivory of mottled tone, with areas of grayish, weathered surface.

Height, 13¾ inches.

GROUP OF POLYCHROME, INLAID AND CINNABAR LACQUERS

215—Two Black Lacquer Trays (*Ch'ien-lung*)

Painted in polychrome with flowers and fruit, bird and insect.

Diameter, 4⅞ inches.

216—Four Black Lacquer Trays (*Ch'ien-lung*)

Decorated with Chinese figures in outdoor scenes, in mother-of-pearl and soapstone inlay relief.

Diameter, 4½ inches.

217—Four Brown Lacquer Trays (*Ch'ien-lung*)

Chinese boating scenes in delicate polychrome and gilding, with floral and dragon borders. In black lacquer box.

Diameter, 4¾ inches.

218—Three Petal-form Red Lacquer Trays (*Ch'ien-lung*)

Gilt decoration of Chinese figures in garden scenes.

Diameter, 4⅞ inches.