

Plate 1a

*X-ray showing stage of development of mandibular dentition of a wild 5.08 y old female black rhinoceros. Permanent P2 is displacing its deciduous counterpart. Crests of M3 below bone level. A captive male at an exact age of 6.8 y showed a precisely similar dental development.*

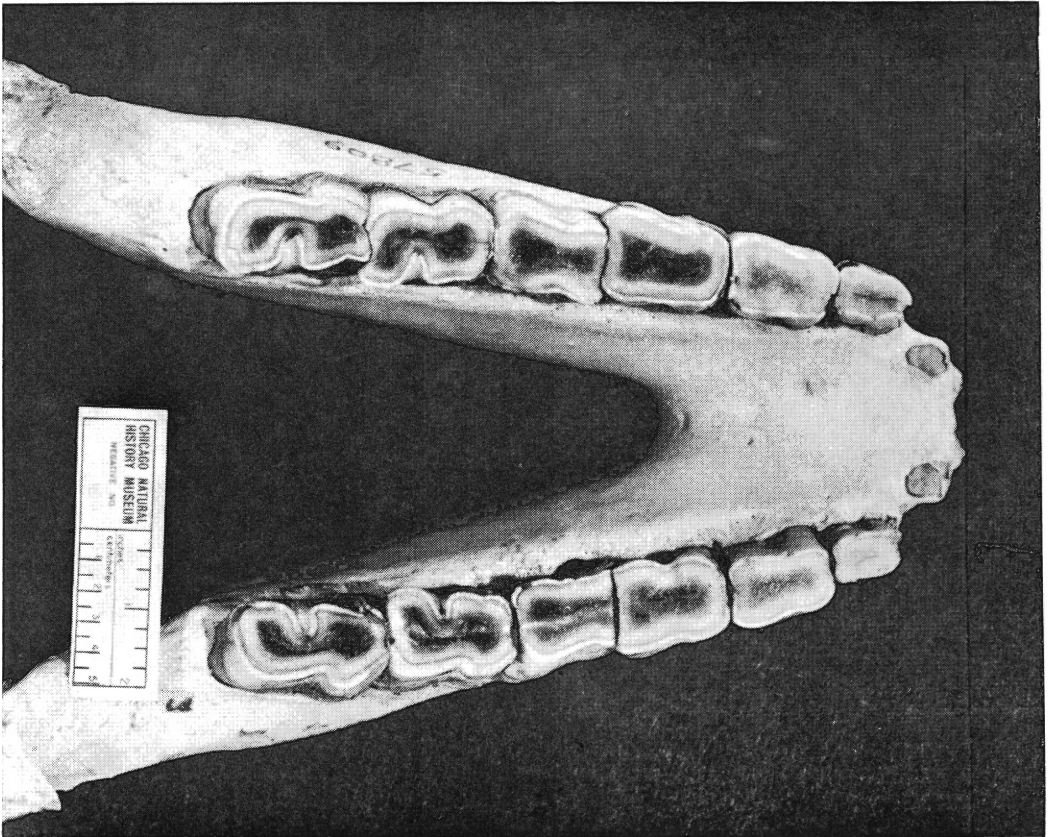


Plate 1b

*Wear patterns on the occlusal surfaces of the mandibular dentition of "Pharaoh", a captive 34 y old male rhinoceros. (Courtesy of the Chicago Natural History Museum).*

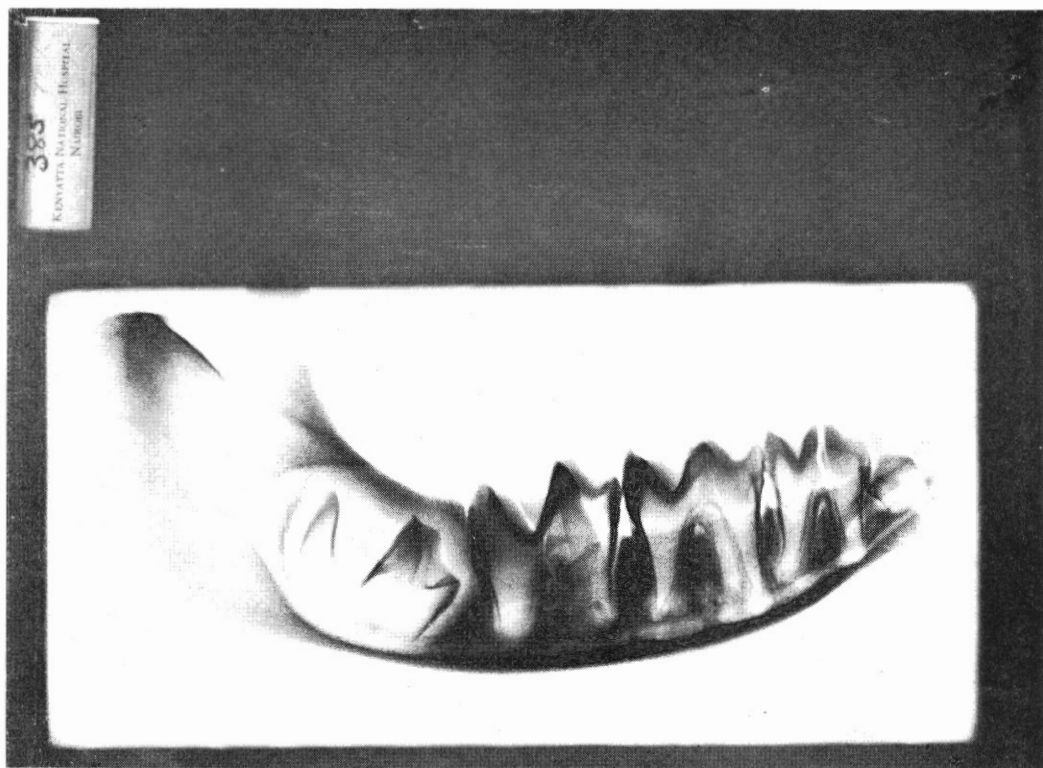


Plate 2a

*X-ray showing stage of development of mandibular dentition of a 5.5 month old captive female black rhinoceros. M1 forming with anterior crest situated just below bone level. A wild male of 5 months showed closely similar dental development.*

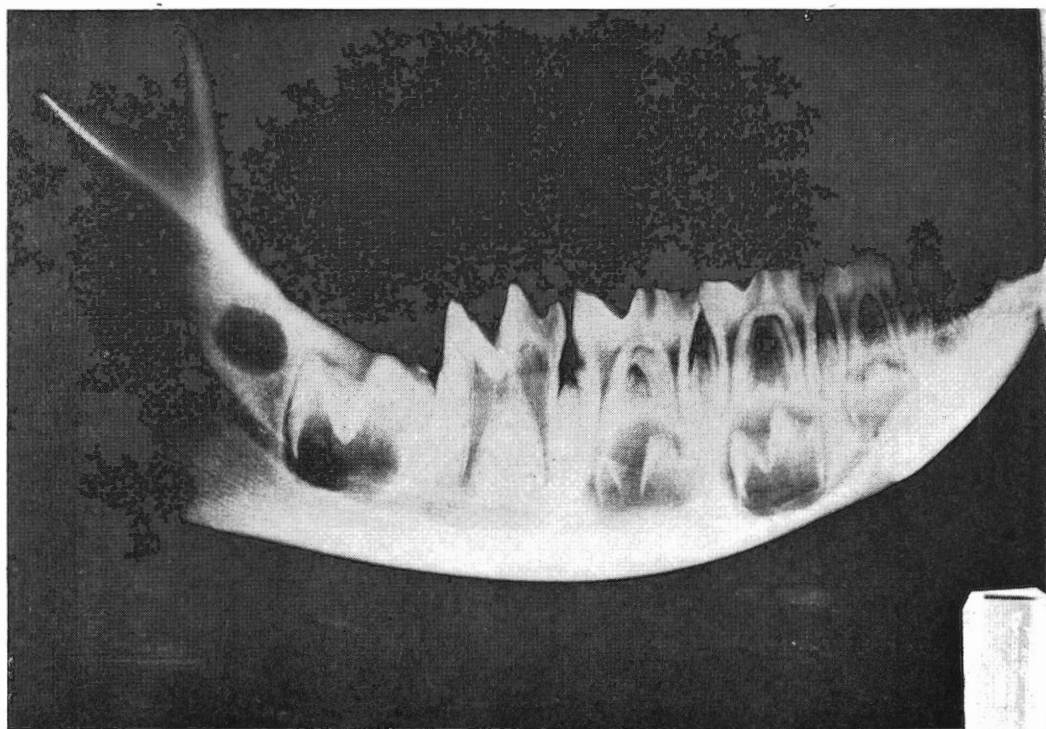


Plate 2b

*X-ray showing stage of development of mandibular dentition of a wild female black rhinoceros at known age of 3.0 y. Permanent P2-P4 are all erupting within alveoli. Crests of M2 just below bone level, and alveolus of M3 just forming.*