

The Zoological Gardens,

Calcutta.

An Illustrated Souvenir.

*Price As. 12.*

Further copies of this booklet may be had from  
Publisher, *See Souvenir.*

*29, Theatre Road, Calcutta.*

Kindly mention this booklet in Advertising Advertisements.



1505  
29720

*Rough Plan of the Zoological Gardens. The figures correspond with the numbers of the pictures.*

INDIA OFFICE  
S ——— N  
20 JAN 1915  
LIBRARY







(4) GENTRY HOUSE.

Facing Cutting House we come to the *Stimulans* entrance. This is a narrow pass of ground, surrounded by a strong brick wall, in which a cylindrical gate of *Stimulans* lies in the height of their entrance. It is this stage of your wanderings the most purchased as the gate are not quite finished, and as you will be wonderfully received by these beams!

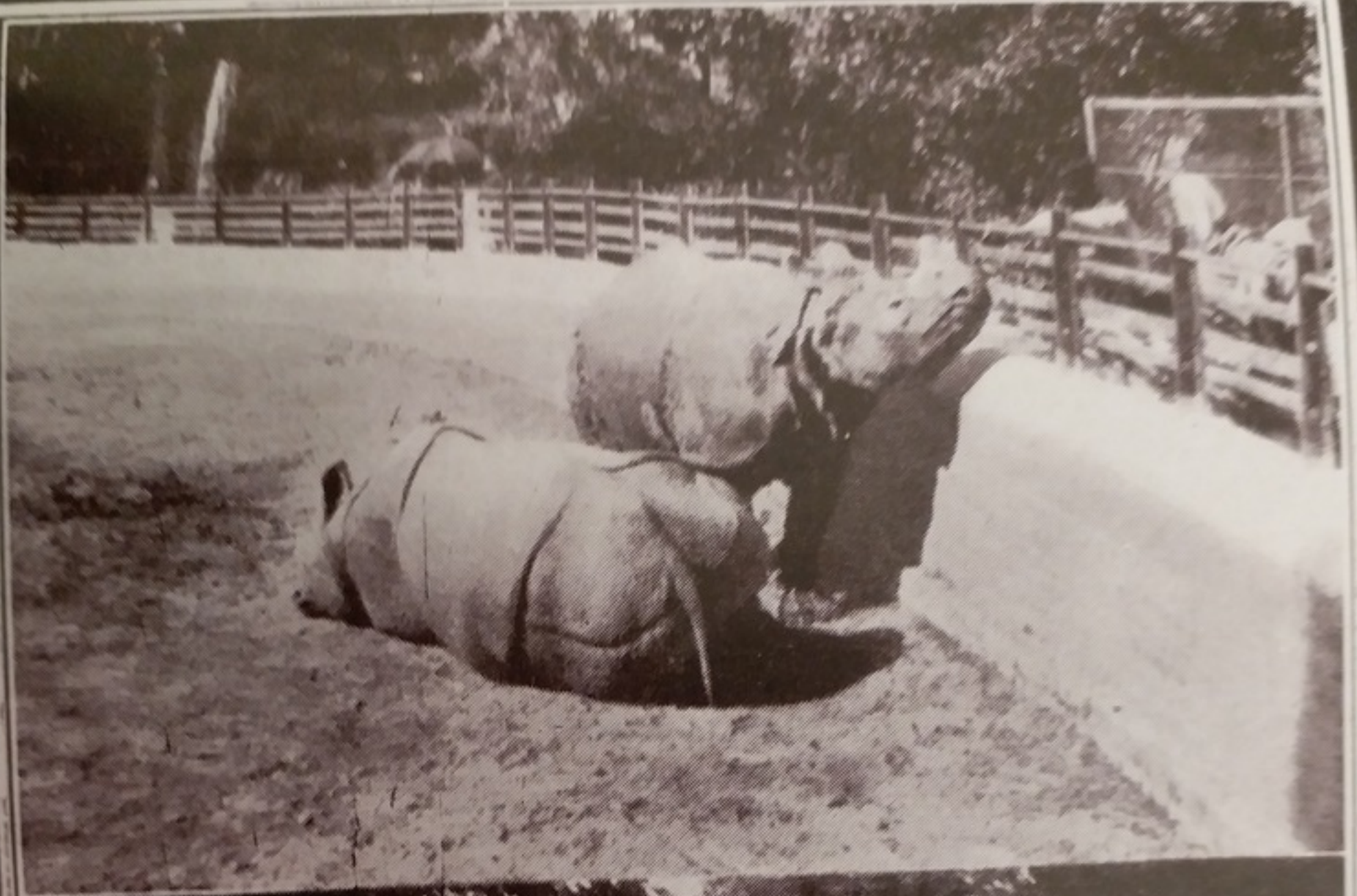
Close at hand we find the slightest waying to and to from time of health. Of late we have arrived to give children a nice round, their being useful as well as ornamental. It is also quite as simple as the art of picking up coins and depositing them in the larger's pocket. Try him and on.



Passing Gubbay House we come to the Rhinoceros enclosure. This is a marshy piece of ground, surrounded by a strong brick wall, in which a splendid pair of Rhinoceri live in the height of their element. If at this stage of your wanderings the nuts purchased at the gate are not quite finished, one or two will be thankfully received by these beasts!

Close at hand we find the elephant swaying to and fro from force of habit. Of late he has served to give children a ride round, thus being useful as well as ornamental. He is also quite an adept in the art of picking up coins and depositing them in his keeper's pocket. Try him and see.

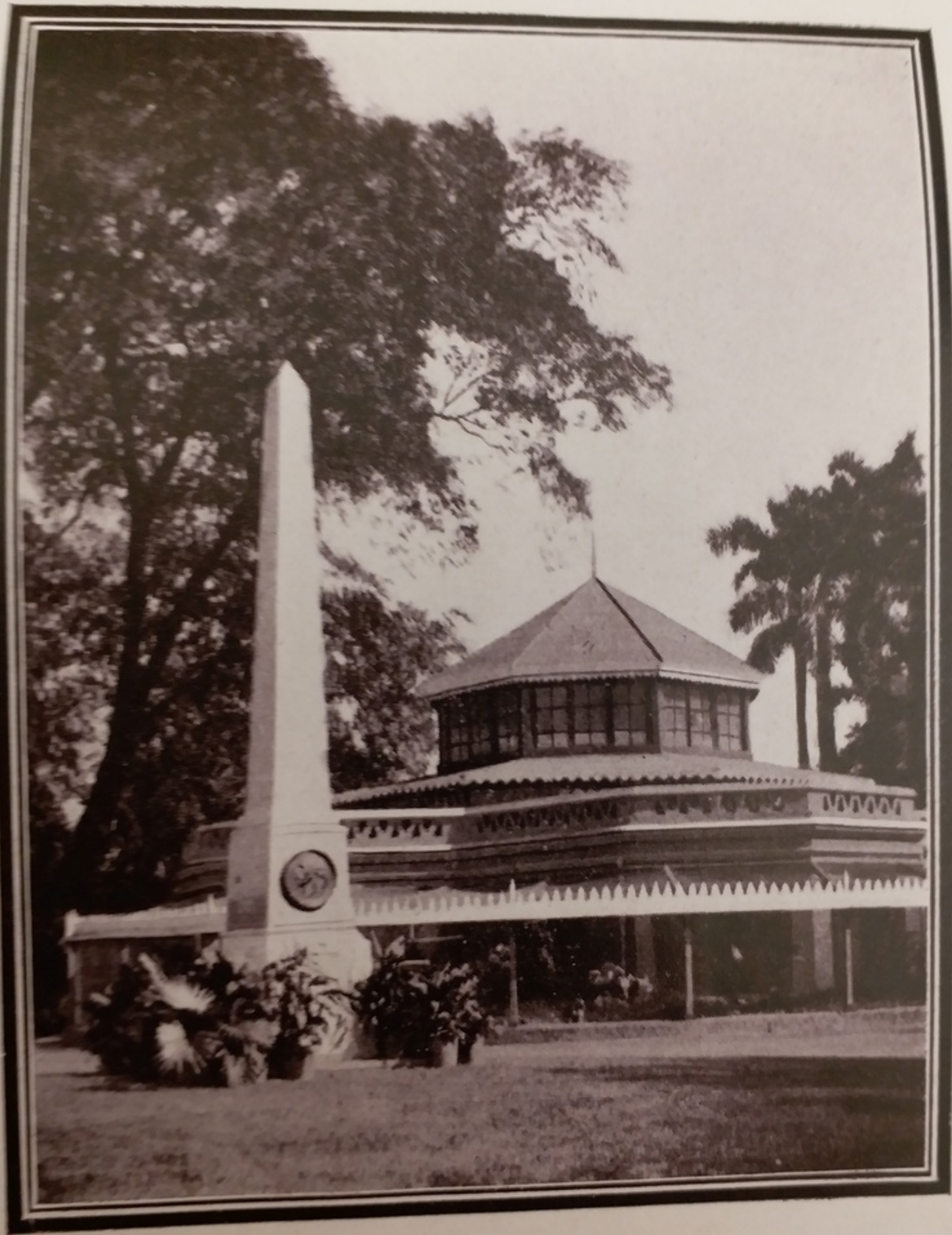




(5.) THE RHINOCERI.

(6.) THE ELEPHANT.





(7.) MONUMENT ERECTED TO CARL LOUIS SCHWENDLER.





(10.) EZRA HOUSE.





(11.) THE REPTILE HOUSE.





(13.) BURDWAN HOUSE.