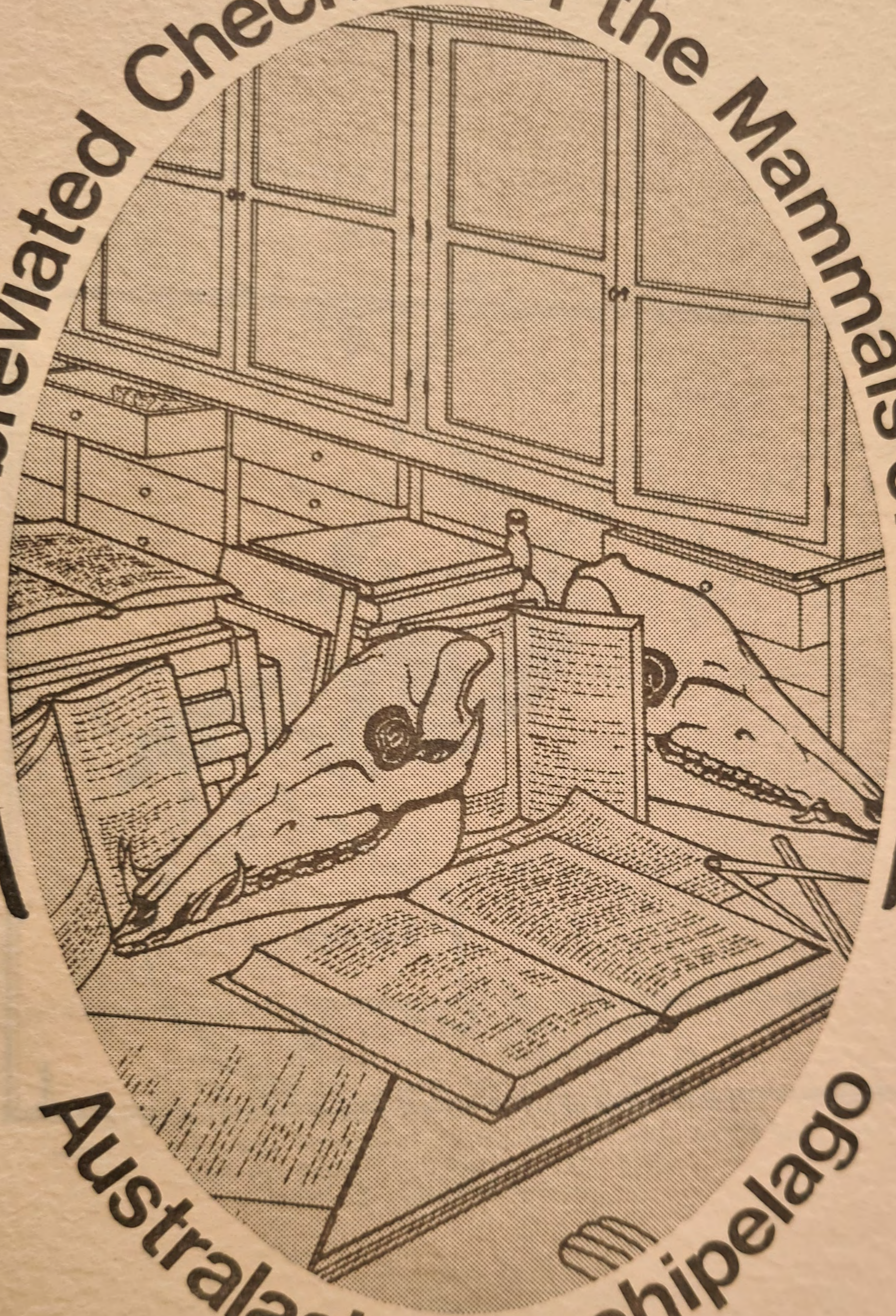


**Abbreviated Checklist of the Mammals of the**



**Australasian Archipelago**

**Nico J. van Strien**

SCHOOL OF ENVIRONMENTAL CONSERVATION MANAGEMENT, BOGOR, INDONESIA  
1986

## Family Rhinocerotidae

- Rhinoceros sondaicus* Desmarest, 1822 - Javan rhinoceros  
*R. s. sondaicus* Desmarest, 1822 (=sundaicus) Sumatra (presumably extinct); Java; extralimital  
 [floweri Gray, 1868]  
 [javanicus Geoffroy & F. Cuvier, 1824] (= javanensis)  
 [javanus G. Cuvier, 1829]  
 [nasalis Gray, 1868]
- Dicerorhinus sumatrensis* (Fischer, 1814) - Sumatran rhinoceros  
*D. s. sumatrensis* (Fischer, 1814) (= sumatraensis, = sumatranensis) Sumatra; extralimital  
 [sumatranus (Raffles, 1822)]  
*D. s. harrissoni* Groves, 1965 Borneo  
 [borniensis (Hose & McDougall, 1912)] (nomen nudum)

## Order ARTIODACTYLA

## Family Suidae

- Sus barbatus* Mueller, 1838 - Bearded pig  
*S. b. barbatus* Mueller, 1838 Borneo + Burung + Juanta; Laut + Sebuk; Karimata isls; extralimital  
 [borneensis Major, 1897]  
 [gargantua Miller, 1906]  
 [longirostris Nehring, 1885]
- S. b. ahoenobarbus* Huet, 1888 Palawan; Culion, Calamian isls  
 [calamainensis Heude, 1892]  
 [palavensis Nehring, 1889]
- S. b. balabacensis* Major, 1897 Balabak isl  
*S. b. oi* Miller, 1902 Batam, Bintang, Galang, Sugi, Dorian, Kundur, Ungar - Riau isls  
 [? branti Kloss, 1921]  
 [edmondi Sody, 1937]  
 [sumatranus Kelm, 1939] Sumatra; Bangka
- Sus scrofa* Linnaeus, 1758 - Common wild pig (also extralimital)  
*S. s. floresianus* Jentink, 1905 Flores  
*S. s. natunensis* Miller, 1901 N Natuna isls  
*S. s. niadensis* Miller, 1906 Nias; Babi isl, near Simeulue; Tuangku isl, Batu isls; Enggano  
 [babi Miller, 1905]  
 [enganus Lyon, 1916]  
 [tuancus Lyon, 1916]
- S. s. pallidiloris* Mees, 1957 Sumatra  
*S. s. papuensis* Lesson & Garnot, 1826 New Guinea; Yapen; Waigeo; Yule; Misool; Ternate; Salawati; Tidore; Seram; Batanta; Aru isls; Kai isls  
 [aruensis Rosenberg, 1878]  
 [ceramensis Rosenberg, 1878] (= aramensis)  
 [niger Finsch, 1886]  
 [ternatensis Rolleston, 1877]
- S. s. rhionis* Miller, 1906 Ungar, Sugi, Bintang, Batam, Butan, Bawa, Chombol, Karimon, Galang - Riau isls; Lingga isls  
 [andersoni Thomas & Wroughton, 1909] Timor + Roti
- S. s. timoriensis* Mueller & Schlegel, 1843 Java  
*S. s. vittatus* Boie, 1828 (Temminck, 1828 - nomen nudum)  
 [milleri Jentink, 1905]
- "Wild" pigs of uncertain affinities occur in Bali, Sumba, Sumbawa and Lombok and feral or hybrid populations are found throughout the area.
- Sus verrucosus* Boie, 1832 - Javan pig  
*S. v. verrucosus* Boie, 1832 (Temminck, 1828 - nomen nudum) Java  
 [mystaceus Gray, 1873] (hybrid ?)
- S. v. amboinensis* Major, 1897 Amboina  
*S. v. celebensis* Mueller & Schlegel, 1843 N Sulawesi; Halmahera; Ternate; Morotai; Bacan  
 (or spec. ?) Seram
- S. v. ceramicus* Gray, 1868 S Sulawesi  
*S. v. maritimus* (Heude, 1899) (= maritanus)  
 [macassaricus (Heude, 1899)]  
 [nehringii Jentink, 1905]

## Family Rhinocerotidae

- Rhinoceros sondaicus Desmarest, 1822 - Javan rhinoceros  
 R. s. sondaicus Desmarest, 1822 (=sundaicus) Sumatra (presumably extinct); Java;  
 [floweri Gray, 1868] extralimital  
 [javanicus Geoffroy & F. Cuvier, 1824] (= javanensis)  
 [javanus G. Cuvier, 1829]  
 [nasalis Gray, 1868]
- Dicerorhinus sumatrensis (Fischer, 1814) - Sumatran rhinoceros  
 D. s. sumatrensis (Fischer, 1814) (= sumatraensis, = sumatranensis) Sumatra;  
 [sumatranus (Raffles, 1822)] extralimital
- D. s. harrissoni Groves, 1965 Borneo  
 [borniensis (Hose & McDougall, 1912) (nomen nudum)]

## Order ARTIODACTYLA

## Family Suidae

- Sus barbatus Mueller, 1838 - Bearded pig  
 S. b. barbatus Mueller, 1838 Borneo + Burung + Juanta; Laut +  
 [borneensis Major, 1897] Sebuku; Karimata isls; extralimital  
 [gargantua Miller, 1906]  
 [longirostris Nehring, 1885] Palawan; Culion, Calamian isls
- S. b. ahoenobarbus Huet, 1888  
 [1892]