

**INDIAN MUSEUM
BULLETIN**

January, 1974



CALCUTTA

LIST OF SOME IMPORTANT FAUNAL REPRESENTATIVES OF THE KAZIRANGA NATIONAL PARK (FAUNA & FLORA)

L. C. DAS & A. K. MUKHERJEE

THE Kaziranga Wildlife National Park situated in the Brahmaputra valley in the State of Assam, India, was originally constituted in the year 1908 and was named 'The Kaziranga Game Reserve'. In 1926, it was declared as Game Sanctuary and in 1953 the word 'Game' was correctly replaced by 'Wildlife'. This wildlife sanctuary has now been given the status of a National Park under notification of Assam Government No. FOR/WL/722/68, 1st February 1974. This park sustains the world famous One-horned Rhinoceros—which in 1904 were reduced to only about a dozen and but for protection and preservation from 1908, the number swelled upto 658 according to recent census (Lahon and Soonwal 1973) in 1972. As it contains the highest number, almost half the total number of rhinoceros in India, it is aptly called the 'Rhinoland of India'. The Park is not only an interesting refuge of the Indian Rhino but also of large and small mammals, of which the more prominent are the Indian Buffalo (*Bubalus bubalis*), the Tiger (*Panthera tigris*), the Hog Deer (*Axis porcinus*), the Sambhar (*Cervus unicolor*), the Swamp Deer (*Cervus duvauceli*) and the Elephant (*Elephas maximus*). Besides these animals there are diversified colourful birds—resident and migratory, reptiles comprised of venomous snakes, predatory lizards, varanus, gavials, amphibians, varieties of fishes

and several other representatives of the marshy faunal biotope.

The Kaziranga National Park lies between latitude 26.30' N and 26.45' N, 90°5' E and 93°40' E, that covers an approximate area of about 430 sq. kilometres (166 sq. miles) of flat marshyland with patches of evergreen pockets in slightly higher level lying on the south bank of the mighty Brahmaputra river and on the north of the Mikir hills. Annual floods in Brahmaputra bring in change in the topography due to erosion and new formation of land and river islets or total disappearance of some areas. The Park stretches about 25 kilometres east-west along the National Highway (No. 37), approachable both from Gauhati (Borjhar) and Jorhat (Rowriah) Air Port by motor car from a distance of 216 kilometres and 97 kilometres respectively.

Champion and Seth (1968) classified the wet-alluvial grassland under 252 Forest Type. The climate being tropical and humid and precipitation for eight months of the year (average annual 100 inches = 200 cm. rainfall), it sustains a luxurious flora of evergreen forest trees, ferns, creepers and mixed understories on the hills and thick tall and short grass with *Salmalia*—*Albizia* patches on the flat. Except for some such forest-tree patches and numerous beels the entire area is a grassland. The

Mikir hills give rise to number of streams which cut cross, winding and joining each other to flow to the main stream and finally pour into the Brahmaputra.

The flat is also studded with vast expanse of shallow lakes known as 'Beels', which occupy almost 5.60 per cent of the total area of the Park. During monsoon which is usually from May to August low-lying areas get inundated and when the rivers are in spate much of the Park area becomes a vast sheet of water due to overflowing of the beels. The banks of streams, rivulets, nullahs and rivers that are slightly elevated bear tree-forests and serve as islands in this extensive flooded area. Wild animals naturally are forced to move to such higher grounds for shelter. In dry season from December to March the shallow beels that dry up provide open area and attract all herbivores, to graze in them. To induce new shoots the Forest Department puts to fire to the old tall dry grass, popularly known as the 'Elephant grass' as an annual routine which is generally undertaken in January and February. The grass and reeds occupy almost two-thirds of the Park and grow where the subsoil water level is available between 1-3 metres except for aquatic species. These grasses comprise of several species, the dominant being *Erianthus ravaneae* in dry areas and *Phragmites karka* in wet areas. Other species that comprise the tall grass are *Saccharum spontaneum*, *Saccharum arundinaceum*, *Saccharum procerum*, *Erianthus filifolius*, *Erianthus elephantinus*, *Imperato cylindrica*, *Arundo donax*, *Pollinia ciliata*. Several other low grasses that grow around beels such as *Andropogon* spp., *Chrysopogon* spp., *Cynodon* spp., etc. are attractive fodder for all herbivores. The patchy forests and scattered trees that are found to resist and tide over floods are the Simul (*Salmalia malabarica*), Satian (*Alstonia scholaris*), Ssoo (*Dalbergia sissoo*), Polash (*Butea monosperma*) that flower in winter season and those that flower in rainy season are Koroi (*Albizia procera*), (*Albizia lucida*) (*Albizia lebak*), Gurga *Albizia* (*Schima wallichii*),

Uriam (*Bischofia javanica*), Paroli (*Stereospermum personatum*), Kadam (*Anthocephalus cadamba*) Outtenga (*Dillenia indica*), Bajiw (*Dillenia scabratta*), Ahoi (*Vitex peduncularis*), Bogori (*Zizyphus mauritiana*), Azar (*Lagerstroemia parviflora*), (*Lagerstroemia speciosa*), (*Lagerstroemia flosreginea*), Hizal (*Careya arborea*) and *Terminalis belerica*, *Ficus* spp.

So far there is no consolidated list of species representing the wild life of Kaziranga. There had been a pressing demand by the visitors to this park for a list of common animal species as well as of birds, reptiles and fishes. Opportunity has been utilized by the authors in preparing this list of the fauna which includes the mammals, birds, reptiles and fishes that have been observed by them while the senior author was incharge of the then Kaziranga Wildlife Sanctuary as the Divisional Forest Officer, State of Assam, in the year 1966, and the second author was on faunistic trips in recent years to that area conducted on behalf of the Zoological Survey of India. Recognition of the animals have been based on standard literature available to them, a list of which has been appended. Abbreviations that have been used in the table denote, as follows :ff

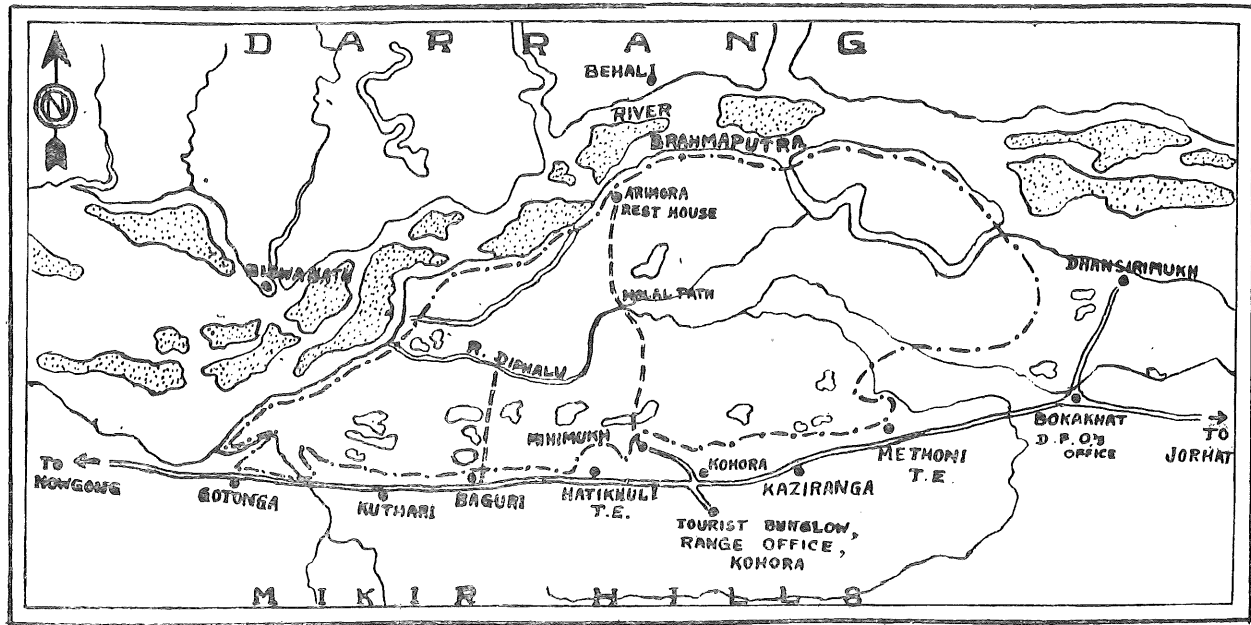
C=Common ; F=Frequent ; I=Infrequent ; R=Rare ; Rs=Resident ; M=Migrant.

Numbers 1-12 under column 6 denote 1=January ; 2=February ; 3=March ; 4=April ; 5=May ; 6=June ; 7=July ; 8=August ; 9=September ; 10=October ; 11=November ; 12=December. Digits in parenthesis denote estimated number of the animal.

Hindi names of the species as far as could be ascertained have also been provided—this is an important contribution to let people know the animals by our National language.

As far as possible local Assamese names have been given, new Assamese names have been rendered from English and Assamese pronunciation of "S" and "Sh" which have been rendered as "H" in order to retain the correct pronunciation.*

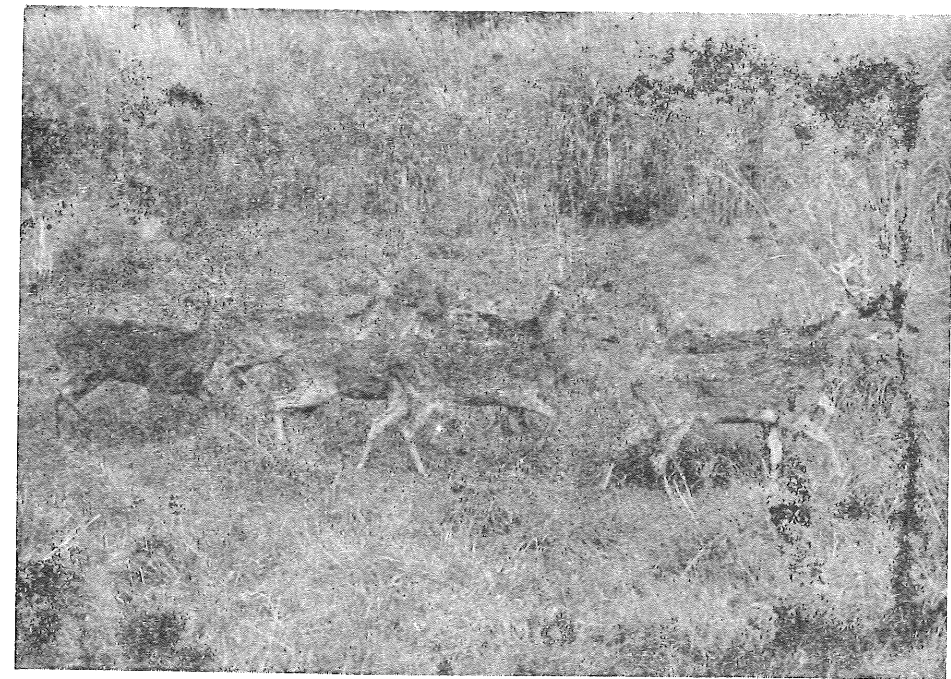
* The authors wish to express their sincere appreciation to Shri D. K. Ghosal (Zoological Survey of India) for checking the scientific names of birds and mammals, and to Shri P. Singh (Indian Police), Dr. M. P. Khal (National Geographical Society, U.S.A.), Mr. Herold S. Peter and Mrs. Moureen Thom, for giving observation data on the birds of Kaziranga.



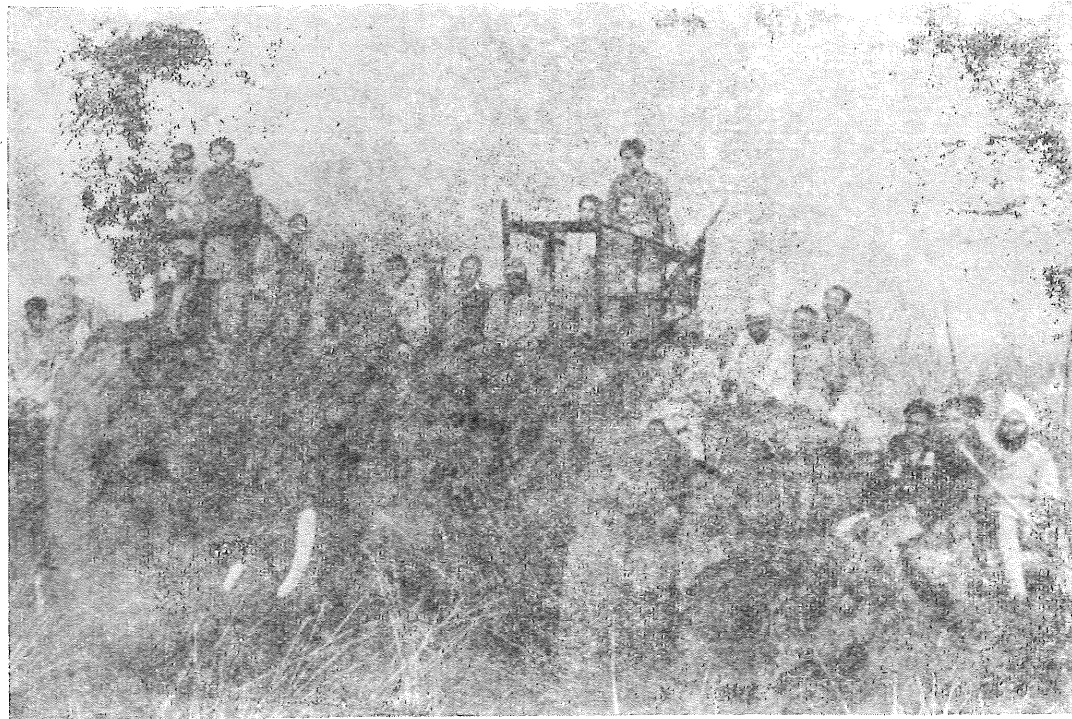
Rhino cow with new born calf



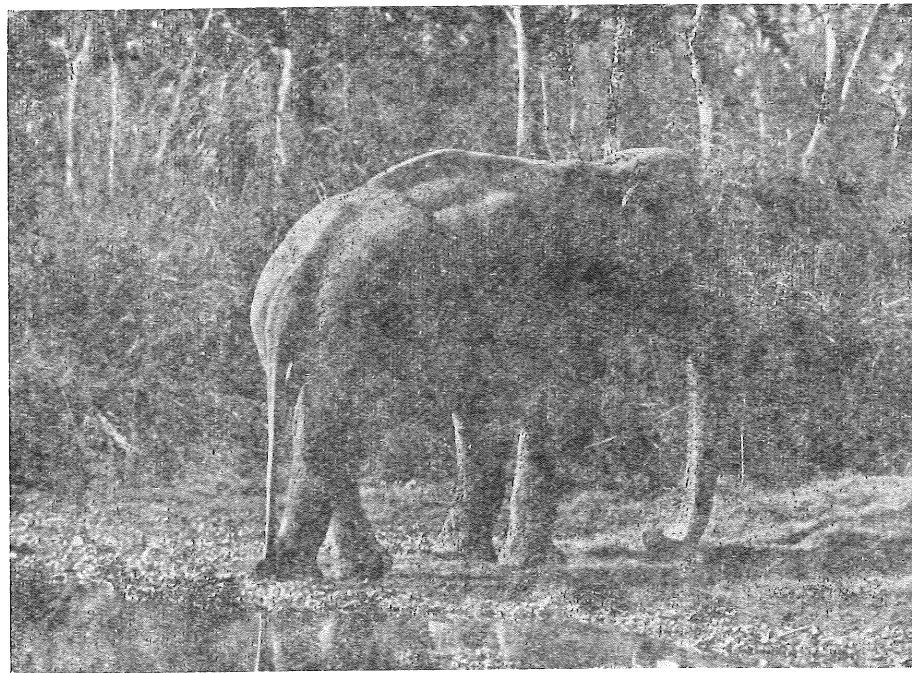
Kaziranga in a fine winter morning with the Himalayas behind



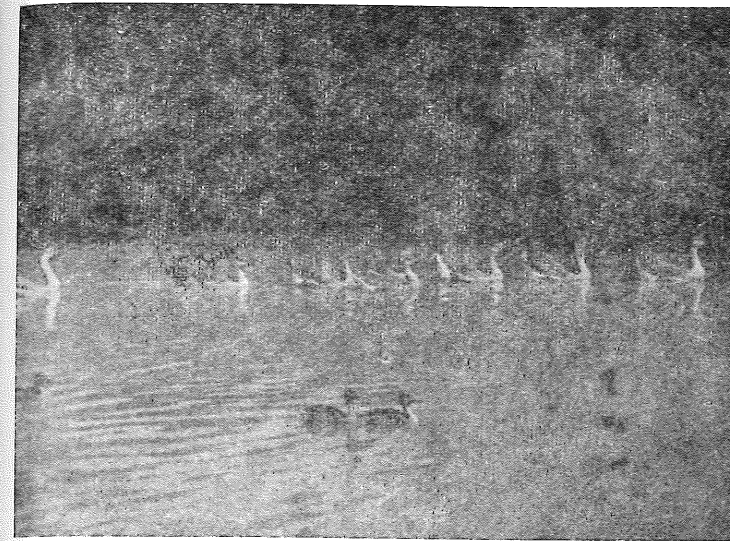
Swamp deer on the run



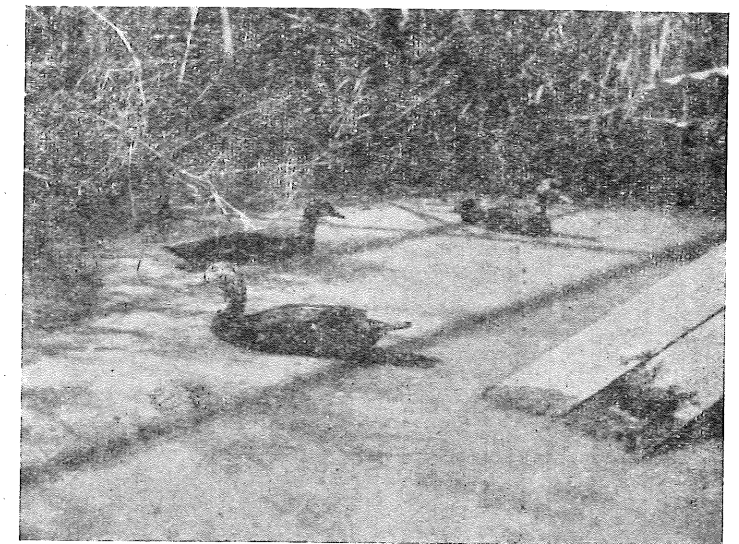
When Mrs. Indira Gandhi visited Kaziranga



A massive 9'2" muckna



Migratory geese in Kaziranga



3 White-wing wood-ducks

LIST No. 1
MAMMALIA

Sl. No.	Scientific Name & Natural Order	English Name	Hindi Name	Assamese Name	Remarks
1	2	3	4	5	6
Primates, Cercopithecidae					
1.	<i>Hylobates hoolock</i> (Harlen)	Hoolock or White browed Gibbon	Uluk	Holu bandor	I
2.	<i>Macaca mulatta</i> (Zimmermann)	Rhesus Monkey	Bandar	Nilaji bandor	F
Colobidae					
3.	<i>Presbytis entellus</i> (Dufresne)	Common Langur or Hanuman Monkey	Langur or Hanuman	Hanuman	F/R
Carnivora, Ursidae					
4.	<i>Helarctos malayansus</i> (Raffles)	Malayan Sunbear	Reechh or Bhalu	Ghosh bhaluk	R
5.	<i>Selenarctos thibetanus</i> (G. Cuvier)	Himalayan Black Bear	Reechh or Bhalu	Kola bhaluk	(6) I
6.	<i>Melursus ursinus</i> (Shaw)	Sloth Bear	—	Mati bhaluk	I
Felidae					
7.	<i>Panthera tigris</i> (Linnaeus)	Royal Bengal Tiger	Bagh or Sher	Dhekia potia Bagh	(29) I
8.	<i>Panthera pardus</i> (Linnaeus)	Leopard	Tendua, Sona Chita or Chita Bagh	Nahor phutuki bagh	(12) R
9.	<i>Felis chaus</i> Guldenstaedt	Jungle Cat	Jangli Billi or Kattas	Bonoria makuri	R
Viverridae					
10.	<i>Viverra zibetha</i> (Linnaeus)	Large Indian Civet Cat	Kattas	Hepa	R
11.	<i>Viverricula indica</i> (Desmarest)	Civet	Kasturi	Johamal	R
Herpestidae					
12.	<i>Herpestes edwardsi</i> (Geoffroy)	Mongoose	Mangus or Nyul	Neul	I
13.	<i>Herpestes urva</i> (Halgos)	Swamp or Crab Eating Mongoose	—	Dol neul	R
Canidae					
14.	<i>Cuon alpinus</i> (Pallas)	Wild Dog, Dhole	Dhole, Jangli Kutta or Ban Kutta	Rang kukur	R
15.	<i>Canis aureus</i> (Linnaeus)	Jackal	Gidhar	Hial	I
Mustelidae					
16.	<i>Lutra lutra</i> (Linnaeus)	Common Otter	Ud, Udbilao or Pani Kutta	Ood	(200-300) C
Rodentia Sciuridae					
17.	<i>Ratufa</i> spp.	Squirrel	Karrat, Rasu	Kerketua	C
Hystricidae					
18.	<i>Hystrix indica</i> Kerr	Indian Porcupine	Sayal, Sahi	Ketala pohu	C
Lagomorpha Leporidae					
10.	<i>Lepus nigricollis ruficaudatus</i> Geoffroy	Indian Hare	Khargosh	Haha pohu	R

1	2	3	4	5	6
Proboscidea					
Elephantidae					
20.	<i>Elephas maximus</i> Linnaeus	Indian Elephant	Hathi (Male), Hathini (Female)	Hati	(420) F
Ungulata					
Perissodactyla					
Rhinocerotidae					
21.	<i>Rhinoceros unicornis</i> Linnaeus	Great Indian One-horned Rhino	Gainda	Garh	(700) C
Artiodactyla					
Bovidae					
22.	<i>Bos gaurus</i> H. Smith	Indian Bison or Gaur	Gaur, Gaur gai	Methun	(18) R
23.	<i>Bubalus bubalis</i> (Linnaeus)	Indian or Water Buffalo	Arna (Male), Arni (Female)	Bonoria moh	(550) C
Cervidae					
24.	<i>Cervus unicolor</i> Kerr	Sambar	Sambar	Hor or Kath-khowa pohu	(100) C
25.	<i>Cervus duvaucelli</i> Cuvier	Swamp Deer	Barasingha, Maha	Dol harina	(500) C
26.	<i>Axis porcinus</i> (Zimmermann)	Hog Deer	Para	Khatia pohu	(6-6050) C
27.	<i>Muntiacus muntjak</i> (Zimmermann)	Barking Deer	Kakar	Hugori pohu	(100) I
Suidae					
28.	<i>Sus scrofa</i> Linnaeus	Wild Boar	Suar	Bonoria gahori	(520) C
Pholidota					
Manidae					
29.	<i>Manis crassicaudata</i> Gray	Indian Pangolin	Bajra Kit	Bon rowu	R
Cetacea					
Platanistidae					
30.	<i>Platanista gangetica</i> (Leback)	Gangetic Dolfin	Susu	Hiho	C

BIRDS

Sl. No.	Scientific Name, Order, Family and Genus	English Name	Hindi Name	Assamese Name	Resident status and breeding season.
1	2	3	4	5	6
	Podicipediadae				
1.	<i>Podiceps ruficollis</i> (Pallas)	Little grebe	Pandubi	Ghila hanh	Rs
	Pelecanidae				
2.	<i>Pelicanus philippensis</i> Gmelin	Grey Pelican or Spotted billed Pelican	Hawasil	Bhella or Sherra dhera	Rs
	Phalacrocoracidae				
3.	<i>Phalacrocorax carbo</i> (Linnaeus)	Large Cormorant	Ghogur, Pan-Kowwa	Doikola	Rs
4.	<i>Phalacrocorax niger</i> (Vieillot)	Small Cormorant	Pan-Kowwa, Jograbi	Panikauri	Rs
5.	<i>Anhinga rufa</i> (Daudin)	Darter or Snake bird	Panwa, Pandubi	Moniori	Rs
	Ardeidae				
6.	<i>Ardea cinerea</i> Linnaeus	Grey Heron	Nari, Kabud, Anjan	Kani boguli	Rs
7.	<i>Ardea purpurea</i> Linnaeus	Purple Heron	Nari, Lal Sain, Lal Anjan	Ajan	Rs
8.	<i>Butorides striatus</i> (Linnaeus)	Little Green Heron	Kancha bagla	Haru heuzia mushori	Rs
9.	<i>Ardeola grayii</i> (Sykes)	Paddy Bird or Pond Heron	Bagla, Andha bagla Kunch bagla	Konamushori	Rs
10.	<i>Bubulcus ibis</i> (Linnaeus)	Cattle Egret	Surkhia bagla, Gai bagla	Gorubog	Rs
11.	<i>Egretta gargetta</i> (Linnaeus)	Little Egret	Kilchia or Karchia bagla	Teberibog	Rs
12.	<i>Nycticorax nycticorax</i> (Linnaeus)	Night Heron	Waak Kwaak	Nikha boguli	Rs
13.	<i>Gorsachius melanolophus</i> (Raffles)	Malay Bittern	—	Raj bog	Rs
14.	<i>Ixobrychus chinnameus</i> (Gmelin)	Chestnut Bittern	Lal bagla	Itaguria	Rs
15.	<i>Dupetor flavicollis</i> (Latham)	Black Bittern	Kala bagla	Khoira bog	Rs
	Ciconiidae				
16.	<i>Anastomus oscitans</i> (Boddaert)	Open-billed Stork	Gungla	Hamukkhula	Rs
17.	<i>Ciconia ciconia</i> (Linnaeus)	White Stork	Laglag	Boga bortokola	M
18.	<i>Ciconia nigra</i> (Linnaeus)	Black Stork	Surmal	Kola bortokola	M
19.	<i>Ciconia episcopus</i> (Boddaert)	White-necked Stork	Laglag	Kanua	M
20.	<i>Xenorhynchus asiaticus</i> (Latham)	Black-necked Stork	Banaras, Loharjang	Telia hareng	Rs
21.	<i>Leptoptilos dubius</i> (Gmelin)	Adjutant Stork	Hargila	Bortokola, Hargila	Rs 10/12
22.	<i>Leptoptilos javanicus</i> (Horsfield)	Smaller Adjutant	Chinjara	Hamukbhanga	Rs 10/12
23.	<i>Threskiornis melanocephala</i> (Latham)	White Ibis	Munda, Safed baza	Boga akahi bog	Rs 6/3
24.	<i>Pseudibis papillosa</i> (Terminck)	Black Ibis	Kala baza	Kola akahi bog	Rs 3/10
25.	<i>Plegadis falcinellus</i> (Linnaeus)	Glossy Ibis	Kawari	Checha bog	Rs

1	2	3	4	5	6
26.	<i>Platalea leucorodia</i> Linnaeus	Spoonbill	Chamach baza	Khantia bog	Rs 7/11
	Anatidae				
27.	<i>Anser indicus</i> (Latham)	Barheaded Goose	Hans, Kareyee hans	Pakhamuria rajhans	M 4/6
28.	<i>Dendrocygna javanica</i> (Horsfield)	Lesser Whistling Teal	Seelhi, Seelkahi	Sarali hans	Rs
29.	<i>Tadorna ferruginea</i> (Pallas)	Brahminy Duck	Chakwa, Chakwi	Chakoi chokoa, Ramkong	Rs 4/6
30.	<i>Anas acuta</i> (Linnaeus)	Pintail	Sand, Seenkh Par	Telgaj	M
31.	<i>Anas crecca</i> Linnaeus	Common Teal	Chhoti murghabi	Panihans	M
32.	<i>Anas poecillorhyncha</i> Forster	Spotbill Duck	Garm pai, Gugral	Bor patihans	Rs
33.	<i>Anas platyrhynchos</i> Linnaeus	Mallard	Nilsir	Deoraj hans	M
34.	<i>Anas strepera</i> Linnaeus	Gadwall	Myla, Beykhur	Deohans	M
35.	<i>Anas querquedula</i> Linnaeus	Gargany	Chaita	Neelpakhia sarali	M
36.	<i>Anas clypeata</i> Linnaeus	Shoveller	Tidari	Khantia hans	M
36.(a)	<i>Anas penelope</i> Linnaeus	Wigeon	Peasan	Haladhia muri hans	M
37.	<i>Aythya nyroca</i> (Guldenstaedt)	White-eyed Pochard	Kurchiya	Kalimuri	M
38.	<i>Aythya fuligula</i> (Linnaeus)	Tufted Duck	Dubaru, Ablak	Bamuni hans	M
39.	<i>Nettapus coromandelianus</i> (Gmelin)	Cotton Teal	Girri, Girja	Gurguria, Chuwa Keekee hans	Rs 7/9
40.	<i>Sarkidiornis melanotos</i> (Pennant)	Comb Duck or Nukta	Nakta	Kakoiya hans	Rs 7/9
	Accipitridae				
41.	<i>Milvus migrans</i> (Boddaert)	Common pariah kite	Cheel	Cheela	Rs 9/4
42.	<i>Aquila rapax</i> (Temminck)	Tawny Eagle	Okaab, Ragar	Kuruwa	Rs 11/4
43.	<i>Gypus bengalensis</i> (Gmelin)	Indian White-backed Vulture	Gidh	Hagun	Rs 10/3
44.	<i>Torgos calvus</i> (Scopoli)	Black Vulture	Raj Gidh	Rajhagun	Rs
45.	<i>Circus macrourus</i> (S. G. Gmelin)	Pale Harrier	Dastamal, Girgitmar	Hen kopou, Rangia baj	M
46.	<i>Circus aeruginosus</i> (Linnaeus)	Marsh Harrier	Kutar, Kulessir	Baj	Rs
47.	<i>Spilornis cheela</i> (Latham)	Crested Serpent Eagle	Furj baj	Hapkata	Rs 12/3
48.	<i>Haliastur indus</i> (Boddaert)	Brahminy Kite	Brahmini Cheel or Sankar Cheel	Ganga chiloni	Rs 12/3
49.	<i>Elanus caeruleus</i> (Desfontaines)	Black-winged Kite	Kapasi	Kazla egole	M
	Phasianidae				
50.	<i>Francolinus francolinus</i> (Linnaeus)	Black Partridge	Kala Teetar	Mechenteri or Titiri	Rs 4/7
51.	<i>Francolinus gularis</i> (Terminck)	Swamp Partridge	—	Koi, Koira, Koera, Koi charai	Rs 4/7
52.	<i>Turnix tonki</i> Blyth	Button Quail	Bater	—	M
53.	<i>Lophura leucomelana</i> (Latham)	Kalij Pheasant	Kaleej, Mukera	Darik	Rs 3/6
54.	<i>Coturnix coturnix</i> (Linnaeus)	Common Quail	Bater, Bada bater	Bota charai	Rs 2/10

1	2	3	4	5	6
55.	<i>Gallus gallus</i> (Linnaeus)	Red Jungle Fowl	Jangli murgha Jangli murghi	Bon kukura	Rs 3/5
56.	<i>Polyplectron bicalcaratum</i>	Peacock Pheasant	—	Deodorik, Ulumoiria	Rs 10/11
	Gruidae				
57.	<i>Anthropoides virgo</i> (Linnaeus)	Demoiselle Crane	Jal murghi, Pani murghi	Lahoti boguli	M
	Rallidae				
58.	<i>Rallus aquaticus</i> Linnaeus	Indian Water Rail	Kaim, Kalim	Jikar	Rs
59.	<i>Gallinula chloropus</i> (Linnaeus)	Indian Moorhen	Dawak, Dahak, Dauk	Korha	Rs 6/9
60.	<i>Porphyrio porphyrio</i> (Linnaeus)	Purple Moorhen	Piho,, Pihuya	Kamcharai, Kaim	Rs 6/9
61.	<i>Fulica atra</i> Linnaeus	Indian Coot	Jalpipi	Pani Kutkut	Rs 7/8
62.	<i>Amaurornis phoenicurus</i> (Pennant)	White-breasted Waterhen	—	Dauk	Rs 6
63.	<i>Hydrophasianus chirurgus</i> (Scopoli)	Pheasant-tailed Jacana	Chhota batan	Dighalnezia dolpunga	Rs
	Jacariidae				
64.	<i>Metopidius indicus</i> (Latham)	Bronzewinged Jacana	—	Dolmura, Dolpunga	Rs
	Charadriidae				
65.	<i>Tringa totanus</i> (Linnaeus)	Common Redshank	Karkara	Rongathutia balituka	—
66.	<i>Tringa hypoleucos</i> Linnaeus	Common Sandpiper	Dasari	Balituka	M
67.	<i>Capella gallinago</i> (Linnaeus)	Fantail Snipe	Chaha	Bhurung, Khocha-Chorai	M
68.	<i>Calidris minutus</i> (Leisler)	Little Stint	Chhota Panlowwa	Chereka charai	M
69.	<i>Rostratula benghalensis</i> (Linnaeus)	Painted Snipe	Rajchaha	Bichitra snipe Khocha	Rs
	Daridae				
70.	<i>Larus ridibundus</i> Linnaeus	Blackheaded Gull	Dhomra	Rampara Kolamura panichiloni	—
71.	<i>Sterna acuticauda</i> J. E. Gray	Black-bellied Tern	Tahari, Ganga Cheel	Kolapetia panichiloni	Rs 3/5
72.	<i>Sterna aurantia</i> J. E. Gray	Indian River Tern	Do.	Panichiloni	Rs
73.	<i>Chlidonias hybrida</i> (Pallas)	Whiskered Tern	Do.	Guphia panichiloni	Rs 6/9
	Columbidae				
74.	<i>Treron phoenicoptera</i> (Latham)	Green Pigeon	Hariyal	Haitha, Haithal	Rs 3/6
75.	<i>Ducula aenea</i> (Linnaeus)	Green Imperial Pigeon	Dunkul or Bada Harial	Parghuma	Rs 3/6
76.	<i>Ducula badia</i> (Raffles)	Imperial Pigeon	—	Ghurghuri or Harua kopou	Rs
77.	<i>Streptopelia tranquebárica</i> (Hermann)	Red Turtle Dove	Seroti fakhta	Hon kopou	Rs
78.	<i>Streptopelia chinensis</i> (scopoli)	Spotted Dove	Chitroka fakhta	Mati kopou	Rs

1	2	3	4	5	6
79.	<i>Streptopelia decaocto</i> (Fridvaldszky)	Ring Dove	Dhori fakhta	Het kopou	Rs
80.	<i>Chalocophaps Indica</i> (Linn.)	Emerald Dove	—	Hil kopou	Rs 1/5
	Psittacidae				
81.	<i>Psittacula</i> (spp.)	Parakeets	Tota	Tia, Bhatu, Hook pakshi	Rs 2/9
	Cuculidae				
82.	<i>Eudynamis scolopacea</i> (Linnaeus)	Koel	Koel	Kuli	Rs 4/8
83.	<i>Cuculus micropterus</i> Gould	Indian Cuckoo	Kyphal Pakka	Keteki	Rs 3/6
84.	<i>Centropus sinensis</i> (Stephens)	Crow-Pheasant	Mahoka	Bah kukuha	Rs 2/9
	Strigidae				
85.	<i>Tyto albo</i> (Socopli)	Barn or Screech Owl	Kuraya, Buri Churi	Lakshmi phesha	Rs
86.	<i>Bubo bubo</i> (Linnaeus)	Great Horned Owl	Ghughu	Hudu	Rs
87.	<i>Glaucidium radiatum</i> (Tickell)	Jungle Owlet	Jangli Choghad	Kal phesha	Rs
88.	<i>Glaucidium brodiei</i> (Burton)	Collared Pygmy Owlet	—	Phesha (Tilika)	Rs
89.	<i>Athene brama</i> (Terminck)	Spotted Owlet	Dolloo	Phesha	Rs 11/4
	Caprimulgidae				
90.	<i>Caprimulgus asiaticus</i> Latham	Indian Little Nightjar	Chapka	Dinkona, Itakholi	Rs 2/9
	Apodidae				
91.	<i>Apus melba</i> (Linnaeus)	Alpine Swift	Badi Ababeel	Bor batahi	M/Rs 5/6
92.	<i>Apus affinis</i> (J. E. Gray)	House Swift	Ababeel, Babeela	Batahi, pheenu	Rs 2/9
93.	<i>Cypsiurus parvus</i> (Lichtenstein)	Indian Palm Swift	Tadi ababeel	Taal batahi	Rs
	Alcedinidae				
94.	<i>Ceryle rudis</i> (Linnaeus) Lesser	Lesser Pied Kingfisher	Koryala, Kilkila	Roongberong, Mashrokha	Rs 10/5
95.	<i>Alcedo atthis</i> (Linnaeus)	Common Kingfisher	Chhota Kilkila	Mashrokha	Rs 3/6
96.	<i>Pelargopsis capensis</i> (Linnaeus)	Brownheaded Storkbilled Kingfisher	Bada Kilkila	Bogulithutia mashorokha	Rs 1/7
97.	<i>Halcyon smyrnensis</i> (Linnaeus)	Whitebreasted Kingfisher	Kilkila	Bogabukua mashorokha	Rs 3/7
	Meropidae				
98.	<i>Merops leschenaulti</i> Villiot	Chestnut-headed Bee-eater	Lalsir ptinga	Itaguria mau- makhikhowa	Rs 2/5
99.	<i>Merops superciliosus</i> Linnaeus	Blue-tailed Bee-eater	—	Neelagal mau- makhikhowa	Rs
100.	<i>Merops philippinus</i> Linnaeus	Blue-cheeked Bee-eater	Bada patinga	Neelafisha mau- makhikhowa	Rs
101.	<i>Merops orientalis</i> Latham	Green Bee-eater	Patinga	Heuzia mau- makhikhowa	Rs
	Coraciidae				
102.	<i>Coracias benghalensis</i> (Linnaeus)	Blue Jay or Indian Roller	Nilkant	Fet kauri, kaw	Rs 3/7

1	2	3	4	5	6
	Upupidae				
103.	<i>Upupa epops</i> Linnaeus	Hoopoe	Hudhud	Kakoihira, gobarkhushra	Rs 2/5
	Bucerotidae				
104.	<i>Rhyticeros undulatus</i> (Shaw)	Assam wreathed Hornbill	Dhanesh	Mah-do-la	—
105.	<i>Anthracoceros malabaricus</i> (Gmelin)	Indian Pied Hornbill	Dhanesh	Tekteki, Pakoidhora	Rs 3/6
106.	<i>Buceros bicornis</i> Hadgeon	Great Pied Hornbill	Banras (Hindi Kumaon)	Raj Dhanesh or Howang	Rs
	Capitonidae				
107.	<i>Megalaima virens magnificia</i> (Baker)	Great Hill Barbet	—	Jamdakini	—
108.	<i>Megalaima zylanica</i> (Gmelin)	Green Barbet	Bada Basanta	Borheuzia hetuluka	Rs 3/6
109.	<i>Megalaima asiatica</i> Latham	Blue-throated Barbet	Bada Basant	Neeladingia hetuluka	Rs 3/6
110.	<i>Megalaima haemacephala</i> (Latham)	Coppersmith or Crimson-breasted Barbet	Chhota Basant	Rongabookia hetuluka	Rs
	Picidae				
111.	<i>Picus squamatus</i> Vigors	Scaly-bellied Green Wood-pecker	Katphora	Heuzia kathkhula	Rs 2/4
112.	<i>Dinopium benghalense</i> Lesur (Linnaeus)	Golden-backed Wood-pecker	„	Honalipithia kathkhula	Rs 3/8
113.	<i>Picoides mahrattensis</i> (Latham)	Yellow-fronted Wood-pecker	„	Barhoitoka Kathkhula Phutphutia	Rs 1/5
	Aludidae				
114.	<i>Mirafra erythroptera</i> Blyth	Redwinged Bush-Lark	Aggia	Teltupi	Rs. 4/10
	Hirundinidae				
115.	<i>Hirundo</i> spp.	Swallows	Ababil	Bharatpakshi	R
	Laniidae				
116.	<i>Lanius schach</i> Linnaeus	Rufousbacked Shrike	Mattiya lalora	Roongapithia bagha	Rs 5/7
	Oriolidae				
117.	<i>Oriolus oriolus</i> (Linnaeus)	Golden Oriole	Peelak	Honali patmodai	M
118.	<i>Oriolus xanthornus</i> (Linnaeus)	Blackheaded Oriole	Peelak	Hakhloti or patmadoi	Rs 4/9
	Dicruridae				
119.	<i>Dicrurus adsimilis</i> (Bechstein)	Black Drongo or King Crow	Bujanga	Bhujanga, Phesu	Rs 4/8
120.	<i>Dicrurus paradiseus</i> (Linnaeus)	Largs Rackett-tailed Drongo	Bhimraj	Bhimraj	Rs 3/6
	Sturnidae				
121.	<i>Sturnus malabaricus</i> (Gmelin)	Greyheaded Myna	Pawei	Het halika	Rs 3/6

1	2	3	4	5	6
122.	<i>Sturnus contra</i> Linnaeus	Pied Mayna (Indian Sterling)	Ablaki Myna	Kankuriha	Rs 5/5
123.	<i>Sturnus pagodarum</i> (Gmelin)	Brahmini or Black headed Myna	Desi Myna	Bamuni moina	Rs 3/10
124.	<i>Acridotheres tristis</i> Linnaeus	Common Myna	—	Ghar halika, halika	Rs 4/6
125.	<i>Acridotheres ginginianus</i> (Latham)	Bank Myna	Ganga Myna	Mati halika	Rs
126.	<i>Acridotheres fuscus</i> (Wagler)	Jungle Myna	Jangli Myna, Pahari Myna	Chutia halika	Rs 6/8
127.	<i>Gracula religiosa</i>	Grackle or Hill Myna	Pahari Myna	Moina, Pahari myna	Rs 3/10
128.	<i>Dendrocitta vagabunda</i> (Latham)	Tree Pie	Mahalat	Chakcheki	Rs 3/5
129.	<i>Corvus splendens</i> Vieillot	House Crow	Kowwa	Pati kauri	Rs 4/6
130.	<i>Corvus macrorhynchos</i> Wagler	Jungle Crow	Kala Kowwa, Jangli Kowwa	Dhora kauri	Rs 3/6
	Campephagidae				
131.	<i>Tephrodornis pondicerianus</i> (Gmelin)	Common Wood Shrike	Keroula	Bagh chorai	M
	Irididae				
132.	<i>Coracina novaehollandiae</i> (Gmelin)	Large Cuckoo Shrike	Kasya	Bor bagh chorai	Rs 5/10
133.	<i>Coracina melanoptera</i> (Ruppell)	Blackheaded Cuckoo Shrike	Jungli Kasya	Kuli bagh charai	Rs 3/8
134.	<i>Pericrocotus flammeus</i> (Fonster)	Scarlet Minivet	Pahari bulbul chashm	Pahari bulal	Rs 4/7
135.	<i>Aegithina tiphia</i> (Linnaeus)	Common Iora	Shaubeega	Barsat chorai shoubeegi	Rs 5/9
136.	<i>Chloropsis aurifrons</i> (Temminck)	Green Bulbul or Leaf Bird	Harewa or Sabz harewa	Pat chorai	Rs 5/8
137.	<i>Chloropsis cochinchinensis</i> (Gmelin)	Goldmantled chloropsis or Leaf Bird	Harewa	Pat chorai	Rs 4/8
	Pycnonodidae				
138.	<i>Pycnonotus cafer</i> (Linnaeus)	Redvented Bulbul	Bulbul Guldum	Phesuluka, Khopajakeri	Rs 2/5
139.	<i>Pycnonotus jocosus</i> (Linnaeus)	Red-whiskered Bulbul	Kamera bulbul or Pahari	Pahari bulbuli	Rs 2/8
140.	<i>Pycnonotus leucogenys</i> (Gray)	White-cheeked Bulbul	—	Bulbuli	Rs
	Muscicapidae				
141.	<i>Pellorneum ruficeps</i> Swainson	Spotted Babbler	—	Phutphutia chakua hatbhani	Rs 3/5
142.	<i>Pometorhinus schisticeps</i> Hodgson	Slatyheaded Scimitar Babbler	—	Dagarthutia hatbhani	Rs 12
143.	<i>Turdoides striatus</i> (Dumont)	Jungle Babbler	Satbhai	Tiri chorai, hatbhani	Rs

1	2	3	4	5	6
144. <i>Garrulax monileger</i> (Hodgson)	Neckedlaced Laughing Thrush	—		Maladhari dhapoluka	M
145. <i>Garrulax leucolophus</i> (Hardwicke)	White crested Laughing Thrush	Rauil-Kahy		Nagadhapoluka	M
146. <i>Garrulax ruficollis</i> (Jardine & Selby)	Rufousnecked Laughing Thrush	—		Dhapoluka	M
147. <i>Alcippe poioicephala</i> (Jerdon)	Quakker Babbler	—		Hat bhai	Rs 6/9
148. <i>Muscicapa tickelliae</i> (Blyth)	Redbreasted, Tickell's Blue Flycatcher	—		Finuchorai, pokdhara	Rs 3/8
149. <i>Muscicapa thalassina</i> Swainson	Verditer Flycatcher	—		Neela pokdhora	M
150. <i>Terpsiphone paradisi</i> Linnaeus	Paradise Flycatcher	Shah bulbul		Raja pokdhora	M
151. <i>Chrysomma sinensie</i> (Gmelin)	Yellow-eyed Babbler	Bara podna		Halodhia chakua hatbhani	Rs 6/9
152. <i>Cisticola juncidis</i> (Raffinesque)	Streaked Fantail Warbler	Ghaski-phutki		Phutki, Kathalgutia	Rs 6/9
153. <i>Prinia subflava</i> (Gmelin)	Plain Wren-Warbler	Aggia		Phutki	Rs 3/9
154. <i>Prinia socialis</i> Sykes	Ashy Wren-Warbler	Phutki		Kathalgutia	Rs 3/9
155. <i>Cospychus saularis</i> (Linnaeus)	Magpie Robin	Dhaiyal		Dohikotora, Deokotra	Rs 4/7
156. <i>Cospychus malabaricus</i> (Scopoli)	Shama	Shama		Shama, Kholakati	Rs 4/6
157. <i>Phoenicurus ochruros</i> (Gmelin)	Black Redstart	Thirthira		Tirthira	M
158. <i>Saxicola caprata</i> (Linnaeus)	Pied Bushchat	Kala pida		Kalapidda (H)	M
159. <i>Saxicola torquata</i> (Linnaeus)	Collard Bushchat	Knarpida		Khar pidda (H)	M
160. <i>Saxicoloides fulicata</i> (Linnaeus)	Indian Robin	Kalchuri		Erachorai	Rs 4/6
161. <i>Monticola cinclorhynchus</i> (Vigors)	Blue headed or chestnut bellied Rock-Thrush	—		Neelamura dhapoluka	M
162. <i>Monticola solitarius</i> (Linnaeus)	Blue Rock Thrush	—		Neela pahari dhapoluka	M
163. <i>Zoothera citrina</i> (Latham)	Orangeheaded Ground Thrush	—		Bogadingir dhapoluka	Rs 5/6
164. <i>Parus major</i> Linnaeus	Grey Tit	—		Bhadar koli	Rs 2/11
165. <i>Parus xanthogenys</i> Vigors	Yellowcheeked Tit	—		Khopabandha, Halodhia gola bhadarkoli	Rs 4/9
	Certhiidae				
166. <i>Certhia himalayana</i> Vigors	Himalayan Tree Creeper	—		Kath luduka	M
	Motacillidae				
167. <i>Motacilla caspica</i> (Gmelin)	Grey Wagtail	—		Balimahi	M
168. <i>Motacilla flava</i> Linnaeus	Yellow Wagtail	Pilkya		Haldhia balimahi dhupni	M
169. <i>Motacilla citreola</i> Pallas	Yellowheaded Wagtail	—		Halodhiamuria dhupni	M

1	2	3	4	5	6
170. <i>Motacilla alba</i> Linnaeus	White Wagtail	—		Boga balimahi	M
	Nectariniidae				
171. <i>Nectarinia asiatica</i> (Latham)	Purple Sunbird	Phul soongni		Maupiya	Rs 3/6
172. <i>Nectarinia zeylonica</i> (Linnaeus)	Purplerumped Sunbird	Shakar Khora		Maupiya	Rs
173. <i>Aethopyga siparaja</i> (Raffles)	Yellowbacked Sunbird	—		Maupiya	Rs
	Ploceidae				
174. <i>Passer domesticus</i> (Linnaeus)	House Sparrow	Churi		Ghanchirika	Rs
175. <i>Ploceus philippinus</i> (Linnaeus)	Baya or Common Weaver Bird	Baya, Sonchiri		Tokora chorai, Choka	Rs 3/6
176. <i>Lonchura malabarica</i> (Linnaeus)	Whitethroated munia	Charchara		Bogadingia munia	Rs
177. <i>Lonchura striata</i> (Linnaeus)	Whitebacked munia	Shakhari Munia		Bogapithia munia	Rs
177(a). <i>Lonchura punctulata</i> (Linnaeus)	Spotted munia Mannikin	Telia munia		Phutphutia	Rs 7/10
178. <i>Estrilda amandeva</i> (Linnaeus)	Red munia, Avadavat	Lal munia		Ronga munia	Rs 6/10
179. <i>Orthotomus sutorius</i> (Pennant)	Tailor Bird	Darjee		Pathiya, Tuni Tulalakri	Rs 4/9

LIST No. 3
REPTILES

1	2	3	4	5	6
	Emydosauria				
1. <i>Gavialis gangeticus</i> (Gmelin)	Gavial	Gharial		Gharial	I
	Varanidae				
2. <i>Varanus benghalensis</i> (Daudin)	Monitor Lizard	Goh		Hon guin	I
3. <i>Varanus salvator</i> (Laurenti)	Water Monitor	Jalgoh		Paniguin	I
	Elaphidae				
4. <i>Naja naja</i> (Linnaeus)	Cobra	Nag		Feti hap	C
5. <i>Ophiophagus hannah</i> (Cantor)	King Cobra	Nagraj		Chakari fetihap	I
	Boidae				
6. <i>Python molurus</i> (Linnaeus)	Python	Ajgar		Ajogor	I

FISHES

Sl. No.	Scientific Name	Common Name	Assamese Name	Hindi Name	Remarks
1	Family Clupidae <i>Gadusia chapra</i> Hamilton	Ganges Shad	Koira	Khaira	Found in rivers and beels
2	<i>Gonialosa manmina</i> Hamilton	Ganges gizzard-Shad	Koira	Khaira	-do-
3	Family Notopteridae <i>Notopterus chitala</i> Hamilton	Humped Feather back	Cheetol	Chital	Found in large rivers
4	<i>Notopterus notopterus</i> (Pallas)	Featherback	Pholui	Chital	Found in beels
5	Family Cyprinidae <i>Catla catla</i> (Hamilton)	Katla	Katol	Bhakura	Found in large beels
6	<i>Cirrhinus mrigala</i> Hamilton	Mirgal	Mrigol	Naini	Found in rivers and beels
7	<i>Cirrhinus reba</i> Hamilton	Reba	Kharbata	Raea	-do-
8	<i>Danio devario</i> Hamilton	Danio	Banspata	Banspatti	Found in rivers and beels
9	<i>Labeo bata</i> Hamilton	Bata	Bata	Bata	Found in rivers and beels
10	<i>Labeo rohita</i> Hamilton	Bata	Boga	Bata	Found in rivers and beels
11	<i>Labeo rohita</i> Hamilton	Carp	Rui	Rohu	Found in beels
12	<i>Labeo nandina</i> Hamilton	Carp	Nandi	Nandi	Found in large beels
13	<i>Oxygaster bacalia</i> (Hamilton)	Chela	Cheela	Choili	Found in rivers and beels
14	<i>Tor putitora</i> (Hamilton)	Large Barb	Mahasol	Mahaseer	Found in large rivers
15	<i>Puntius sarana</i> (Hamilton)	Olive Barb	Saralpunti	Sidhari	Found in beels
16	<i>Puntius sophore</i> (Hamilton)	Common Barb	Punti	Sidhari	-do-
17	<i>Puntius ticto</i> Hamilton	Firefin Barb	Tita Punti	Karcha Punti	-do-
18	<i>Rasbora daniconius</i> Hamilton	Rasbora	—	—	Found in rivers and beels
19	Family Siluridae <i>Ompok bimaculatus</i> Bloch	Butterfish	Fabda	Jalkapur	Found in rivers
20	<i>Ompok pabo</i> Hamilton	Butterfish	Dora Pabda	Jalkapur	-do-
21	<i>Wallago attu</i> (Schneider)	Freshwater Shark	Boali	Moi	Found in rivers and also in large beels
22	Family Bagridae <i>Mystus aor</i> (Hamilton)	Aor	Arr-Tengra	Bara Padni	Found in rivers
23	<i>Mystus cavasius</i> (Hamilton)	Dwarf Catfish	Tengra	Tengra	-do-
24	<i>Mystus vittatus</i> (Bloch)	—	—	—	—
25	Family Sisoridae <i>Bagarius bagarius</i> (Hamilton)	Bagarius	Bagha Arr	Bagh Padni	-do-
26	Family Schilbeidae <i>Entropiichthys vacha</i> (Hamilton)	Vacha	Batch	Barcha	-do-
27	<i>Clupisoma garua</i> (Hamilton)	Garua	Ghero	Garu	Found in rivers
28	Family Heteropneustidae <i>Heteropneustes fossilis</i> (Bloch)	Stinging Catfish	Singhi	Singhi	Found in beels
29	Family Clariidae <i>Clarias batrachus</i> (Linnaeus)	Catfish	Magur	Magur	Found in tanks and beels
30	Family Channidae <i>Channa gachus</i> Hamilton	Snakehead	Lata	Girai	Found in tanks and beels
31	<i>Channa punctatus</i> (Bloch)	Green Snakehead	Lata	-do-	-do-
32	Family Nandidae <i>Nandus nandus</i> (Hamilton)	Nandus	Nadosh	-do-	-do-
33	Family Gobiidae <i>Glossogobius quiris</i> (Hamilton)	Bareyed Goby	Beley	Bela	Found in rivers and beels
34	Family Anabantidae <i>Anabas testudineus</i> Bloch	Climbing Perch	Koi	Koi	Found in beels and tanks

REFERENCES

- Ali, S. 1955. *The book of Indian birds* (5th edition), Bombay.
- Ali, S. 1949. *The Indian hill birds*, Bombay.
- Ali, S. 1962. *The birds of Sikkim*, Madras.
- Ali, S. and Ripley, S. D. 1968—1973. *Handbook of birds of India and Pakistan* (vols. 1-9), London.
- Champion, H. G. and Seth, S. K. 1968. *A revised survey of the Forest Types of India*, New Delhi.
- Deoras, P. J. 1965. *Snakes of India*, New Delhi.
- Finn, F. 1929. *Sterndale's mammals of India*, Calcutta.
- Lahan, P. and Sonowal, R. N. 1973. Kaziranga Wild Life Sanctuary, Assam. *J. Bombay nat. Hist. Soc.*, 70(2).
- Ripley, S. D. 1961. *A synopsis of the birds of India and Pakistan*, Madras.