

fig. 1 : A/555, Lingual view of maxilla



fig. 2 : A/555, Buccal view of maxilla

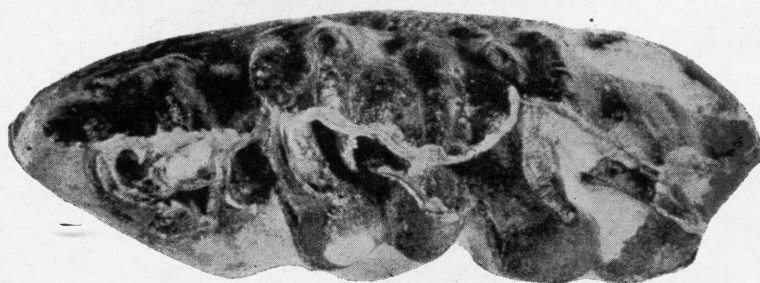


fig. 3 : A/555, Crown view of maxilla

Chilotherium intermedium (Lydekker)

(All figures approximately one-half natural size).

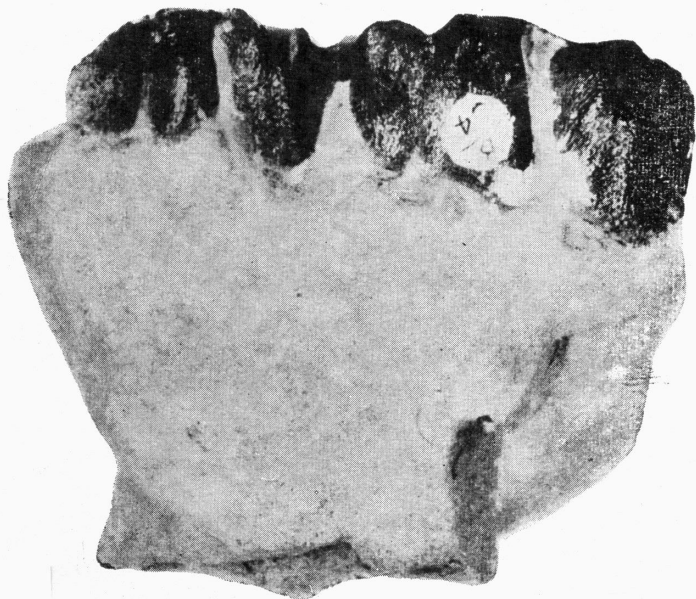


fig. 1 : B/34, Lateral view of left ramus

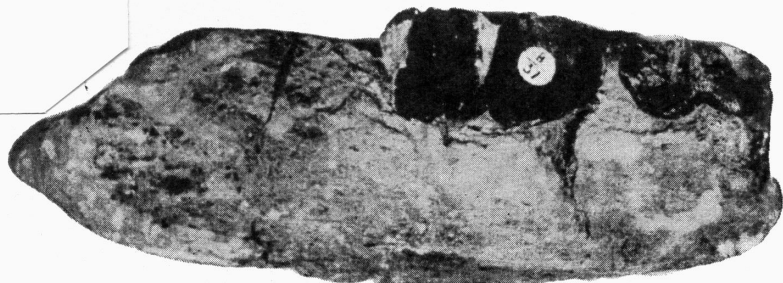


fig. 2 : B/37, Lateral view of right ramus

Chilotherium intermedium (Lydekker)
(All figures approximately natural size).

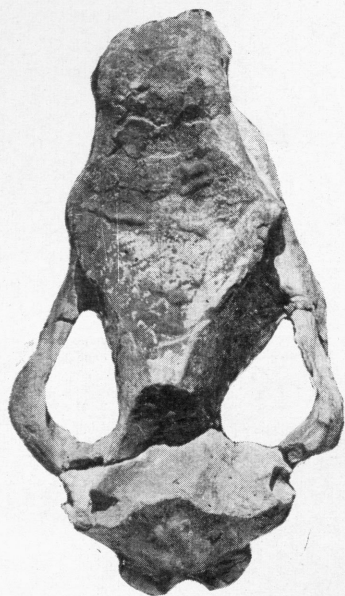


fig. 1 : A/559, Dorsal view

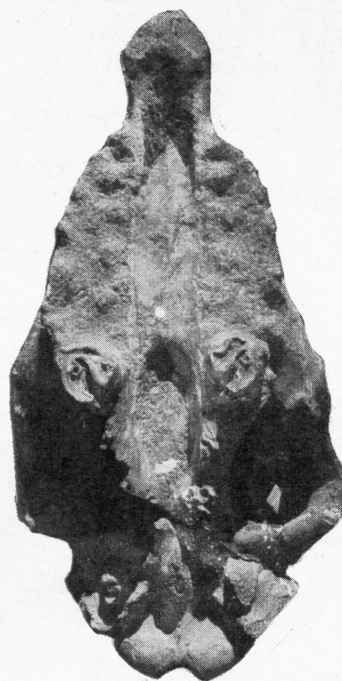


fig 2 : A/559, Ventral view

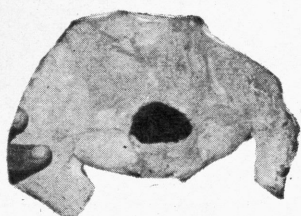


fig. 3 : A/559, Occipital view

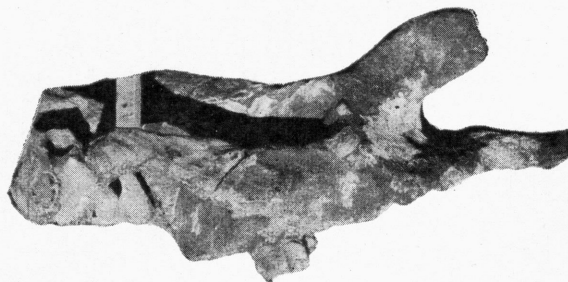


fig. 4 : A/559, Lateral view
Skull of *Punjabitherium platyrhinum*
(All figures approximately one-tenth natural size).