

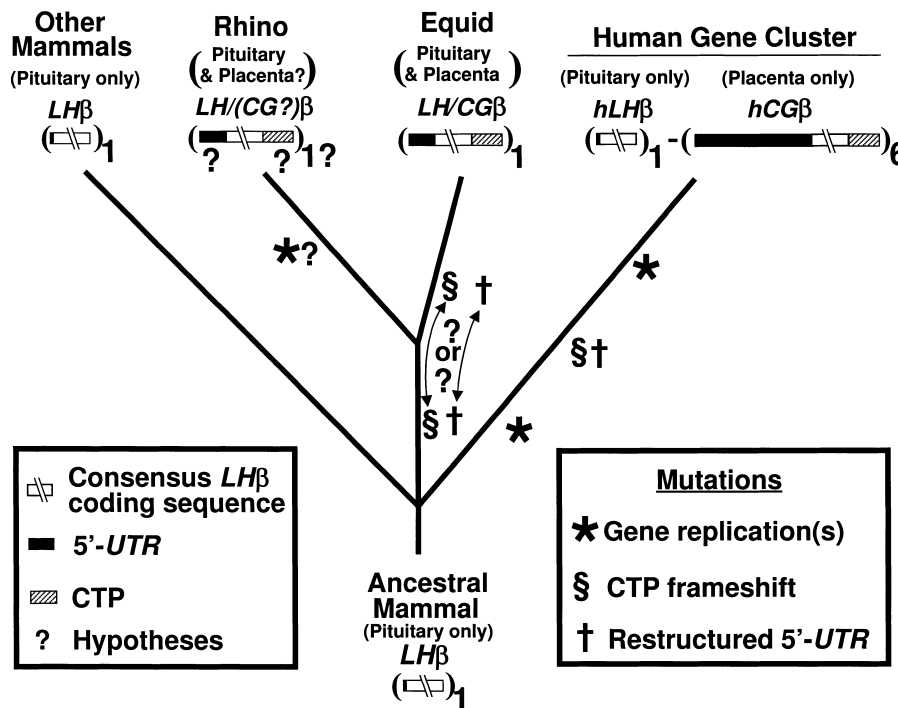
Erratum

Erratum to: ‘Characterization and phylogenetic significance of rhinoceros luteinizing beta (LH β) subunit messenger RNA structure, complementary DNA sequence and gene copy number’
[Gene 195 (1997) 131–139]¹

G.B. Sherman *, L.A. Lund, D. Bunick, R.J. Winn
Urbana, IL, USA

The publisher regrets that three figures in this article suffered a loss in quality during the printing process. They are reproduced here.

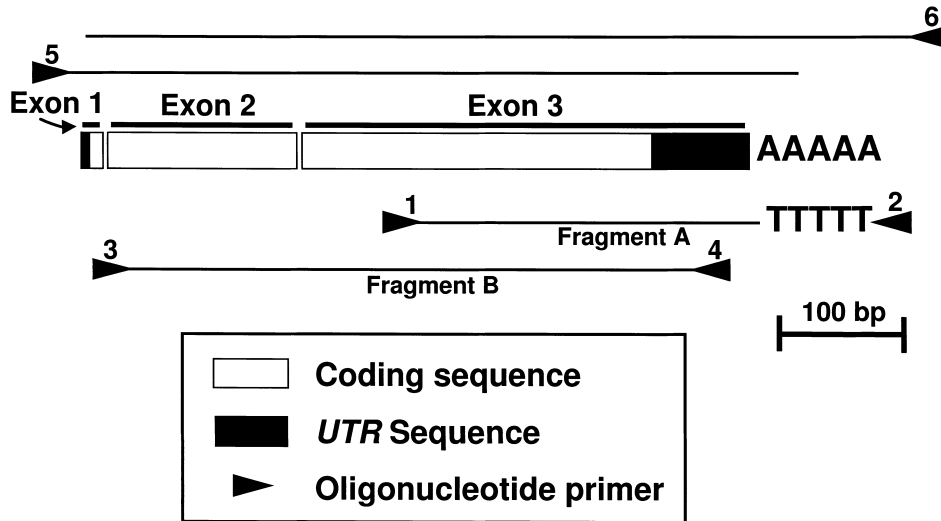
p. 133, Fig. 1.



* Corresponding author. Present address: Great Plains Veterinary Educational Center, University of Nebraska-Lincoln, P.O. Box 187, State Spur 18D, Clay Center, NE 68933, USA. Tel: +1 402 7624503; Fax: +1 402 7624509; e-mail: gsherman@unl.edu

¹ PII of original article: S0378-1119(97)00080-2.

p. 134, Fig. 2.



p. 138, Fig. 7.

