

ROWLAND WARD'S
RECORDS OF BIG GAME

XIVTH EDITION (AFRICA)



*Compiled and
Edited by*
ANTHONY A. BEST

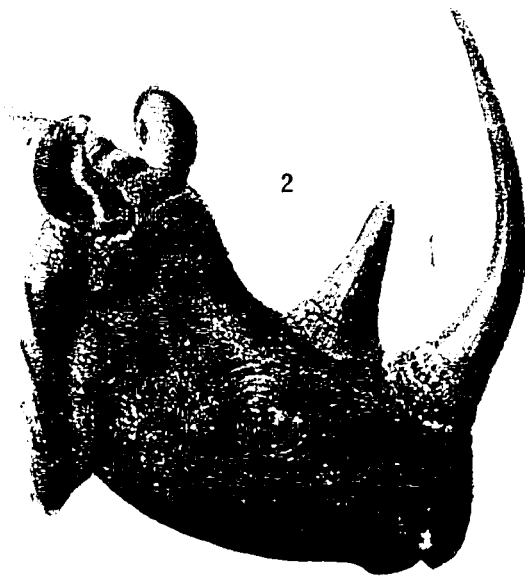
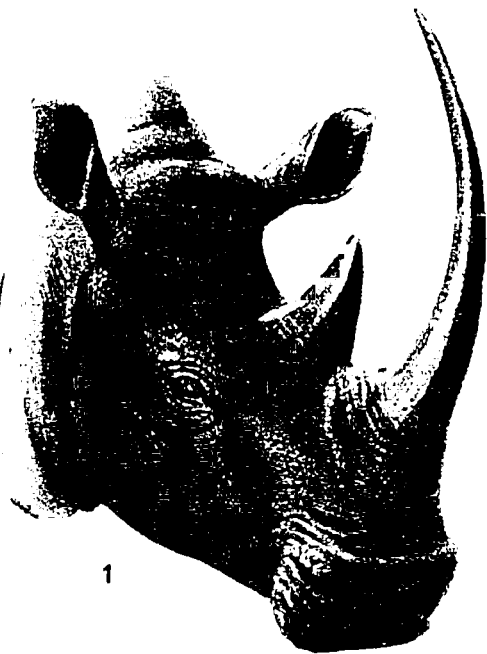
FRANÇOIS EDMOND-BLANC
*Président du Comité Français des Grandes Chasses
Administrateur Général du C.I.C.*

Representative in East Africa
MAJOR W. G. RAW

London
ROWLAND WARD (Publications) LTD.
Crawley Road, Wood Green, London, N22 6AG

Published in England by Rowland Ward (Publications) Ltd., 1971. Copyright 1971 by Rowland Ward (Publications) Ltd. Reproduction in part or in whole in any language expressly forbidden in any part of the world without written consent of Rowland Ward (Publications) Ltd.

1971



RHINOCEROS

Rhinocerotidae

This is the sole family included in this book of the zoological order Perissodactyl, which is now regarded as of equal value to the whole of the cloven-hoofed mammals. In this order, which comprises also the Horses and Tapirs, the number of toes is usually odd, being one or three, the middle one being the third digit, which is larger and in such forms as the Horses and Zebras is the sole remaining one. When extinct forms are taken into account, the difference between this foot formation and that of the cloven-hoofed animals is seen to be fundamental, the leg bones differing in a corresponding manner, whilst the teeth are also very dissimilar. The Rhinos as such all have, in the existing species, three toes on both fore and hind feet, but some extinct forms had four on the front feet. The teeth are very specialised, whilst the horns, in spite of being given that name, in fact consist of a closely compressed mass of agglutinated hairs and have no connection with the skeleton; indeed it is quite possible for a Rhino to wrench his horn off, leaving merely a skin wound.

There is no need to describe the outward appearance of a Rhino, which is well known to everyone, but his prehistoric appearance does not belie his lineage, which is extremely ancient; indeed, the whole tribe of odd-toed ungulates passed its zenith long ago, whereas the even-toed ungulates would appear, except for man's interference, to be still in a state of flourishing development.

Thousands of Rhino of both races are killed because of the belief that the horn in powdered form is an aphrodisiac. Strenuous efforts by the governments concerned have had some effect in curbing this trade.

SQUARE-MOUTHED RHINOCEROS

(Illus. p. 160)

Ceratotherium simum

White Rhinoceros; Burchell's Rhinoceros; Square-lipped Rhinoceros; Giant Rhinoceros; Great African Rhinoceros; le Rhinocéros blanc; das Stumpfnashorn or Breitmaulnashorn.

Vit Rhinaster (Afrikaans); Abu Garn and Um Girin (Arabic); Mirer (Dinka); Enkula (Luganda); Umhofo (Matabili); Chukuru (Sechuana).

This is the largest of all the Rhinoceroses and, after the two species of elephants, the largest living land mammal. The ordinary name of "White Rhinoceros", although apparently now irrevocably attached to this Rhino, is a complete misnomer, just as much as the term "Black Rhinoceros" for the commoner African species, both being in fact of an almost uniform dirty grey hue. Many speculations have been made as to how this name came to be applied, some holding that that animal looked white after emerging from a wallow in light-

then being observed while standing in bright sunlight, whilst confusion has occurred with the Afrikaans word "wyt," meaning on to the straight, square extended gape when contrasted with the hooked upper lip of the other African rhino.

Species are alike in possessing two horns, but the differences, both superiorly and inferiorly, are so deeply seated, between the two are sufficiently great to warrant a clear separation. One glance, even at a distance if a good view can be obtained, suffices to distinguish the White Rhino, which bears a massive hump at the back of the neck just at the junction with the shoulders. As the animal habitually carries its enormously long head very low, indeed often rests its chin on the ground as though the weight were too much for it, this hump is still more obvious than when it raises its head.

Apart from the square mouth there are a number of other differences between the two. The ears of the White Rhino are large, pointed, almost tubular and thickly haired, whereas those of the Black Rhino are smaller and practically naked. When a White Rhino moves off the tail is looped over the back and not carried erect as is the case with a Black Rhino. The base of the front horn is square in the White Rhino and rounded in the Black. The skin of the White Rhino is smoother and less folded; neither however possess the folds and tubercles of the Indian species which give the latter an "armour-plated" appearance.

The habits of the two species differ also; the White Rhino is entirely a grazer, to which purpose its teeth are specially adapted, and it inhabits open country, whereas the Black Rhino is mainly a browser and is normally found in fairly thick bush. Captain Pitman has pointed out that the droppings of the two differ accordingly; those of the White Rhino being black and resembling those of a horse when out at grass, whilst those of the Black Rhino can be described as a smaller form of elephant droppings. Both species deposit their droppings in middens (less noticeable in the White Rhino which has more wandering habits) and subsequently scatter them with their feet.

This Rhino is extremely placid and inoffensive in disposition, and instances of its apparently unprovoked attacks on human beings are probably due to its incomplete comprehension of the object with which it was dealing. Although its scent and hearing are good, its sight is very poor, and it seems to see indistinctly at distances of more than a few hundred yards. At the same time it is imbued with a spirit of curiosity and it lumbers forward to investigate any unusual happening.

The cows usually carry longer and more slender horns than the bulls; they may curve forwards or backwards and are frequently of extraordinary length. Their main use seems to be that of guiding the calf, preceding the mother, by pressure of the horn on the young one's hindquarters. The front surface is usually worn smooth by being pushed along the ground, the head being carried very low indeed.

The gestation period is eight and a half months and only one calf is born at a time; it is suckled for at least two years.

This animal is strictly protected.

Height at shoulder 5 feet 6 inches; weight probably about 2 tons (the weight of 3 tons suggested seems to be exaggerated).

SOUTHERN SQUARE-MOUTHED RHINOCEROS

C. simum simum

(Meas. tables p. 414)

Distribution: formerly open grassy plains between the Orange River and the Zambesi. Now extinct everywhere except in the White Rhino reserve in Zululand with a faint possibility of a few in the adjacent part of Portuguese East Africa.

The White Rhino was formerly one of the commonest beasts of South Africa, although it does not seem to have, at any rate in the present geological period, been found south of the Orange River or north of the Zambesi. It was discovered shortly before 1817 by Burchell in southern Botswana.

The early hunters and travellers frequently recorded having seen large numbers and also killed a great many. By the time Selous was in Africa, in 1877, its numbers were drastically reduced and by 1880 it was a rare animal. In 1892 and 1893 a family and two bulls were killed at a point 100 miles north-west of Salisbury; it was then considered to be extinct. The following year a small number were discovered in a remote part of Zululand. By 1903 some half dozen only remained. At this pathetically late juncture protection was provided for them. Inevitably, their slow breeding has resulted in only a limited increase in numbers; by 1912, still only 15 existed; today the population is believed to be slightly more than 1,000. At least 500 have been caught in Zululand and sent to different parks and reserves.

NORTHERN SQUARE-MOUTHED RHINOCEROS

C. simum cottoni

(Meas. tables p. 414)

Le Rhinocéros blanc du Soudan.

Distribution: west of the Nile, from Lake Albert to the Bahr-el-Ghazal; in Uganda and the Garamba National Park in the former Belgian Congo; has been reported from Western Kenya; formerly as far west as Southern Chad and the Central African Republic, where a very few specimens still exist near the Sudan border.

In 1900, when the prospects of saving the White Rhino seemed remote, great interest was taken in Captain St. J. Gibbons's discovery of another habitat, more than a thousand miles away in the Southern Sudan. It was already believed that this rhino might conceivably exist in that area, in view of two horns procured by Sir Samuel Baker.

The separation of the two races is based on a difference of the skull formation, teeth and skin. In view of the great distance separating the two it is remarkable how little they differ; the horns are indistinguishable.

BLACK RHINOCEROS

Diceros bicornis

(Meas. tables p. 415 — Illus. p. 160)

Common African Rhinoceros; Hook-lipped Rhinoceros; Ic Rhinocéros noir; das Spitznashorn or das schwarze Nashorn.

Amuku (Acholi); Zwart Rhinaster (Afrikaans); Aurarissi (Amharic); Abugern (Arabic); Mariri or Kilifori (Hausa); Amosing (Karamojong); Enkula (Luganda); Upejana (Matabili and Zulu); Muin (Masai); Munyi and Nyiee (Ndorobo); Safe Wa (Peulh); Borele and Keitloa (Sechuana); Upelepi (Sesuto); Wil (Somali); Kifaru or Faru (Swahili); Mojane (Swazi).

Distribution: formerly from Ethiopia through the eastern half of Africa to the Cape; now practically exterminated south of the Zambesi and much reduced in numbers everywhere; westwards to the Central African Republic, Chad, the Cameroons and Northern Nigeria. It had been almost exterminated in the former French territories of Africa by 1930, at which time strict protection was applied with some satisfactory results.

(Including *brucii*, *capensis*, *holmwoodi*, *keitloa*, *niger*, *occidentalis* and *somaliensis*.)

This species is the least rare of all the Rhinoceroses now living. When the head is visible it can be distinguished at a glance from the White Rhino by the triangular upper lip, the point of which is prehensile and used to strip off the twigs and leaves of the various shrubs on which it feeds, as it is, in sharp contrast to its square-mouthed cousin, almost exclusively a browser. Some of its favourite foods are the euphorbia and the acacia, and advantage is taken of its partiality for the former by the Wakamba tribe in East Africa who fell a euphorbia and then lie in wait for the Rhino.

It is a great pity that the alternative name "Hook-lipped Rhinoceros" is not the one in general use for this species as it is both distinctive and accurate. The common name "Black Rhino" is just as absurd as that of "White Rhino" for the other African form, both being in fact of an almost uniform shade of grey. Although of impressive size and weight, it does not attain the enormous bulk of the rarer animal, as is indicated by the statistics set out below.

Much variation occurs in the proportions and shape of the horns and it was thought that a forest race, distinguished by the horns being longer and thinner, existed, but these variations are now held to be individual or family differences. The rear horn is nearly always flattened from side to side and hence of dagger-like formation with cutting edges fore and aft. Occasionally the front horn projects forwards, as was the case with the much-photographed cow "Gertie." One would think that forward-pointing horns would be a great hindrance when browsing. Occasionally three horns or even four are developed. Normally, the cow's horns are slenderer than those of the bull.

Rhinos are usually solitary, a cow being often accompanied by her calf who follows her for a long time, probably as much as two years, and sometimes continues to accompany her after the next calf has been born. Small parties of three or four are also to be found.

Before the opening up of East Africa rhinos habitually inhabited open country, living mainly on the low thorn plants which grow among the grasses and being diurnal by nature; where this habitat has been disturbed by farming operations the rhinos have taken to frequenting thick bush and have acquired nocturnal habits, sleeping by day and feeding and wallowing by night. It is interesting to note that where little disturbance by humans has occurred, as in the game reserves, the rhino has retained his original mode of life and can often be seen standing in the open or browsing on a low bush.

The disposition of the Black Rhino has been much misunderstood. "Vicious and unprovoked attacks" have often been reported, whilst he is also considered harmless. These discrepancies appear to be due to two factors; firstly, because the rhino has very poor sight, a good sense of smell, a very inquisitive nature, and almost invariably moves up wind, his instinct is to investigate an unknown scent and he advances towards it at a good round trot in spite of his bulk, subsequently he can only dimly apprehend what he then sees; secondly, he has a regular path to his drinking or wallowing spots from which he will not deviate for any reason and he will scatter anything in his path. Such movements can easily be described as "unprovoked charges".

The Rhino is a great wallower and in the dry season rolls in the dust; his colour in the wild is liable to vary from whitish, reddish or blackish, according to the covering on his hide derived from the particular soil in which he happens to have bathed. The wallowing parties frequently last the whole night and are accompanied by a chorus of grunts and squeals. Another vocal performance is a Champing noise when eating. In spite of their frequent mud baths they are usually infested with parasites, and the "tick birds" (a species of starling) which are their constant companions form an association of mutual benefit, the birds obtaining a living from their host, and in exchange acting as his eyes and giving him advance warning of an approaching enemy.

Another peculiarity is that practically all rhinos bear a large sore, usually near the neck.

Height at shoulder 4 feet 9 inches to 5 feet 6 inches; weight (of a full grown bull) about 1½ to 1¾ tons.

SOUTHERN SQUARE-MOUTHED RHINOCEROS

Method of Measurement K.

(Text p. 163)

Front Horn	Rear Horn	Circumference Front	Circumference Rear	Locality	Date	Present or former Owner
62½ (158.12 cms)	22½ 56.52)	—	—	S. Africa	X	Sir W. Gordon-Cumming, Bt.
56½	23½	—	—	do	X	British Museum
40½	25	10	22	do	X	Sir W. N. McMillan
45	25	14	28	Zululand	1935	Kaffrarian Museum
44	20	—	—	S. Africa	X	British Museum
47½	24	—	—	do	X	J. W. Walker
40½	29½	—	—	do	X	Sir F. G. Loder
40½	21½	—	—	Zululand	X	The late Earl of Lovelace
40½	20½	—	—	S. Africa	X	British Museum (Rothschild)
40½	22	—	—	Mashonaland	X	K. V. Painter
37½	27½	17½	—	do	X	British Museum (Selous)
35½	26	7½	21	Mt. Domo	X	S. Africa Museum (Rhodes)
33	—	—	—	S. Africa	X	Powell-Cotton Museum
33	—	21½	—	do	—	Transvaal Museum
31½	26½	8½	26	Zululand	X	Harvard Museum (Phillips)
31½	20½	—	—	do	1959	Natal Parks Board
31½	9½	—	23	do	10/67	J. P. Tello
31	22	—	—	Mashonaland	X	J. G. Griffiths
30	20	12	17	—	1/60	Peabody Museum
(78.70 cms)	50.80 cms)	30.48 cms)	43.18 cms)			

* In captivity

NORTHERN SQUARE-MOUTHED RHINOCEROS

Method of Measurement K.

(Text p. 163)

Length Front	Length Rear	Circumference Front	Circumference Rear	Locality	Date	Present or former Owner
47½ (120.0 cms)	13½ 34.29)	—	—	Cent. Afr. Rep.	—	Paris Museum
45½	24½	—	—	Lado	X	Sir C. Spinks
43½	—	15	—	Lado Enclave	1910	S. H. Carnelley
41½	25	—	—	Mongalla	X	H. C. Brocklehurst
41	—	—	—	Sudan	1926	Sir P. Brocklehurst
41	26	11	22½	do	X	P. M. Dore
40½	26½	—	—	Cent. Afr. Rep.	—	Paris Museum
40½	25	—	—	Bahr-el-Ghazal	X	F. P. Poole
39	26½	11	25½	do	X	C. Graham
38½	11	25	—	Lado	X	British Museum (Rothschild)
38½	22½	—	—	Bahr-el-Ghazal	X	K. V. Painter
38	20	—	—	do	X	R. G. C. Brock

Length Front	Length Rear	Circumference Front	Circumference Rear	Locality	Date	Present or former Owner
38	—	—	—	Sudan	1926	Sir P. Brocklehurst
37½	22	15½	21½	Cent. Afr. Rep.	—	Musée de la France d'Outre Mer, Paris
37½	22½	—	—	do	X	British Museum (Rothschild)
37½	27	11½	26½	—	—	Tervuren Museum
37	11	21	19½	Mongalla	X	N. Cantlie
36½	27	14	18½	Lado	X	G. C. Longdon
36½	19½	—	—	S. Sudan	X	Sir B. T. Mahon
36	20	10½	18½	Lado	X	Powell-Cotton Museum
36	24½	14½	22	do	X	E. A. Temple-Perkins
35½	21	—	—	Cent. Afr. Rep.	X	R. F. Cooper
35½	27½	10½	26½	Nr. Lado	X	Sir C. Spinks
35	21½	13½	20½	Lado	X	H. Twyford
34½	22½	13	21½	Nr. Lado	X	Sir F. J. Jackson
34½	22½	9	17½	do	X	The Duke of Sutherland
*33½	—	—	—	Ajai Island	—	Uganda Game Dept
33½	22	11	20	Rhino Camp	X	H. M. the late King George VI
32½	26	12½	22	do	X	S. R. Clarke
32	21	7	16½	Lado	X	D. M'Douall
31½	22½	14	21½	Rhino Camp	X	Sir G. Archer
31½	20½	8½	19½	do	X	Lady Delamere
31½	21½	10½	19½	Uganda	X	R. G. Gillean
31	27	12	27	Lado	X	British Museum (Powell-Cotton)
30½	25½	—	—	White Nile	X	C. J. W. Hawker
30	26	—	—	Adil	3/47	Copenhagen Museum
(76.20 cms)	66.04 cms)					

* Picked up

BLACK RHINOCEROS

Method of Measurement K.

(Text p. 164)

Length Front	Length Rear	Circumference Front	Circumference Rear	Locality	Date	Present or former Owner
40	53½ (135.9 cms)	18½ 46.36)	—	Kenya	X	K. V. Painter
47½	17½	18½	18½	Tanzania	—	Game Department, Arusha
47	22	22½	20	Kenya	X	S. L. Hinde
45½	22	22	22½	Timau	7.36	R. Finch
44½	20½	20½	21½	Mt. Kenya	1952	E. T. Rundgren
44	—	—	—	Kenya	X	F. Holmwood
43½	21½	19½	20½	do	X	K. V. Painter
42½	—	21½	—	—	X	Bern Museum
43½	21½	—	—	Congo (L.)	X	British Museum (Rothschild)

Length Front	Length Rear	Circumference Front	Circumference Rear	Locality	Date	Present or former Owner	Length Front	Length Rear	Circumference Front	Circumference Rear	Locality	Date	Present or former Owner
41½	20½	10	16½	Zululand	X	Hon. W. Coke	29½	27	18½	19½	Angola	1965	P. I. do Carmo
40½	—	19½	—	S. Africa	X	Sir N. Chamberlain	29½	20	12	19	Tanzania	X	W. T. Shorthose
40½	21	18½	20	Kishanda Valley	1935	L. I. Nutt	29½	19½	13	—	Kenya	X	Count R. Hoyos
40½	32½	21½	21	Tanzania	—	Game Department, Arusha	29½	19½	—	144	Somalia	X	A. H. Straker
40	18½	14½	20½	Mt. Kenya	X	A. H. Neumann	29½	6	20½	21½	L. Birigi	11/56	E. T. Gates
39½	20½	15½	19½	—	—	C. Mapes	29½	19½	19½	16½	Angola	1965	H. C. Espinha
39	13	21½	20½	—	—	Coryndon Museum	29½	22	12½	20	—	1947	J. R. Ivy
39	19½	19½	17	Kenya	X	E. B. Horne	29½	20½	18½	16½	Angola	10/61	R. M. Lee
38½	—	20	—	—	—	Coryndon Museum	29½	20½	17	18½	Mt. Kenya	8/61	W. F. Fuller
38½	21	—	—	—	X	British Museum (Rothschild)	29½	—	16½	—	Zululand	—	Natal Parks
36½	8½	18½	14½	Malawi	1946	Kaffrarian Museum	29½	—	15	—	—	—	Transvaal Museum
36½	24½	16½	29½	Tanzania	3/67	Count A. Marone Cinzano	29½	20½	—	—	—	—	M. H. Graud
36½	24	20	25½	Mt. Kenya	8/63	J. H. Collins	29	20½	—	—	Koumbala R.	X	I. Henniker-Gotley
36½	20	12½	17	Kenya	X	Sir F. G. Loder	29	19½	15½	20	Zambia	X	A. Healy
36	16½	18½	18½	Mt. Kenya	1948	M. G. Frettejohn	29	20½	37½	23	Kenya	X	R. B. Keeling
35½	17½	—	—	Kenya	X	G. H. Riddell	29	17½	29½	18	S. Africa	X	C. H. de Bois Lambert
35½	20	19	18	—	—	Coryndon Museum	28½	14½	21½	21½	Katagwe	1930	Mrs. F. C. Blasco
35½	12	18½	15½	Tanzania	—	Game Department, Arusha	28½	16½	20½	19½	Tanzania	10/70	Prince F. of Liechtenstein
35	—	17	—	Uganda	1910	S. H. Carnelley	28½	11½	19½	18½	Mt. Kenya	2/53	J. A. de Lima
35	21	11½	20	Kenya	X	L. W. Sadleir-Jackson	28½	14½	19	18½	Pundahare	1951	S. Granger
34½	18	23½	23	Tana R.	9/60	E. Magruder	28½	12½	23½	20½	Rift Valley	11/49	W. Pribik
33½	20	16	19½	Kenya	X	T. P. Kempson	28½	18	17½	16½	Taveta	10/67	G. Prud'homme
33½	23	10½	21½	Nr. Narok	1/59	R. S. Marvin	28½	19	25½	19½	Tanzania	8/61	D. S. Schmitz
33½	25½	21½	18½	Loita Hills	10/58	S. W. May	28½	8½	20½	16½	Kibwezi	1965	M. A. Aquinaga
33	19½	22	20½	Kenya	X	A. J. A. Douglas	28½	—	18½	—	Mavinga	X	British Museum (Selous)
33	24	9½	25	Congo (L.)	X	A. H. B. Kirkwood	28½	18½	8½	—	S. Africa	X	J. I. McAndrew
33	27	16	19	—	1903	R. Meinertzhagen	28½	22½	11½	27½	Kenya	X	R. L. Stobart
32½	23½	25½	18½	Kenya	7/67	Lim 'oo Hien	28½	21½	9½	18½	do	X	F. Baden Powell
32½	10½	22	21½	Aberdare Mts.	9/57	J. Shirley	28	23½	—	—	do	X	British Museum (Selous)
32½	20	20½	19½	Kenya	X	D. Mackenzie	28	17½	7½	18½	do	1951	J. A. de Lima
32½	22	16	19	do	X	R. Meinertzhagen	28	15	18½	16½	Rovuma R.	8/67	T. K. Schier
32	21	7½	19½	Tanzania	X	A. G. Farfan	28	13½	19½	21½	Meru	11/64	H. I. H. Prince Abdorreza
32	—	21½	—	Mkuzi	1960	Natal Parks	27½	18½	17	17½	Kenya	8/60	R. Sand
31½	14½	24	20	Mt. Kenya	8/59	C. Caldesi	27½	13½	18½	19½	Athi R.	1965	F. Melazzi
31½	—	18½	—	—	—	Game Department, Nairobi	27½	19	—	—	Mavinga	1/65	O. Brooks
31½	14	18½	19½	Magadi	6/56	F. C. Hibben	27½	—	24	—	Angola	—	Coryndon Museum
31½	19½	26½	14½	Mt. Kenya	4/69	B. B. Brooks	27½	19½	21	21	—	1964	H. Roussel
21½	16½	12	16	Kenya	X	G. St. J. Orde Browne	27½	22½	13	22½	Angola	8/67	A. Conde
31½	16½	16½	18½	Tanzania	1956	Boyd Williams	27½	20	—	—	—	1/54	A. Perrot
31½	22	12	20½	Ikoma	9/48	D. Witter	27½	20	18½	18½	I. Manyara	1949	Count C. H. Seifern
31	18½	23	21	Loyoro	1958	P. A. G. Field	27½	10½	17½	19	Kenya	1954	A. de Gouvêa
31	23½	17½	23½	Kenya	X	W. Neilson	27½	17½	13½	20½	Mocimedes	1936	J. C. de Barros
30½	16½	17½	17½	Masai	X	C. B. Turnedr	27	21	12½	19½	Angola	X	A. Chapman
30½	12	20½	19½	Mbulu	8/53	B. W. O'Gara	27	27	24½	12½	Kenya	X	G. W. Criele
30½	23	12½	23	Kenya	9/48	D. Witter	27	21	12	70½	Tanzania	X	E. Gedge
30½	10½	24½	22½	Luiana R.	1963	J. Roque de Pinho	27	20½	—	—	Kenya	X	R. S. Griffin
30½	20½	13½	17½	Kenya	X	Sir G. T. M. Bridges	27	20½	11½	19½	do	X	Mrs. H. D. Hannay
30½	21½	27½	24½	Zambia	X	E. J. Dent	27	21½	12½	21½	do	1/52	E. Maurer
30½	18	22½	18½	Tanzania	X	A. G. O. Hodgson	27	13½	21½	21	Garba Tula	7/53	F. P. Williamson
30½	21½	16½	20½	Kenya	X	R. W. McKergow	27	19	15½	19	Tanzania	3/66	Duke of Penaranda
30½	18½	16½	20	Cunene R.	X	Powell-Cotton Museum	26½	8½	20½	20½	Barsoloi	1966	L. E. Tassel
30½	—	23	—	—	—	Game Department, Nairobi	26½	21½	—	11	Maralal	3/63	S. B. Saxton
30½	22	20½	23½	Loita Hills	12/61	Prince F. of Liechtenstein	26½	19	9½	16½	Mt. Kenya	3/69	A. P. da Silva
30	22½	21½	23½	Kenya	X	Hon. A. Greville	25½	25	—	9½	Macamedes	9/65	P. Sarret
30	27	15½	13½	do	X	Sir I. Northey	25½	—	21½	—	Angola	—	—
30	10½	23½	20	Aberdares	2/57	J. F. Ormond	(64.14 cms)	—	—	55.25 cms)	—	—	—

* Picked up.

* Picked up.