

THE
PROVINCIAL
TOKEN-COINAGE
OF THE
18th CENTURY

ILLUSTRATED

BY

R. DALTON & S. H. HAMER

PART IV.:

Middlesex



1912

[ENTERED AT STATIONERS' HALL.]

Middlesex.

PIDCOCK'S.

Antelope.



O. for Nos. 447-448

Nos. 447-448. O: An antelope looking to the left.
As No. 420.

447. R: An ostrich. As No. 443. A. 330
E: Milled.

447a. E: Plain (not in collar). A. 330a

Some of these are on very small flans, with a rounded edge.

448. R: An eagle. As No. 414.



O. for Nos. 449-451

Zebra.

Nos. 449-451. O: A zebra. As No. 421.



O. for Nos. 452-453

449. R: A two-headed cow. As No. 423. A. 331

450. R: A cockatoo. As No. 435. A. 332

451. R: A crane. A. 333

Similar to No. 436, no periods, and H omitted in "EXHIBITION."



O. for Nos. 454-455

Two-headed Cow.

Nos. 452-453. O: A two-headed cow. As No. 423.



455

452. R: A kangaroo. As No. 424. A. 334

453. R: The wanderow. As No. 425. A. 335

Nos. 454-455. O: A two-headed cow. As No. 422.

454. R: A toucan. As No. 426. A. 336

455. R: The Royal arms, crest, &c. LONDON & MIDDLESEX. HALFPENNY. A. 337



451

Kangaroo.

456. O: The kangaroo. As No. 424.



456

R: A cockatoo. As No. 435. A. 338

Wanderow.

Nos. 457-458. O: The wanderow. As No. 425.

457. R: A cockatoo. As No. 434. A. 339

458. R: A crane. As No. 451. A. 340



457

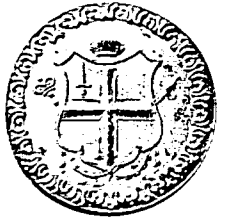
PRATTENT'S.

459. O: An anchor in a shield, between sprigs of laurel, crest a cap of Liberty radiated. LONDON COMMERCIAL TOKEN 1796.



R: The arms of London.

E: Plain. A. 341



459a. E: PAYABLE IN DUBLIN OR LONDON. A. 341a

459c. E: CAMBRIDGE BEDFORD AND HUNTINGDON.

459d. E: CURRENT EVERYWHERE.

459b. E: PAYABLE AT THE WAREHOUSE LIVERPOOL X X X

459e. E: Milled.

A. 341b

Rarity—Nos. 488, 465 in lead, 466, RRR. 459a. b, c, d, e, 461, a, b, c, d, 462, a, b, c, d, e, 463, 465a, RR. 452, 456, 457, 460, 464, R. 449, 450, 451, 453, 458, 459, 465, scarce. The others, common.

Middlesex.

PIDCOCK'S.

*Lion (lying down).*O. for
Nos. 432-435Nos. 432-435. O: A lion lying down, fondling a dog.
PIDCOCK'S * GRAND . MENAGERIE . EXETER .
CHANGE . LONDON *

434



435

432. R: A two-headed cow. As No. 423. A. 317
433. R: A kangaroo. As No. 424. A. 318
434. R: A cockatoo. ORANGE CRESTED COCK-
ATOO 1801. A. 319
435. R: A crane. THE AFRICAN CROWN CRANE
* PIDCOCK'S EXHIBITION * . A. 320

O. for Nos. 436-438

*Rhinoceros (to right).*Nos. 436-438. O: A rhinoceros looking to
the right.436. R: A tiger. As No. 418.
E: SPENCE X DEALER X IN X COINS X LONDON X . A. 321
437. R: An antelope looking to the left. As No. 420.
E: Milled. A. 322
437a. E: Plain (not in collar). A. 322a
438. R: A kangaroo. As No. 424. A. 323

O. for Nos. 439-440

Rhinoceros (to left).

Nos. 439-440. O: A rhinoceros looking to the left.

439. R: A two-headed cow. As No. 423. A. 324
440. R: A cockatoo. As No. 434.*Tiger.*

Nos. 441-443. O: A tiger. As No. 418.

441. R: A two-headed cow. As No. 422.
E: SPENCE X DEALER X IN X COINS X LONDON X A. 325
441a. E: Milled. A. 325a
442. R: An ostrich. JAMES under it. EXE-
TER CHANGE STRAND LONDON X
E: SPENCE X DEALER X IN X COINS X
LONDON X A. 326
442a. E: Milled.
443. R: Eagle, &c. As No. 415.
E: SPENCE X DEALER X IN X COINS X
LONDON X A. 326 Bis.

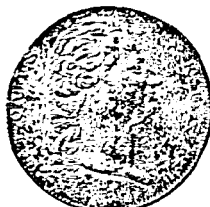
O. for Nos. 441-443



442



O. for Nos. 444-446



446

*Nylghau.*Nos. 444-446. O: A nylghau looking to
the right. As No. 419.444. R: A two-headed cow. As No. 422.
A. 327
445. R: An ostrich. As No. 443. A. 328
446. R: Bust to right. LOUIS REX. A. 329

Middlesex.

PIDCOCK'S.

Nos. 417-426. *O*: An Elephant as last.

417



419



421



423



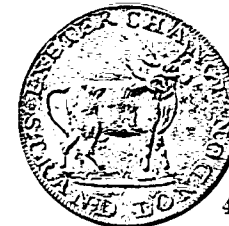
425



418



420



422



424



426

417. *R*: A rhinoceros looking to the left.
PIDCOCK EXETER CHANGE LONDON.
A. 303

418. *R*: A tiger. ROYAL MALE TIGER 1796.
E: SPENCE X DEALER X IN X COINS X
LONDON X A. 304

419. *R*: A nyghau looking to the right.
JAMES under it. * PIDCOCKS *
EXHIBITION. A. 305

420. *R*: An antelope looking to the left.
* PIDCOCK'S * EXHIBITION *
ALIVE. *Ex*: 1795.

E: Milled. A. 306

420a. *E*: Plain (not in collar). A. 306a

421. *R*: A zebra. PIDCOCK'S * GRAND
MENAGERIE . EXETER . CHANGE .
LONDON * A. 307

422. *R*: A two-headed cow. EXETER CHANGE
* STRAND LONDON * .
E: Plain. A. 308a

Struck also in tin.

423. *R*: Similar, but with + instead of stars
in legend. The ground under
the cow is also different.

E: Milled. A. 308

423a. *E*: Plain.

423a also struck in brass.

424. *R*: A kangaroo. THIS . KANGAROO'S .
BIRTH . SEP. 10 . 1800. A. 309

425. *R*: A monkey. THE WAN-DEROW . 1801
PIDCOCKS * GRAND . MENAGERIE .
EXETER . CHANGE . LONDON *
A. 310

426. *R*: A toucan. TO . THE . CURIOUS . OB-
SERVERS &c. A. 311

Lion (and dog).

Nos. 427-431. *O*: A lion with a dog upon
its back. LION AND DOG. 1801.

427. *R*: A rhinoceros to left. As No. 417.
A. 312

428. *R*: A zebra. As No. 421. A. 313

429. *R*: A two-headed cow.
A. 314

430. *R*: A kangaroo. As No. 424. A. 315

431. *R*: The wanderow. As No. 425. A. 316

O. for Nos. 427-431

Rarity—Nos. 425, 429, 433, 440, 442a, 443. RRR. 420a, 438, 441, a, 444, RR.
421, 428, 432, 437, 446, R. 422, 445, scarce. The others, common.

Middlesex.

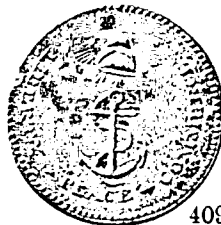
ORCHARD'S.



407



408



409



410

- Nos. 405-409. O: As No. 399.
407. R: A cypher *J E & Co.* HALF PENNY
. PAYABLE . IN . CORK . OR . DUBLIN.
A. 293
408. R: A sheaf of wheat and sickle between
two doves. A. 294
409. R: Anchor and cap of Liberty radiated.
LIBERTY . PEACE . COMMERCE. A. 295
410. O: The obverse of No. 400.
R: Figure of Fame flying. A. 296



411. R: Bust of William III. in a wreath
of oak. 1688. A. 297



412. R: A cypher *H S & Co.* between laurel
branches. A. 298



413. R: Hope holding a quadrant. FOR THE
GOOD . OF . TRADE. A. 299

Nos. 411-413. O: The reverse of No. 399.



414. O: A lion couchant, holding a shield
inscribed EXETER CHANGE LONDON.
PIDCOCK'S EXHIBITION.

R: An eagle, BIRDS . AND . BEAST . A. 300

415. O: Similar to last, but the word EXHIBITION
correctly spelt.

R: An eagle with a radiation above,
and BIRDS . AND . BEASTS . 1795.
below.E: PAYABLE IN DUBLIN OR LONDON + . +
A. 301

- 415a. E: Milled. A. 301a

- 415b. E: Plain (not in collar). A. 301b



O. for Nos. 416-426

416. O: An elephant. PIDCOCK'S * * * EXHIBITION *

R: A rhinoceros looking to the right.
EXETER * CHANGE * STRAND *
LONDON *
E: SPENCE X DEALER X IN X COINS X
LONDON X A. 302

- 416a. E: Milled. A. 302a

- 416b. E: Plain (not in collar). A. 302b

