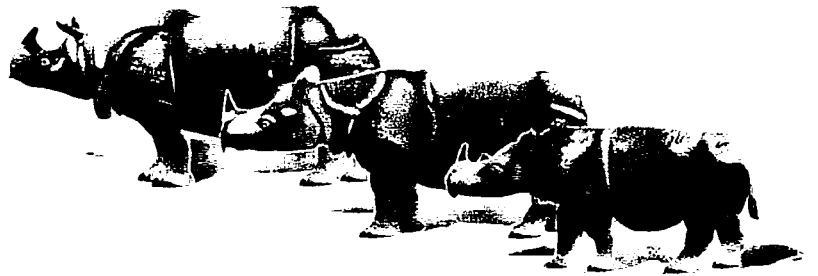


AsRSG



IUCN
The World Conservation Union



ASIAN RHINOS

Newsletter of the IUCN SSC Asian Rhino Specialist Group
NUMBER 2 October 1995

Editors: Thomas J. Foose & Nico J. van Strien

CHAIRMAN'S REPORT

CONTENTS

- Chairman's Report
- AsRSG Activities
 - GEF Project SE Asia
 - IUCN Criteria Assessment
 - Next Meeting
- Funding
 - U.S. Rhino & Tiger Act
 - UNEP Elephant & Rhino Facility
- Workshops & Reports
- Country Reports
 - Indonesia
 - Malaysia
 - Vietnam
- Captive Programs
- Sumatran Rhino Sanctuaries
 - Indonesia
 - Malaysia
- AsRSG Members List
- Population Status

The Asian Rhino Specialist Group (AsRSG) has actively continued to play its important role in the conservation of all three Asian rhino species. AsRSG secured \$ 2,000,000 over 3 years from the Global Environment Facility (GEF). These much needed funds have been immediately put into use for projects in Indonesia and Malaysia. Emphasis is on protection (anti-poaching) and outreach programs. Immediate objectives are to mobilize trained and experienced rhino personnel in the field. In Indonesia, a mobile rhino unit has been formed and recruitment and training are in progress for nine Rhino Protection Units. Surveys are being conducted in Malaysia. Vehicles and equipment have been purchased.

The United Nations Environment Program (UNEP) has conducted several meetings with the AsRSG and provided funds for the Group to conduct a meeting and a workshop to analyze and revise the action plan of range states. Accurate funding requirements of range states to implement rhino conservation projects are urgently needed by UNEP to facilitate fund raising.

The signing of a Memorandum of Understanding (MOU) between the Government of Indonesia through its Forest Protection and Nature Conservation Agency (PHPA) and the International Rhino Foundation (IRF) is yet another very important achievement in rhino conservation. It paves the way for the establishment of a Sumatran Rhino Sanctuary in the Way Kambas National Park, Sumatra. The Indonesian Ministry of Forestry, the Governor of Lampung Province, the Director General of PHPA and other key personnel are providing strong support for this initiative.

High level meetings have also been conducted with the Secretary General of the Ministry of Science, Technology, and the Environment in Malaysia. In addition to discussion of the GEF project, plans have been explored to provide external funding through the IRF to expand the rhino center at Sungai Dusun.

ASIAN RHINO SPECIALIST GROUP ACTIVITIES



GEF PROJECT ACTIVATED

The UNDP GEF Project Conservation Strategy for Rhinoceros in South East Asia (Indonesia and Malaysia) was activated in April 1995.

In **Indonesia**, the Sumatran Rhino Trust (SRT) base camp has been rehabilitated into the training and operations center for the project.

A four-member Mobile Team has been formed and deployed. The Mobile Team is led by the Regional Field Coordinator Mr. Dwi Sutantohadi, who also serves as the Mobile Team member for law enforcement. Other Mobile Team members are: Hario T. Wibisono (research & monitoring); Arief Rubianto (management & protection); Desmondh Bangun (education & extension).

To date, members for 4 Rhino Protection Units have been recruited and they have completed the first training course. Training of a second set of teams will commence after the first of the new year. The Teams are being deployed in Kerinci Seblat and Barisan Selatan National Parks. It is expected that the Mobile Unit will also be involved in training an anti-poaching team for rhinos and tigers in Way Kambas National Park where increasing evidence of a significant rhino population is being discovered.

Ir. Dwiatmo Siswomartono, PHPA Director for Nature, Flora and Fauna Conservation, serves as the Project Director. Drs. Widodo Ramono is the Project Manager and Rhino Conservation Officer for Indonesia.

Muniful Hamid is serving as the National Field Operations Consultant; Mr. Philip Wells, Dr. Nico van Strien, and Dr. Charles Santiapillai are serving as International Field Operations Consultants. The staff of Yayasan Mitra Rhino (YMR) is operating as the secretariat for the Project: Haerudin Sadjudin; Marcellus Adi; Dadan Dani Subrata.

In **Malaysia**, initial activity in the Project is concentrating on more intensive surveys of rhinos areas. Surveys have been conducted in Taman Negara, Endau Rompin, Selama, and Belum; in Sabah in Danum Valley and Tabin. Further survey work in Sarawak is also under way. Results will be reviewed at a Malaysian Rhino Population and Habitat Viability Analysis (PHVA) Workshop in November 1995 where both the GEF Project workplan and the Malaysian Rhino Conservation Strategy will be adaptively revised.

Musa bin Nordin, Director General of Wildlife and National Parks in Peninsula Malaysia is the GEF Project Director for Malaysia. Patrick Andau Mahedi serves as the Project Coordinator for Sabah; Abang Kassim bin Abang Morshidi for Sarawak. Dr. Zainal Zahari Zainuddin is the Rhino Conservation Officer and Project Manager for Peninsula Malaysia; Dr. Edwin Bosi, for Sabah; David Labang, for Sarawak. In Peninsula Malaysia, there are 4 National Field Operations Consultants who to some extent are performing many of the functions of the Mobile Team in Indonesia. These Consultants are: Abdul Kadir bin Abu Hashim; Mohd Samsudin Mohd Suri; Mohd Shariff Daim; Shahrudin bin Othman. Mr. Mohd-Tajuddin Abdullah is assisting all 3 regions of Malaysia as a Field Operations Consultant.

IUCN RED LIST CATEGORIES: Assessment of Asian Rhino Status

IUCN CRITERIA *	JAVAN RHINO		SUMATRAN RHINO			INDIAN RHINO	
	<i>Rhinoceros sondaicus sondaicus</i> JAVA	<i>Rhinoceros sondaicus annamiticus</i> VIETNAM	<i>Dicerorhinus sumatrensis sumatrensis</i> SUMATRA. MALAYSIA	<i>Dicerorhinus sumatrensis harrissoni</i> BORNEO	<i>Dicerorhinus sumatrensis lasiotis</i> MYANMAR. THAILAND	<i>Rhinoceros unicornis</i> Eastern pop. ASSAM. W BENGAL	<i>Rhinoceros unicornis</i> Western pop. NEPAL
A. Population reduction	VU	CR?	CR	CR		VU?	VU?
B. Extent of occurrence	EN	EN	EN	EN		EN	EN
C & D. Population estimate	CR	CR	CR	CR		VU	VU
E. Probability of extinction	EN?	CR?	EN?	CR?		VU?	VU?
OVERALL RATING	CR	CR	CR	CR	EX?	EN	EN

* Revised IUCN Categories and Criteria, approved by the 40th Meeting of the IUCN Council, 30 November 1994

EX = Extinct CR = Critically Endangered EN = Endangered VU = Vulnerable

ASSESSMENT OF ASIAN RHINOS BY IUCN RED LIST CRITERIA

The newly published IUCN Red List Categories have been applied to Asian rhino taxa. The results appear in the table above and indicate that of the 7 taxa maximally recognized: 1 is probably extinct, 4 are critically endangered, and 2 are endangered. In terms of the 3 species, 2 are critically endangered and 1 is endangered. Copies of the IUCN Red List Criteria are available from IUCN Headquarters.

ASIAN RHINO SPECIALIST GROUP MEETING

A full meeting of the IUCN SSC Asian Rhino Specialist Group will be conducted in Sandakan, Sabah, MALAYSIA 29 November - 1 December 1995.

Major agenda items are:

- Review of the Status of Rhino Populations in each of the Range States
 - Critical Review of the first 6 months of GEF Project for S.E. Asian Rhinos in Malaysia and Indonesia.
 - Progress on Development of Sumatran Rhino Sanctuaries in Indonesia and Malaysia.

- Reassessment of the Situation for *Rhinoceros unicornis* in India and Nepal.
- Reassessment of the Situation for *Rhinoceros sondaicus* in Indonesia and Vietnam.
- Reassessment of Rhino Situation in Myanmar, Thailand, Laos.
- Review of Rhino Horn Trade Situation
- Finalization of New IUCN/SSC AsRSG Action Plan for Asian Rhinos
- Preparation of the Comprehensive Continent-Wide Strategy for Rhino Conservation in Asia Being Requested by UNEP. As a Basis for the next item.
- Formulation of a Long-Term Funding Strategy for Asian Rhinos.
- Cross Fertilization of Monitoring and Management Techniques Between the IUCN African Rhino (AfRSG) and Asian Rhino Specialist Groups (AsRSG).

Support for this meeting is being provided by the United Nations Environment Programme (UNEP) and the U.S. Fish and Wildlife Service (USFWS) as part of the Rhinoceros and Tiger Conservation Act of the United States of America.

FUNDING EFFORTS & OPPORTUNITIES

U.S. RHINO-TIGER ACT

The U.S. Congress has appropriated \$200,000 under the Rhinoceros and Tiger Conservation Act for the U.S. Government Fiscal Year of 1996, which commences 1 October 1995. This amount represents only 2% of the maximum of \$10 million/year proposed under the Act. It is significant that even this amount was approved considering the economic austerity program being pursued in the U.S. Congress. Appropriation of funds was due in part to an eloquent plea for some support by Newt Gingrich, Speaker (i.e. head of the majority party) in the U.S. House of representatives.

The \$200,000 is to be divided between Africa and Asia. Africa will receive \$ 80,000 and these funds will be administered through the Office of Management Authority of the U.S. Fish and Wildlife Service. Asia will receive \$120,000 and will be administered by the Office of International Affairs of the U.S. Fish and Wildlife Service. Guidelines for application are being finalized.

Further information for the funds for Asia can be obtained from:

U.S. Fish and Wildlife Service
Office of International Affairs
4401 North Fairfax Drive, Suite 860
Arlington, VA 22203-1622 U.S.A.
Phone: 1/703/358-1760
Fax: 1/703/358-2849
Email: fred_bagley@mail.fws.gov

UNEP ELEPHANT-RHINO FACILITY

The UNEP Elephant and Rhino Conservation Facility is intensifying activity to assist with financial and political support of Rhino and Elephant Conservation. The Facility has already provided approximately \$30,000 to each of the four Rhino and Elephant Specialist groups of IUCN SSC. The charge to these Groups is to prepare continental strategies that UNEP can use to recruit funds and secure governmental commitment to rhino and elephant conservation. There will probably be a major meeting of rhino, elephant, and tiger range states sometime in 1996-97.

WORKSHOPS AND REPORTS

MALAYSIA RHINO PHVA WORKSHOP

A population and habitat viability assessment workshop for Malaysia rhino will be conducted in Sandakan, Sabah on 27 and 28 November 1995.

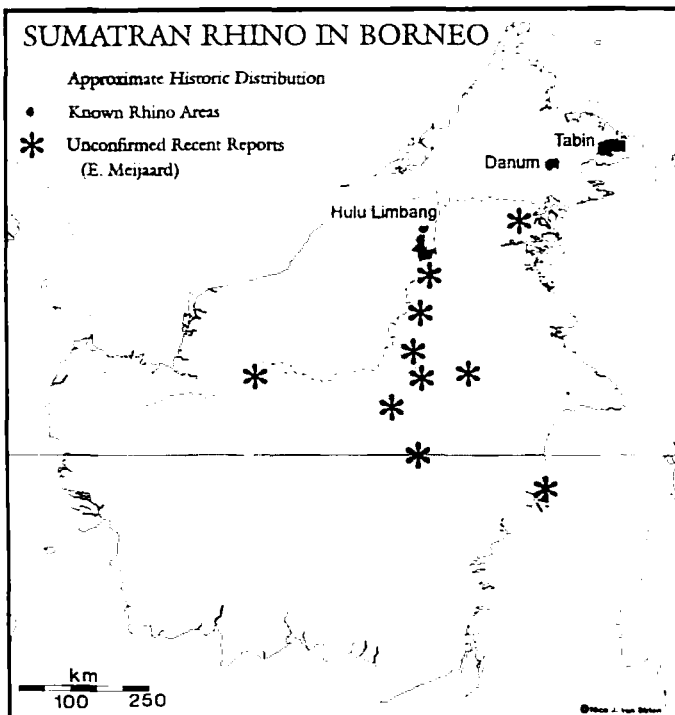
- Assemble as many as possible of persons who have information or involvement in rhino conservation and management in Malaysia.
 - Review existing information on numbers, distribution, and threats to Sumatran rhino in Malaysia.
 - Simulate probable fates of Malaysian rhino populations under various scenarios of action and non-action.
-
- Revise Malaysian Action Plan for Rhino Conservation, including formulation of quantitative and measurable objectives.
 - Assess progress on GEF Project; adjust the Malaysian GEF Project Work Plan for the next year.
 - Develop Recommendations for further action, especially:
 - Specific requests to Malaysia Government(s) (Federal and State) to increase support.
 - Drafts of proposals for other projects and donors.
 - Provide training for Malaysian wildlife biologists in application of PHVA techniques to conservation problems.

COUNTRY REPORTS

AsRSG Members in Asian Rhino range states are requested to provide reports on conservation activities and events in their countries for this column. No reports were available for this issue for India, Nepal, Myanmar, Thailand, or Laos.

INDONESIA

DISTRIBUTION SUMATRAN RHINO IN KALIMANTAN



The Bornean rhinoceros (*Dicerorhinus sumatrensis harrissoni*) is considered to be a subspecies of the two-horned Sumatran rhinoceros. Hunting and habitat loss have this sub-species on the brink of extinction. Rookmaker (1977) estimated the total number of surviving rhino in Borneo to be as low as 25 animals. Even after more detailed surveys through 1993, Yayasan Mitra Rhino (YMR) in Indonesia still estimated the total number of rhino in Sabah and Sarawak (Malaysian Borneo) to be about 85. For Kalimantan (Indonesian Borneo) only a vague estimate of "a few" surviving animals could be

provided (anonymous, 1993). This last estimate already indicates the almost total lack of knowledge of the present conservation status of rhino in Kalimantan.

In 1994, a survey was initiated to investigate the present distribution range of the Bornean orang utan (*Pongo pygmaeus pygmaeus*), which was funded by the World Wildlife Fund for Nature (WWF) in the Netherlands. This survey was conducted in cooperation with the Directorate General for Forest Protection and Nature Conservation of the Indonesian Ministry of Forestry (DG PHPA) and the MOF Tropenbos-Kalimantan Project in East-Kalimantan. As this survey was going to cover potential rhinoceros habitat in Kalimantan, it was decided to include information on recent sightings of rhinoceros in the orang utan survey. Extra funding was provided by the "van Tienhoven Stichting" in the Netherlands.

The map indicates recent rhinoceros sightings in Kalimantan. All reports are based on information from the local population and refer to the direct observation of one or several rhinoceroses, or their indirect signs, like tracks and faeces. All sightings were made between 1985 and 1995. None of these reports have been confirmed by the author. The survey will continue until the end of 1995, after which a more detailed description of the results of this survey will be presented.

References:

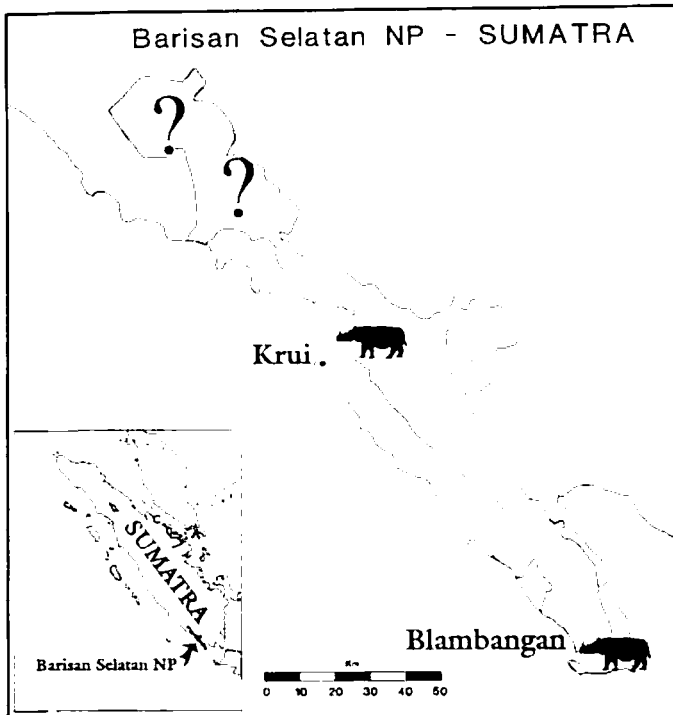
- Anonymous, 1993. Conservation strategy rhinoceros Indonesia (in Indonesian). PHPA & YMR.
- Rookmaker, L.C. 1977. The distribution and status of the Rhinoceros, *Dicerorhinus sumatrensis*, in Borneo - A Review. Bijdr. Dierk., 47(2):197-204, map 1, table 1.

Submitted by Erik Meijaard

The International MOF Tropenbos Kalimantan Project,
P.O. Box 319, 76103

Balikpapan, KalTim, Indonesia.

SUMATRAN RHINO IN BUKIT BARISAN



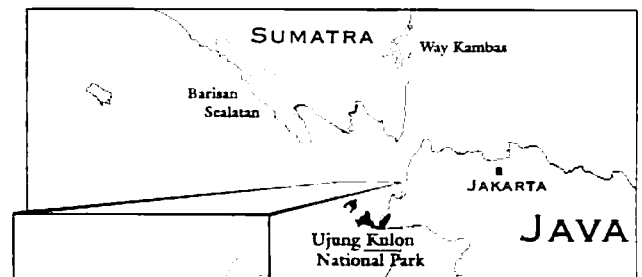
Bukit Barisan Selatan National Park, located on the southern tip of Sumatra, is the third largest protected area in Sumatra (235,000 ha) and is believed to contain one of the largest remaining populations of Sumatran rhino on the island. Although rhino surveys were conducted by Park staff in 1987 and 1990, these surveys were limited to the southern portion of the reserve near the Blambangan and Seman Rivers.

Haru, we found no sign of rhino. Additional surveys on the northern boundary of Lampung Province, near the village of Rata Agung produced no sightings. Rattan and garahu collectors active in the area claim that no rhinos have been sighted for over 10 years. In all areas surveyed, representative Sumatran mammals were sighted or signs were detected (e.g. elephant, sun bear, sambar deer, muntjac, mouse deer, pig, otter). Prints of tapir were sighted only in those areas where rhino were also detected.

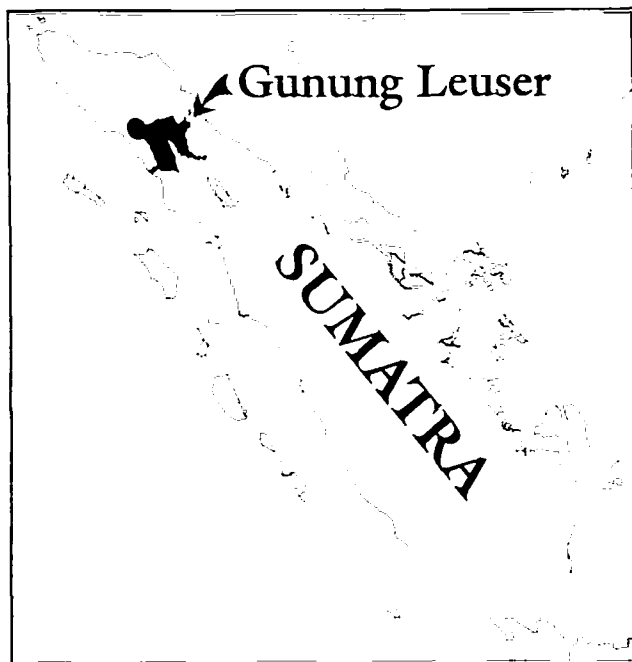
Our sightings seem to support the general impression that the southern region of Bukit Barisan Selatan N.P. provides better habitat relative to the north for Sumatran rhinos. This may be due to the swampy conditions and more open canopy of the southern forests, or better protection in the south. We believe the proposed hunting reserve in the area of highest rhino density is cause for concern. Ground surveys in Bengkulu Province are still needed.

Dr. Margaret Kinnaird & Dr. Timothy O'Brien
Associate Conservation Scientists, Wildlife Conservation Society

RHINO POACHED IN UJUNG KULON



EUROPEAN UNION GUNUNG LEUSER PROJECT: FULL STEAM AHEAD!



The European Union has approved a 32 Million ECU grant (~ US \$ 43 Million) to support a technical partnership of 7 years for conservation of the Leuser Ecosystem. The Leuser Ecosystem covers ~ 19 000 sq km of State forest land, including the current Gunung Leuser National Park (~ 9 000 sq km).

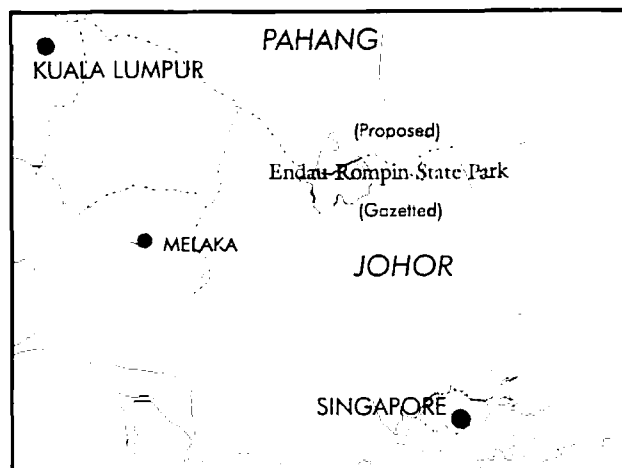
Conservation of the Leuser Ecosystem will be achieved through an Integrated Conservation and Development approach. Conditions for locally desired, ecologically sound developments will be established in a "quid pro quo" exchange of commitments, in covenants, by local communities, to support protection of the ecosystem. To facilitate the programme, a special "Conservation Concession" has been issued to the Leuser International Foundation, who delegates management to a joint Indonesian-EU Management Unit.

Currently, the EU is recruiting international staff for the Management Unit through a inter-union tender procedure. Leuser is the most important area for the Sumatran rhino. Protection of the population in the Central Leuser Rift is a high priority of the project.

Source: H.D. Rijksen, M. Griffiths.
Leuser Development Programme, Masterplan 1995.

MALAYSIA

ENDAU ROMPIN SURVEYS



In 1994 and continuing in 1995, a number of surveys have been conducted in Endau-Rompin in Pahang and Johore, Peninsula Malaysia. This area has been considered to contain one of the largest rhino populations in Peninsula Malaysia, perhaps as many as 20-25. However, there has been much disturbance in the area and delays in properly gazetted major parts of the Park on the Pahang side. Results of these surveys will be assessed further at the Malaysia Rhino PHVA Workshop, but the preliminary reports are cause for concern. Adequate protection and management of this rhino area is vital for the species.

VIETNAM

WHY THE CAT LOC (VIETNAM) RHINOS ARE JAVAN

In response to the Editor's query in *ASIAN RHINOS 1*:

- (1) Schaller et al. (1990, *ORYX*, 24:71) were "shown the horn and a piece of skin" of a rhino killed in 1988 by a Stiang hunter in Bao Loc district (west Lam Dong Prov., i.e. in Cat Loc Reserve). The skin is entirely characteristic of *Rhinoceros sondaicus*. The horn differentiates the genera *Rhinoceros* and *Dicerorhinus* well. If Schaller et al. were at all familiar with rhinoceros morphology, this would have been adequate for identification.

(2) In August, 1994, I was able to measure the partial skeleton of a rhino found dead in Lam Dong in 1978, and now displayed in a glass case in the Ministry of Forestry building, Hanoi.

(a) The skull showed the features of *Rhinoceros* as opposed to *Dicerorhinus*, for example: nuchal surface slants forward; outline of nuchal surface, in rear view, widens markedly inferiorly; dorsal outline deeply concave; subaural fusion of postglenoid and posttympanic. In addition it showed the following feature diagnostic of *R. sondaicus*: premaxillae free from maxillae

(b) The skull showed features which tend to characterize the Vietnamese subspecies *Rhinoceros sondaicus annamiticus* (Groves & Guérin (1980, *Géobios*, 13, 2:199-208):

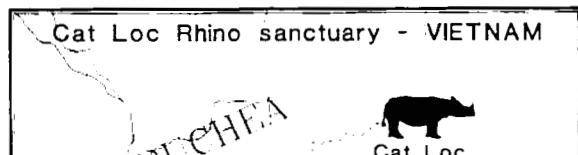
- Antorbita width 204, cf. subspecies means:

<i>annamiticus</i>	217.7	(n=3)
<i>inermis</i>	198.8	(n=5)
<i>sondaicus</i>	187.3	(n=15: Java)
	188.8	(n=5: Sumatra)

- Ratio width to height of occiput 175.6, cf.:

<i>annamiticus</i>	181.0	(n=4)
<i>inermis</i>	165.0	(n=4)
<i>sondaicus</i>	186.0	(n=16: Java)
	176.0	(n=5: Sumatra)
	171.0	(n=4: Malaya)

Unfortunately the maxillary alveolar ridge was missing, so the low facial height of *annamiticus* could not be checked.



A Comment on Haryono et al.'s Report

Schenkel & Schenkel-Hulliger assigned age/sex categories to the Ujung Kulon rhinos using Indian Rhino standards. This was of course a "faut de mieux" strategy, and I have never been entirely convinced about it. The biggest Javan rhinos would be about equivalent in size to Indian females (about 1500 kg); the fully mature Indian male weighs >2000 kg, a figure equalled among rhinos only by *Ceratotherium simum simum*. Hoogerwerf always maintained that age measurements would be a little lower; footprints of 24-25 cm would belong, according to him, to animals of 2-3 years old (whereas the Indian female Nanda in Basel Zoo, used to set the standards by the Schenkels, already had a forefoot diameter of 26 cm at 2 years, 8 months). The Cat Loc census would, if this were correct, record two full adults, and probably 1-2 subadults, plus 4-5 young. The age ration is still odd, but not quite as odd as before.

Possible explanations: (1) Haryono et al. report that 10 were poached since 1981. I'm not sure whether one could suppose that adults predominated in this total; they do not give the dates when the poaching incidents took place but, if some had been only shortly before their census in 1983, this might account for the shortage of full-sized adults. (2) The well-documented phenomenon of an expanding population breeding at younger ages than one at carrying capacity?

The Schenkels assumed that, like the Indian rhino, the Javan rhino is sexually dimorphic so that the largest footprints would be those of males. This is definitely

CAPTIVE PROGRAMS

SUMMARY - CAPTIVE PROGRAMS SUMATRAN RHINO - 1984 TO 1995

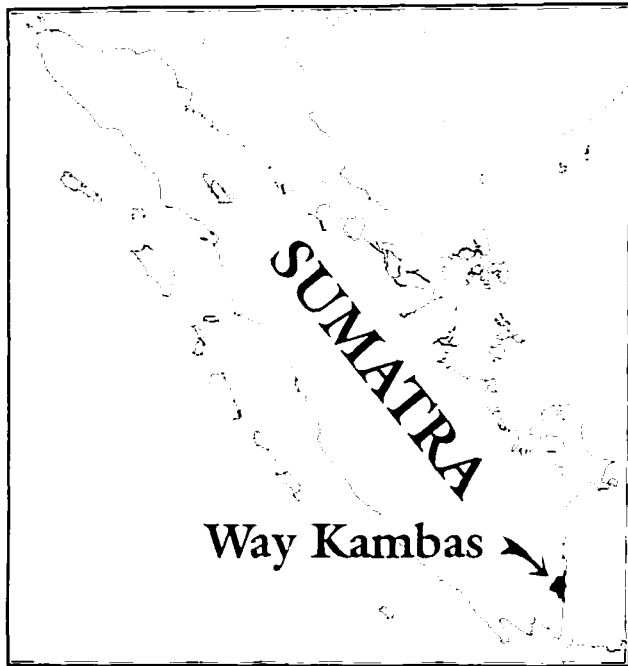
COUNTRY	CAPTURED	BORN	IMPORTED	EXPORTED	RELEASED	DIED	ALIVE
	♂/♀	♂/♀	♂/♀	♂/♀	♂/♀	♂/♀	♂/♀
P. MALAYSIA	3/9	0/1	1/0	0/2		2/2	2/6
SABAH	7/2	0/0	0/0	0/0	1/0	4/0	2/2
INDONESIA	7/11	0/0	0/1	4/7		2/2	1/3
THAILAND	0/0	0/0	0/1	0/0		0/1	0/0
U.K.	0/0	0/0	1/2	0/0		0/2	1/0
U.S.A.	0/0	0/0	2/5	0/0		1/3	1/2
TOTAL	17/22	0/1	4/9	4/9	1/0	9/10	7/13

SUMATRAN RHINOCEROS LIVING IN CAPTIVITY September 1995

COUNTRY	INSTITUTION	MALES	FEMALES	TOTAL	
Indonesia	Jakarta	0	1	1	
	Surabaya	0	1	1	
	Taman Safari	1	1	2	
	<i>Subtotal Indonesia</i>	1	3	4	
Malaysia	Peninsula	Malacca	1	2	3
		Sungai Dusun	1	4	5
	<i>Subtotal P. Malaysia</i>		2	6	8
	Sabah	Sepilok	2	2	4
		Tabin (Released)	(1)	0	(1)
<i>Subtotal Sabah</i>		2	2	4	
United Kingdom	Port Lympne	1	0	1	
	<i>Subtotal U.K.</i>		1	0	1
United States	Cincinnati	1	2	3	
	<i>Subtotal U.S.A.</i>		1	2	3
WORLD TOTAL		7	13	20	

There were a number of inaccuracies in the tables summarizing the captive programs for Sumatran rhino in the last issue of ASIAN RHINOS. The above tables provide the correct information.

SUMATRAN RHINO SANCTUARY IN WAY KAMBAS NATIONAL PARK



Progress continues on development of a managed breeding center or Sumatran Rhino Sanctuary (SRS) in Way Kambas National Park on Sumatra. A Memorandum of Understanding was signed in September 1995 by PHPA, the International Rhino Foundation (IRF), and Taman Safari Indonesia (TSI). The MOU will permit IRF and TSI to proceed immediately with construction of enclosures for the rhino and support facilities for SRS staff while the process of completing formation of the Management Company and obtaining the conservation/eco-tourism concession in the Park continues. These plans were described in the last issue of *ASIAN RHINOS*. The IRF has allocated \$ 465,000 for the SRS through the end of 1996. Another \$ 100,000 to \$ 150,000 is needed for completion of the first phase of the SRS.

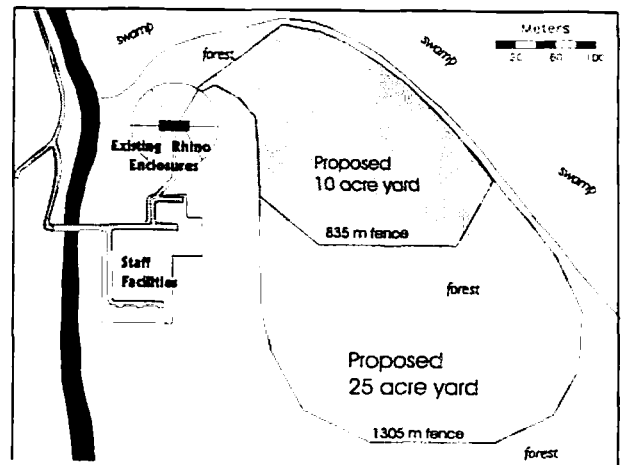
A detailed mapping of the terrain in the area where

EXPANSION OF SUNGAI DUSUN

The Rhino Conservation Center at Sungai Dusun has been the most successful in terms of survival and health of captive Sumatran Rhino. The Center is situated at the edge of natural habitat in the Sungai Dusun Wildlife Reserve. Its enclosures are relatively large compared to other facilities but probably need to be still larger.

Scientists who have studied this species in both the wild and captivity believe that the lack of reproduction may be due to the size and complexity of the enclosures provided for the rhino. Normally Sumatran rhinos are very solitary in the wild. Males and females only associate when the males detect that the females are in estrus, probably through scent. Courtship is very violent and in the confines of captivity can be very injurious or even fatal to rhino.

For a number of years the Department of Wild Life and National Parks (DWLNP) has had plans to expand the enclosures into the forest. One or two enclosures of 10 hectares (25 acres) were envisioned. In fact, there had been an allocation for this purpose in the 6th Plan but the funds were ultimately reallocated.



While not as large as the 10 hectare optimally planned, an enclosure of this size should significantly enhance the probability that animals will breed. Moreover, the 10 acre enclosure can be easily expanded into larger ones when hopefully funds are available in the 7th Plan.

This contribution represents two matching grants: one facilitated by Dr. Nan Schaffer from a Mr. Herschel Reid who lives in Texas; the other from IRF core funds provided by the Howard Gilman Foundation through White Oak Conservation Center.

WHAT IS WRONG WITH THE CAPTIVE POPULATION OF SUMATRAN RHINOS?

I have seen the facilities for the Sumatran rhinos in Jakarta, San Diego and Melaka. Those in Melaka are the best. but I would like to make a comment which applies even to this one: too much sunlight.

Recently Julian O'Dea, a Visiting Fellow in the Division of Archaeology and Natural History, A.N.U., made UV-B measurements in North Queensland rainforests, and compared them with those made in the open nearby. The results are dramatic, and unanticipated:

Time	Outside conditions	microWatts per cm ² :	
		outside	inside
11-1	strong sunlight	189-245	0-4
11-2	fairly overcast	68-156	0-5
			(6 in a small clearing)
4pm	overcast, rain	30	0
9am	clear sky	70	0-5
-	winter in Canberra	80	0-4

This means that Sumatran rhinos - in fact, any terrestrial rainforest animal - will get far too much UV radiation if kept even partly in the open.

The prevalence of cataracts in the captive stock supports this conclusion.

I speculate that, in addition to this, they will be too hot and, especially, too dry outside the humid rainforest microclimate.

I stress that all three zoos have obviously been concerned to keep their rhinos in the best possible conditions. These observations are offered in that spirit.

Submitted by Colin Groves

ASIAN RHINO SPECIALIST GROUP (AsRSG) MEMBERS

1 October 1995

REQUEST TO ALL MEMBERS

*Please review the information for your entry on this list and advise the editors of any corrections.
A number of telephone and facsimile numbers are particularly needed. E-mail addresses would be useful.
Thank you.*

Mr. Mohd Khan, *Chair*
No. 10, Jalan Bomoh
off Jalan Keramat Hujung
56100 Kuala Lumpur
MALAYSIA
tel: 60/3/4570721
fax: 60/3/4570721

Mr. S.C. Dey, *Deputy Chair*
I.F.S., Addl. I.G. (Wild Life),
Govt. of India
Ministry of Environment and Forests
Paryavaran Bhavan
C.G.O. Complex, Lodi Road
New Delhi 110 003
INDIA
tel: 91/11/469-2222
fax: 91/11/436-2222

Drs. Effendy A. Sumardja, *Deputy Chair*
Assistant Director, Ministry of Environment
c/o YMR
15 Jalan Ir. H. Juanda
Bogor
INDONESIA
tel: 62/21/3846259 or 62/251/241507 (Home)
fax: 62/21/3846259 or 62/251/360737 (YMR)

Dr. Thomas J. Foose, *Program Officer*
International Rhino Foundation
c/o The Wilds
14000 International Road
Cumberland OH 43732
USA
tel: 1/614/638-2286
fax: 1/614/638-2287

Dr. Nico J. van Strien, *Program Officer*
Julianaweg 2
3941 DM Doorn
NETHERLANDS
tel: 31/343/413642
fax: 31/343/413642

Mr. P. Lahan,
I.F.S., Conservator of Forests, Wildlife
Government of Assam
Dispur Supermarket Area
Ushanagar, Chitralekha Lane
Guwahati, Assam 781 006
INDIA
tel: 91/361/564453
fax:

Mr. R.N. Hazarika
Chief Wild Life Warden
Assam Forest Department
Rehabari
Guwahati, Assam 781 008
INDIA
tel: 91/361/541319 (O) - 561544 (H)
fax: 91/361/547386

Mr. Sen Subhendu Kumar
Director
Kaziranga National Park
Assam Forest Department
Bokakhat Dist. Golaghat Assam
INDIA
tel:
fax: 91/361/547386

Mr. S. Roy
Chief Wildlife Warden, West Bengal
Wildlife Circle Forest Department
3rd Floor,
Bikash Bhavan, North Block
Salt Lake City, Calcutta, 700091, W. Bengal
INDIA
tel: 91/33/34-6700 or 34-6900
fax: 91/33/34-5946

Dr. R. Sukumar
Deputy Chairman
IUCN/SSC Asian Elephant Spclst Grp
Centre for Ecological Sciences
Indian Institute of Science
Bangalore 560 012
INDIA
tel: 91/80/3340985
fax: 91/80/3341685

Dr. M.K. Ranjitsinh
Council for Advancement of People's
Action and Rural Technology
India Habitat Center, Zone-V, 2nd Flr.
Lodhi Road, New Delhi 110 003
INDIA
tel: 91/11/4642390
fax:

Mr. Sanjoy Deb Roy
A16, Shalimar Apts.
South Extension, Plaza II
209 Masjid Moth
New Delhi 110 049
INDIA
tel: 91/11.3016261
fax: 91/11/3019457

Dr. Uday Raj Sharma
Director General
Dept. of Natl Parks & Wildf Conservtn.
G.P.O. Box 860
Babar Mahal, Kathmandu
NEPAL
tel: 977/1/220850
fax: 977/1/227675

Mr. Shyam Sundah Bajimaya
Conservation Officer
Dept. of Natl Parks & Wildf Conservtn.
G.P.O. Box 860
Babar Mahal, Kathmandu
NEPAL
tel: 977/1/220850 or 220912
fax: 977/1/227675

Dr. Pralad Yonzon
Team Leader
Resources Nepal
GPO Box 2448
Kathmandu
NEPAL
tel: 977/1/523002
fax: 977/1/412338

Mr. U. Uga
 Assistant Director
 Wildlife and Sanctuaries Division
 Forest Department, Ministry of Forestry
 West Gyogon, Insein Yangon
 MYANMAR (BURMA)
 tel: 95/01/64457
 fax: 95/01/92739

Mr. Manop Lauprasert
 Chief, CITES Unit
 Wildlife Conservation Division
 Royal Forest Department
 Jatujak, Bangkok 10900
 THAILAND
 tel: 66/2/5614838
 fax: 66/2/5614838

Mr. Bounthong Xaisida
 Directorate Wildlife & Fisheries
 Conservation, Dept. of Forestry
 P.O. Box 2932
 Vientiane
 LAOS
 tel: 856/21/5920
 fax:

Mr. Venevongphet
 Director Forest Resource Conservation
 Wildlife & Fishery Conservation
 P.O. Box 2932
 Vientiane
 LAOS
 tel: 856/21/5920
 fax: 856/21/3807

Prof. Vo Quy
 Director, Center for Natural Resources
 University of Hanoi
 19 Le Thanh Tong Str.
 Hanoi
 VIETNAM
 tel: 84/4/253-506
 fax: 84/4/262-932

Drs. Widodo Sukohadi Ramono
 Indonesia Rhino Conservation Officer
 PHPA, Gd. Manggala Wanabakti
 Jalan Gatot Subroto
 Jakarta 10270
 INDONESIA
 tel: 62/21/580-3313
 fax: 62/21/572-0229

Ir. Dwiatmo Siswomartono
 PHPA Director Nature, Flora Fauna
 Gd. Manggala Wanabakti
 Jalan Gatot Subroto
 Jakarta 10270
 INDONESIA
 tel: 62/21/573-0313
 fax: 62/21/572-0229

Drs. Haerudin R. Sadjudin
 Program Officer
 Yayasan Mitra Rhino
 Jl. Ir. Haji Juanda 15
 Bogor
 INDONESIA
 tel: 62/251/360-737
 fax: 62/251/360-737 or 313-985

Mr. Marcellus Adi
 Deputy Program Officer
 Yayasan Mitra Rhino
 Jl. Ir. Haji Juanda 15
 Bogor
 INDONESIA
 tel: 62/251/360-737
 fax: 62/251/360-737 or 313-985

Mr. Sukianto Lusli
 WWF Indonesia
 Jl. Pela 3
 Gandaria Utara
 Jakarta Selatan
 INDONESIA
 tel: 62/21/7203095
 fax: 62/21/7395907

Mr Jansen Manansang
 Director
 Taman Safari Indonesia
 Jalan Raya Puncak
 Cisarua, Bogor
 INDONESIA
 tel: 62/251/253-220 or 000
 fax: 62/251/253-555 or 225

Dr. Charles Santiapillai
 Dept. of Zoology
 U. of Peradeniya
 Peradeniya
 SRI LANKA
 tel:
 fax: 94/8/32343

Mr. Musa bin Nordin
 Dept. Wildlife and National Parks
 KM10, Jalan Cheras
 Kuala Lumpur 50664
 MALAYSIA
 tel: 60/3/905-2872
 fax: 60/3/905-2873

Mr. Jasmi bin Abdul
 Dept. Wildlife and National Parks
 KM10, Jalan Cheras
 Kuala Lumpur 50664
 MALAYSIA
 tel: 60/3/905-2872
 fax: 60/3/905-2873

Dr. Zainal-Zahari Zainuddin
 Zoo Melaka
 Air Keroh
 75450 Melaka
 MALAYSIA
 tel: 60/6/324-053
 fax: 60/6/325-859

Mr. Patrick Mahedi Andau
 Director
 Wildlife Department, Sabah
 7th Floor, Sabah Bank Tower
 Wisma Tun Fuad
 88300 Kota Kinabalu,
 Sabah, MALAYSIA
 tel: 60/88/239423
 fax: 60/88/222476

Mr. Abang Kassim bin Abang Morshidi
 Deputy Director of Forest
 Forestry Department
 Wisma Sumber Alam
 Petra Jaya
 Kuching, 93050
 Sarawak, MALAYSIA
 tel: 60/82/442180
 fax: 60/82/441377

Laurentius Ambu
 Assistant Director
 Wildlife Department, Sabah
 7th Floor, Sabah Bank Tower
 Wisma Tun Fuad
 88300 Kota Kinabalu,
 Sabah, MALAYSIA
 tel: 60/88/239423
 fax: 60/88/222476

Dr. Edwin Bosi
Sepilok Wildlife Reserve
W.D.T. 200
90009 Sandakan
Sabah,
MALAYSIA
tel: 60\89\531-180 or \11\810-221
fax: 60\89\531-189

Prof. Dr. R. Schenkel, Retired Chairman
Nadelberg 29
4051 Basel
SWITZERLAND
tel: 41/61/2615470
fax:

Dr. Eric Dinerstein
WWF
1250 24th Street NW
Washington DC 20037
USA
tel: 1/202/778/9616
fax: 1/202/223/6971

Mr. Richard Emslie
Scientific Officer
IUCN SSC African Rhino Spclst Grp
c/o Natal Parks Board
P.O. Box 662
Pietermaritzburg 3200
SOUTH AFRICA
tel: 27/331/471-961
fax: 27/331/473-278

Mr. Mohd Tajuddin bin Abdullah
Universiti Malaysia Sarawak
Fakulti Sains Dan Teknologi
Jalan Dato Mohamad Musa
94300 Kota Samarahan
Sarawak, MALAYSIA
tel: 60/82/671000, extn 269
fax: 60/82/671123

Dr. Andrew Laurie
Department of Zoology
University of Cambridge
Downing Street
Cambridge CB2 3EJ
UNITED KINGDOM
tel: 44/223/336673
fax: 44/223/336676

Mr. Michael Dee
SSP Coordinator Indian/Nepalese Rhino
Los Angeles Zoo, 5333 Zoo Drive
Los Angeles, CA 90027
USA
tel: 1/213/6664650
fax: 1/213/6629786

Dr. Colin Groves
Reader in Biological Anthropology
The Australian National University
Canberra ACT 0200
AUSTRALIA
tel: 61/6/249/5111
fax: 61/6/249/5571

Dr. Esmond Bradley Martin
Consultant
WWF
Box 15510
Nairobi
KENYA
tel: 254/2/891185
fax: 254/2/332878

Dr. Hemanta Raj Mishra
Tech. Div., Asia Region (ASTEN),
The World Bank
1818 H. Street
Washington, DC 20433
USA
fax: 1/202/477-7335

Mr. Philip Wells
GEF Rhino Project
Yayasan Mitra Rhino
Jl. Ir. Haji Juanda 15
Bogor
INDONESIA
tel: 62/251/360-737
fax: 62/251/313-985

Dr. John Sale
Fach Gynan
Moelfre
Oswestry SY10 7 QP
UNITED KINGDOM
tel/fax: 44/1691/791404

Table 1: POPULATION & DISTRIBUTION FIGURES FOR ALL RHINO SPECIES

	Indian	Javan	Sumatran	
INDIA - TOTAL	1320 - 1585			1320 - 1585
- Kaziranga	1030 - 1298			
- Orang	90+			
- Manas	60?			
- Pobitora	56			
- Jaldapara	33+			
NEPAL - TOTAL	486 - 506			486 - 506
- Royal Chitwan	446 - 466			
- Royal Bardia	40+			
INDONESIA - TOTAL		50	235 - 320	285 - 470
- Ujung Kulon		50		
- Gunung Leuser			90 - 120	
- Kerinci-Seblat			64 - 77	
- Barisan Selatan			25 - 60	
PENINSULA			135 - 200	135 - 200
- Taman Negara			22 - 36	
- Endau Rompin			20 - 25	
- Selama			10 - 15	
- Belum			10+	
SABAH	Tabin, Danum		48-68	48 - 68
SARAWAK	Limbang		10?	?
VIETNAM		< 20	?	?
LAOS			?	?
THAILAND			10 (?)	
MYANMAR			10 (?)	
TOTAL ASIAN WILD	1806 - 2091	< 70	418 - 588	2294 - 2849
Captive - Range States	43	0	16	
Captive - Outside Range	91	0	4	
Total Asian Captive	134	0	20	154
TOTAL ASIAN	1932 - 2217	< 70	413 - 563	2448 - 3003
		Wild	Captive	Total
Black Rhino - <i>Diceros bicornis</i>		2,550	210	2760
White Rhino - <i>Ceratotherium simum</i>		6,784	640	7424
TOTAL AFRICAN RHINO				10184
TOTAL ALL RHINO SPECIES				12632 - 13187